

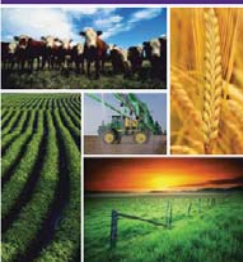
GENERAL SESSION III
Livestock Outlook

Glynn Tonsor, Kansas State University

Glynn T. Tonsor joined the Dept. of Agricultural Economics at Kansas State University in March 2010 as an Assistant Professor. He obtained his Ph.D. from KSU in 2006 and was an Assistant Professor in the Dept. of Agricultural, Food, and Resource Economics at Michigan State University from May 2006 to March 2010. Glynn's current efforts are primarily devoted to a range of integrated research and extension activities with particular focus on the cattle/beef and swine/pork industries. He has broad interests and experiences which span issues throughout the meat supply chain. Through both applied research and first-hand knowledge with livestock production, Glynn has expertise in topics including animal identification and traceability, animal welfare and handling, food safety, and price risk management and analysis.

Abstract/Summary

The combination of the 2012 drought and pre-existing structural adjustments are significantly influencing the U.S. cattle industry. This session will provide a situational summary and overview of "big picture factors" which will notably influence profitability in coming months and year for the U.S. cattle industry.



Hosted by K-State Agricultural Economics
August 16-17, 2012
K-State Alumni Center
1720 Alumni Center | Manhattan, KS



Beef/Cattle Industry Outlook Overview, Drought Impacts, Structural Changes, OH MY...

Glynn Tonsor
Dept. of Agricultural Economics
Kansas State University

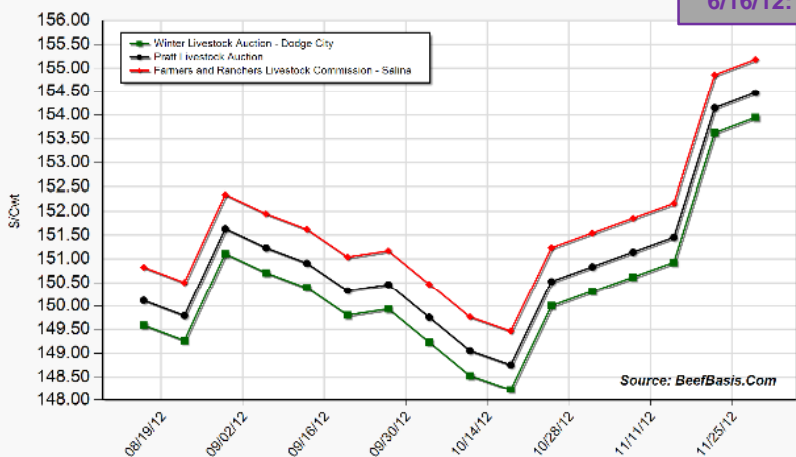
Economic Outlook Overview: Cow-Calf Sector

- Strong calf price pullback
 - National vs. regional drought magnified cattle market impact compared to 2011
- *Eventually*: return as beneficiary of tight supplies and probable expanded heifer retention...
- Returns over cash costs
 - 2012 estimates have fell \$100/cow in last 2 months
 - Will 2015 now be “the peak return year” ???
 - Widening between top 1/3 and bottom 1/3 of producers?
 - Cost management critical; even more so in period of drought response....

As of: 8/16/12

August FC:
8/16/12: \$141
7/16/12: \$134
6/16/12: \$154

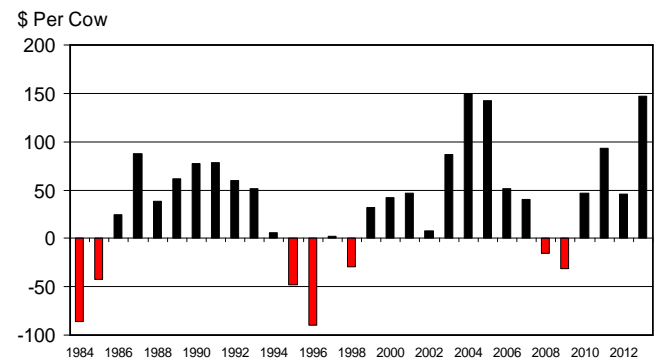
Projected Price for 550 Lb Steer at Selected Kansas Auctions



Source: BeefBasis.Com



ESTIMATED AVERAGE COW CALF RETURNS Returns Over Cash Cost (Includes Pasture Rent), Annual

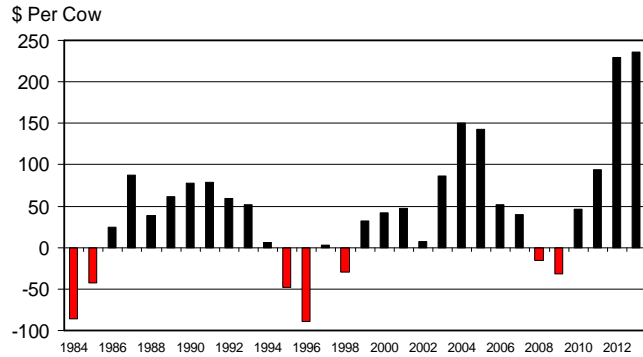


Livestock Marketing Information Center
Data Source: USDA-AMS & USDA-NASS, Compiled & Analysis by LMIC

C-P-66
08/09/12

ESTIMATED AVERAGE COW CALF RETURNS

Returns Over Cash Cost (Includes Pasture Rent), Annual

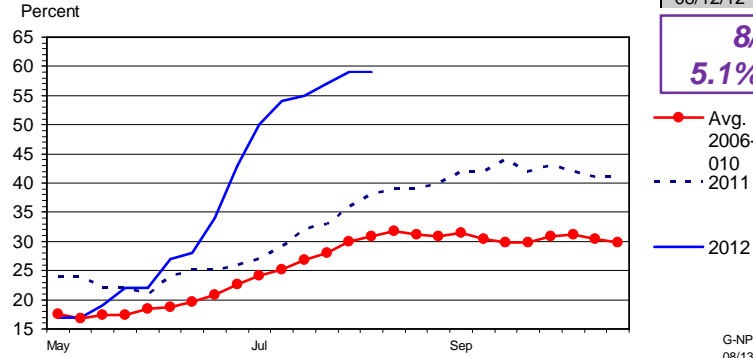


Livestock Marketing Information Center
Data Source: USDA-AMS & USDA-NASS, Compiled & Analysis by LMIC

C-P-66
03/21/12

US RANGE AND PASTURE CONDITION

Percent Poor and Very Poor, Weekly



Livestock Marketing Information Center
Data Source: USDA-NASS, Compiled & Analysis by LMIC

Beef Cows in states with 40% Poor to Very Poor		
Last year	Cows % of Total	
07/31/11	12363	40.18%
08/07/11	12865	41.82%
08/14/11	13596	44.19%
This Year		
07/29/12	22809	76.54%
08/05/12	22731	76.28%
08/12/12	23030	77.28%

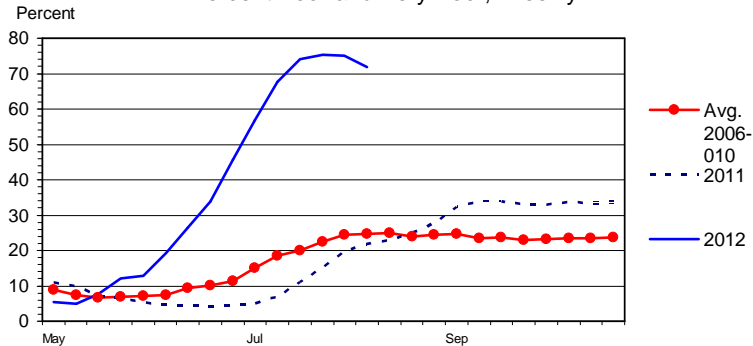
8/15/10:
5.1% of Cows

G-NP-30
08/13/12

IL, IN, IA, MI, MN,
MO, OH, & WI
14.5% of Cows
(2012)

CORNBELT REGION RANGE AND PASTURE CONDITION

Percent Poor and Very Poor, Weekly



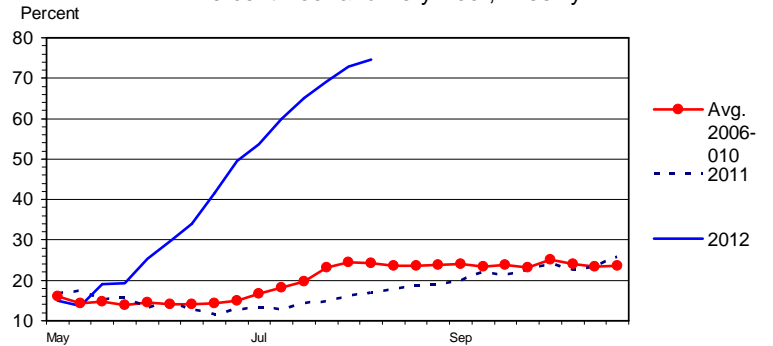
Livestock Marketing Information Center
Data Source: USDA-NASS, Compiled & Analysis by LMIC

G-NP-34
08/13/12

CO, KS, MT, NE, ND,
SD, & WY
29.2% of Cows
(2012)

GREAT PLAINS REGION RANGE AND PASTURE CONDITION

Percent Poor and Very Poor, Weekly



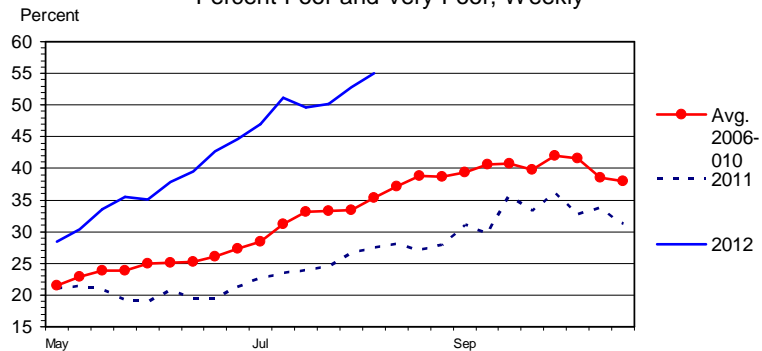
Livestock Marketing Information Center
Data Source: USDA-NASS, Compiled & Analysis by LMIC

G-NP-32
08/13/12

AZ, CA, ID, NV, NM,
OR, UT, & WA
10.2% of Cows
(2012)

WESTERN REGION RANGE AND PASTURE CONDITION

Percent Poor and Very Poor, Weekly



G-NP-31
08/13/12

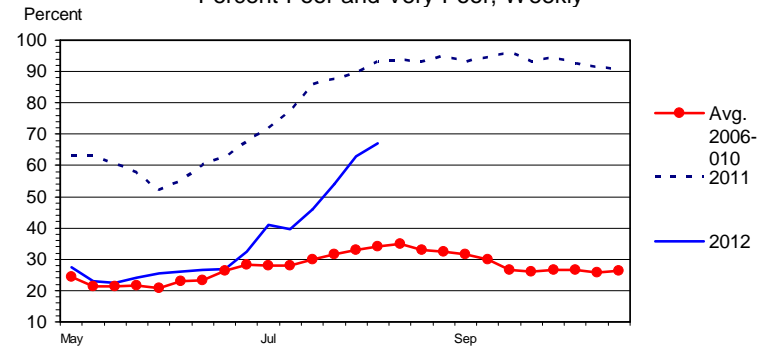
Livestock Marketing Information Center
Data Source: USDA-NASS, Compiled & Analysis by LMIC

KANSAS STATE UNIVERSITY

OK & TX
20.4% of Cows
(2012)

SOUTHERN PLAINS REGION RANGE AND PASTURE CONDITION

Percent Poor and Very Poor, Weekly



G-NP-33
08/13/12

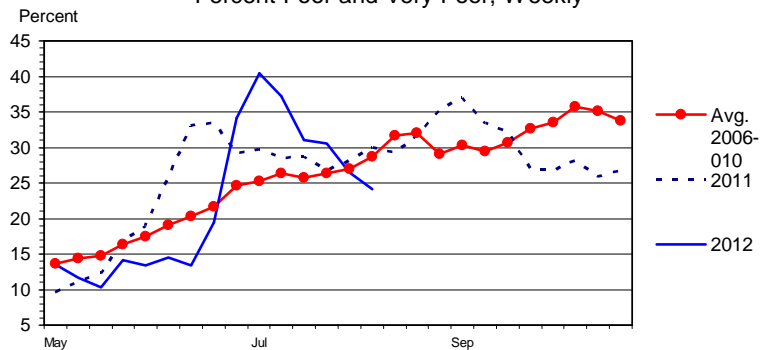
Livestock Marketing Information Center
Data Source: USDA-NASS, Compiled & Analysis by LMIC

KANSAS STATE UNIVERSITY

AL, AR, FL, GA, KY,
LA, MS, NC, SC, TN,
VA, & WV
24.5% of Cows (2012)

SOUTHEAST REGION RANGE AND PASTURE CONDITION

Percent Poor and Very Poor, Weekly



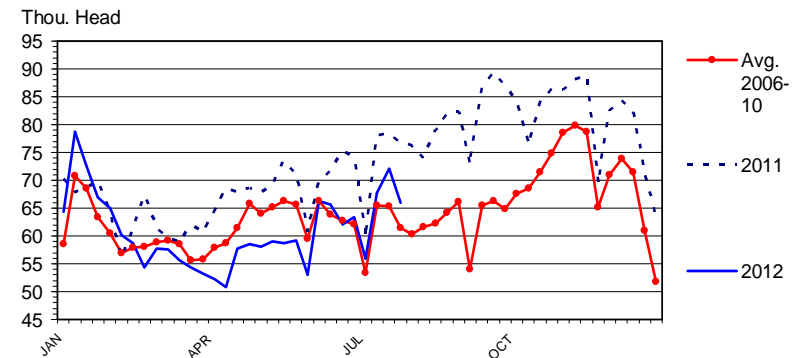
G-NP-36
08/13/12

Livestock Marketing Information Center
Data Source: USDA-NASS, Compiled & Analysis by LMIC

KANSAS STATE UNIVERSITY

BEEF COW SLAUGHTER

Federally Inspected, Weekly



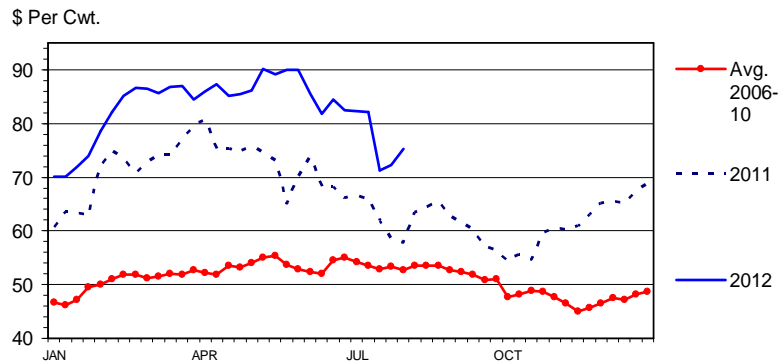
C-S-34
08/10/12

Livestock Marketing Information Center
Data Source: USDA-AMS & USDA-NASS

KANSAS STATE UNIVERSITY

SLAUGHTER COW PRICES

Southern Plains, 85-90% Lean, Weekly



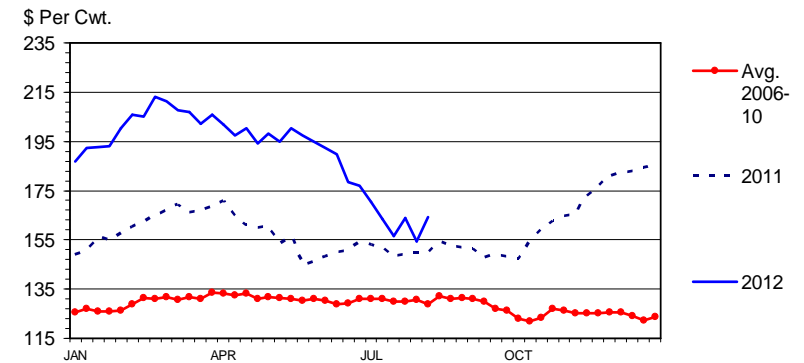
Livestock Marketing Information Center
Data Source: USDA-AMS

C-P-35
08/13/12

KANSAS STATE UNIVERSITY

MED. & LRG. #1 STEER CALF PRICES

400-500 Pounds, Southern Plains, Weekly



Livestock Marketing Information Center
Data Source: USDA-AMS, Compiled & Analysis by LMIC

C-P-49A
08/13/12

KANSAS STATE UNIVERSITY

July 1 Cattle Inventory Report

- Report was eliminated and then reinstated for 2012; future is unknown ...
- Downsizing of herd continues (yr-on-yr changes)
 - Beef cows: -3% (900,000 hd)
 - Beef heifer replacements: 0% (was +1.4% in Jan.)
 - 2012 calf crop estimate: -2.3% (800,000 hd)
 - Feeder supplies outside feedlots: -3.2% (1.18 mil. Hd)

KANSAS STATE UNIVERSITY

Economic Outlook Overview : Stockers

- Margins have improved by fall in calf prices
 - Drought = weak basis = improved projected margins...
 - Recent increase in calf prices squeezing margins...
- Of course, not everyone has the necessary feedstuffs to successfully engage this fall/winter
 - Increased VOG = increased rewards for management
 - Pockets of “excess silage” resources = opportunity...

KANSAS STATE UNIVERSITY

“Buy-Sell” spreadsheet tool

(<http://www.agmanager.info/livestock/budgets/production/beef/cattlebuysell.swf>)

- 8/16/12' Salina, KS Situation:
- BeefBasis.com forecasted price of 750 lb steer December 4, 2012 is \$146.71/cwt
- What is break-even purchase price of a 550 lb steer purchased on Sept. 4, 2012?
 - forecasted price is \$155.35/cwt
 - Up \$5 since last week...

KANSAS STATE UNIVERSITY

“Buy-Sell” spreadsheet tool

(<http://www.agmanager.info/livestock/budgets/production/beef/cattlebuysell.swf>)

Purchase Weight ¹	Selling Price						
	\$140.71	\$142.71	\$144.71	\$146.71	\$148.71	\$150.71	\$152.71
450	165.01	168.18	171.36	174.53	177.71	180.88	184.06
500	158.22	161.09	163.96	166.83	169.70	172.58	175.45
550	152.71	155.33	157.96	160.58	163.20	165.82	168.45
600	148.16	150.58	152.99	155.41	157.83	160.24	162.66
650	144.35	146.59	148.83	151.07	153.32	155.56	157.80
700	141.13	143.22	145.31	147.40	149.49	151.58	153.67
750	N/A	N/A	N/A	N/A	N/A	N/A	N/A

¹ Enter the minimum purchase weight you are willing to consider.

² Based on a feeding cost of gain of \$90/cwt.

Expected Return: +\$10.46/head [2.0 * (\$160.58-\$155.35)]

Feeding COG \$80 = +\$17.12/head Expected Return

Feeding COG \$100 = +\$3.80/head Expected Return

COG of \$105 = +/- Breakeven (550 lbs to 750 lbs)

+ Exp. Returns with only 100 lb gains (550 lbs to 650 lbs) if COG < \$100

KANSAS STATE UNIVERSITY

Economic Outlook Overview : Feedlots

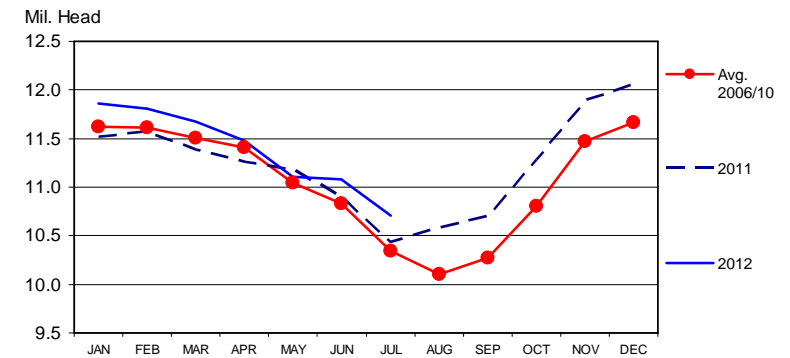
- Excess capacity concerns remain...
 - Drought improves this initially, makes it worse over coming years...
 - Mexican feeder supplies may be drying up also...
- Forecasted losses persist...
 - Current closeouts are at historically high losses...
 - Elevated cost of gain

KANSAS STATE UNIVERSITY

Pre- 8/17 COF Report Estimates:

On Feed Aug 1 (up 0.7%) {-0.4% to +1.5%}

CATTLE ON FEED US Total, Monthly



Livestock Marketing Information Center

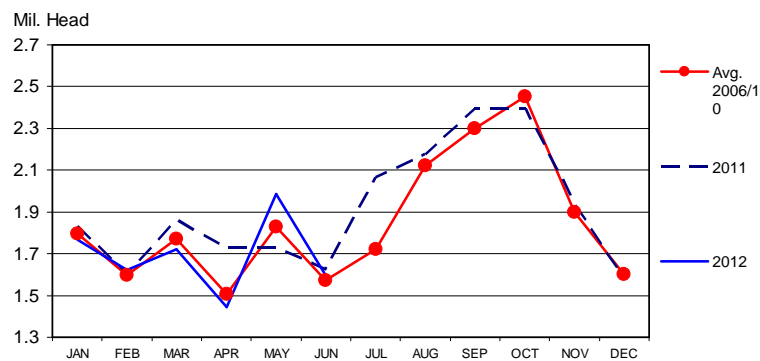
Data Source: USDA-NASS

C-N-10
07/20/12

KANSAS STATE UNIVERSITY

Pre- 8/17 COF Report Estimates:
Placed in July (down 8.6%) {-13.3% to -1.0%}

NET FEEDLOT PLACEMENTS US Total, Monthly

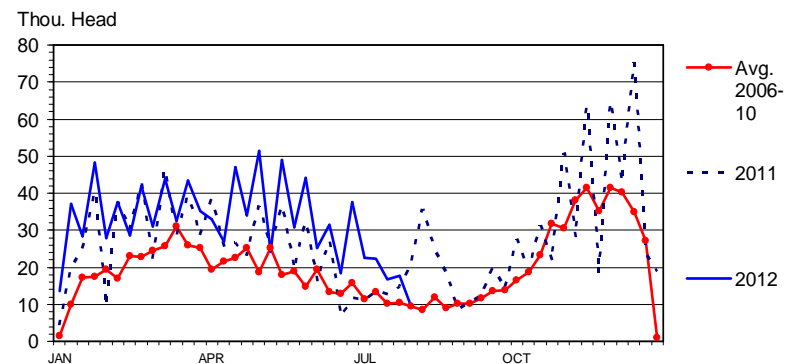


Livestock Marketing Information Center
Data Source: USDA-NASS, Compiled & Analysis by LMIC

C-N-09
07/20/12

KANSAS STATE UNIVERSITY

FEEDER CATTLE IMPORTS FROM MEXICO Weekly



Data Source: USDA-AMS & APHIS

KANSAS STATE UNIVERSITY

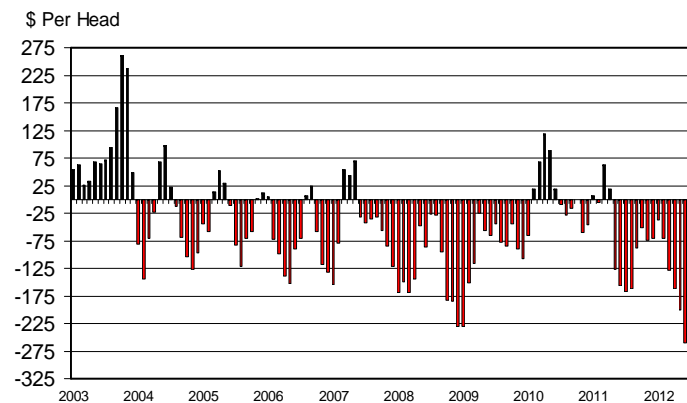
Historical and Projected Kansas Feedlot Net Returns (as of 8/6/12')

(<http://www.agmanager.info/livestock/marketing/outlook/newsletters/FinishingReturns/default.asp>)

Table 1. Projected Values for Finishing Steers in Kansas Feedyards*

Closeout Mo-Yr	Net Return	FCOG**	Fed Price	Feeder Price	Breakeven FCOG**	Breakeven Fed Price	Breakeven Feeder Price
Jul-12	-290.98	105.26	114.04	152.33	52.18	135.25	117.00
Aug-12	-200.17	106.71	123.32	155.03	70.08	137.78	131.14
Sep-12	-209.61	110.00	123.14	153.01	70.52	138.33	128.33
Oct-12	-150.02	110.37	127.29	153.27	83.01	138.12	135.35
Nov-12	-85.95	111.48	128.02	147.11	96.49	134.16	136.72
Dec-12	14.34	113.23	130.43	138.62	115.74	129.36	140.48

AVERAGE RETURNS TO CATTLE FEEDERS Feeding 725 Lb. Steers, S. Plains, Monthly



Livestock Marketing Information Center
Data Source: USDA-AMS & USDA-NASS, Compiled & Analysis by LMIC

C-P-22
08/01/12

KANSAS STATE UNIVERSITY

KANSAS STATE UNIVERSITY

QUARTERLY FORECASTS (LMIC: 8/10/12)

Year	Comm'l	% Chg.	Average	% Chg.	Comm'l	% Chg.
Quarter	Slaughter	from	Dressed	from	Beef	from
		Year Ago	Weight	Year Ago	Production	Year Ago
2011						
I	8,314	1.8	770.9	0.7%	6,410	2.6
II	8,640	-0.5	759.2	0.7%	6,559	0.2
III	8,738	-0.2	770.9	-0.3%	6,736	-0.5
IV	8,395	-3.0	773.1	-0.8%	6,490	-3.7
Year	34,087	-0.5	768.5	0.1%	26,195	-0.4
2012						
I	8,027	-3.5	782.7	1.5%	6,283	-2.0
II	8,311	-3.8	779.1	2.6%	6,475	-1.3
III	8,344	-4.5	787.2	2.1%	6,568	-2.5
IV	8,292	-1.2	784.0	1.4%	6,501	0.2
Year	32,974	-3.3	783.2	1.9%	25,826	-1.4
2013						
I	7,747	-3.5	783.7	0.1%	6,071	-3.4
II	7,985	-3.9	778.8	0.0%	6,219	-4.0
III	8,130	-2.6	792.9	0.7%	6,446	-1.9
IV	7,801	-5.9	793.1	1.2%	6,187	-4.8
Year	31,663	-4.0	787.1	0.5%	24,923	-3.5
2014						
I	7,321	-5.5	792.5	1.1%	5,802	-4.4
II	7,570	-5.2	785.6	0.9%	5,947	-4.4
III	7,709	-5.2	802.0	1.2%	6,183	-4.1
IV	7,321	-6.2	802.2	1.1%	5,873	-5.1
Year	29,921	-5.5	795.6	1.1%	23,805	-4.5

KANSAS STATE UNIVERSITY

QUARTERLY FORECASTS (LMIC: 8/10/12)

Year	Live Str.	% Chg.	Feeder Steer Price	
Quarter	Steer Price	from	Southern Plains	
		Year Ago	7-800#	5-600#
2011				
I	110.12	23.1	129.06	150.07
II	112.79	17.1	132.03	148.61
III	114.05	19.5	135.93	141.69
IV	121.99	21.7	143.15	153.11
Year	114.74	20.3	135.04	148.37
2012				
I	125.29	13.8	154.25	182.41
II	120.91	7.2	152.65	178.65
III	118-119	3.9	138-141	141-144
IV	122-124	0.8	137-140	140-145
Year	121-123	6.3	144-148	159-164
2013				
I	125-128	1.0	137-141	147-152
II	126-130	5.9	141-147	154-160
III	124-129	6.8	145-152	158-165
IV	126-132	4.9	146-153	158-166
Year	126-129	4.5	143-147	155-160
2014				
I	130-137	5.5	152-160	172-181
II	132-140	6.3	155-165	175-187
III	130-139	6.3	156-167	171-184
IV	132-142	6.2	154-166	168-183
Year	132-138	5.9	156-163	174-181

KANSAS STATE UNIVERSITY

Economic Outlook Overview : Beef Demand

- Meat prices rising w/i basket of purchases...
- Domestic demand has surprised analysts...
- Export success “tempered” but prospects remain bullish...
- Discussion on demand “getting complicated”
 - Growing interest in “how my food is produced”
 - Animal welfare, food safety, antibiotics, hormone use, local, organic, traceability...
 - LFTB (lean finely textured beef) discussion...
 - Customer vs. consumer distinction importance...

KANSAS STATE UNIVERSITY

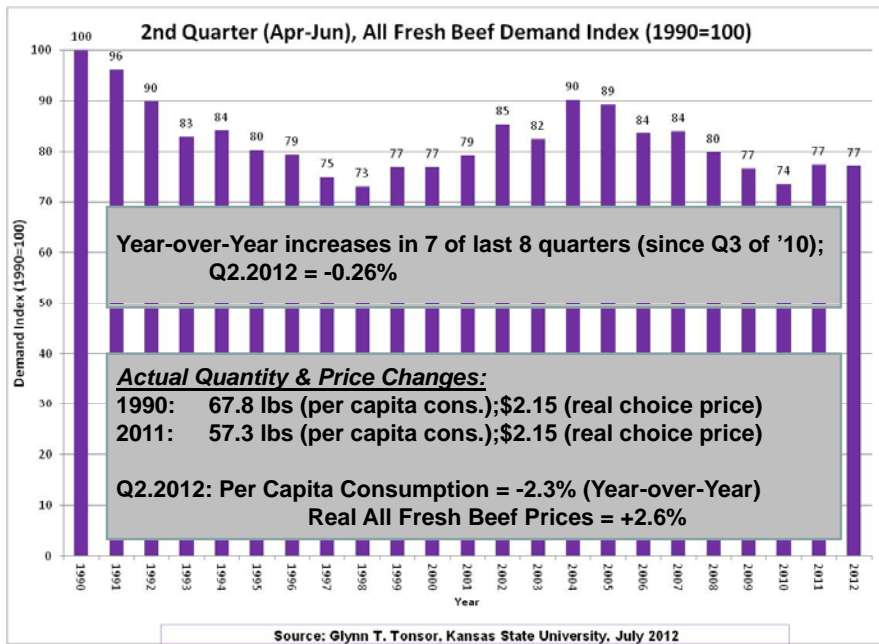
SOCIAL MEDIA
Man-Made Meat

A TIME.com piece on the world's first lab-grown burger, to be served in 2012, got our Google+ followers so riled up that they maxed out the site's 500-comment limit, with many answering our question, Would you eat test-tube meat?

Comments, clockwise from left: Brontae Hunter, Miss M, Gian Robinson, Phil DiNuzzo

Source: March 12, 2012 TIME magazine

KANSAS STATE UNIVERSITY



Big Picture Points of Consideration

- BEEF Magazine Poll (N=99 as of 8/17/11')
 - “If you had to liquidate cattle this year because of flooding or drought, what do you plan to do with the proceeds?”
 - 47% Restock with cows when conditions improve
 - 9% Restock but change production models (e.g., buy stockers rather than cows)
 - 27% Keep the cash; leave the business
 - 6% Reinvest the cash in another non-livestock ag enterprise
 - 10% Don't know
 - How would a current survey look?
- *What expected profit is needed to trigger cow-calf expansion?*
 - *Is recent profit or expected profit more influential in decision?*
- *When, where, how will excess capacity begin to be resolved?*

USDA's longer-term projections (as of Feb. 2012) ...

<http://www.ers.usda.gov/Publications/OCE121/>

- “Developing World” Changes
 - Increasing global \$, pop., & per capita meat cons.
 - Africa & Middle East (4.4% GDP/yr)
 - Arguably the least understood growth market...
 - Latin America (4.2% GDP/yr)
 - Growing producer & consumer...
 - China (8.0% GDP/yr)
 - Canada has access but US does not ...
 - South Korea (3.7% GDP/yr – but 10x per capita inc. of China)
 - US has access but Canada does not...

USDA's longer-term projections (as of Feb. 2012) ...

<http://www.ers.usda.gov/Publications/OCE121/>

- “Developed World” Changes
 - Declining global economic prevalence, populations, & per capita meat consumption
 - US/Canada (2.5% GDP/yr)
 - Different dependence on domestic consumption...
 - Japan (1.0% GDP/yr):
 - Major meat importer currently but will exporters care less going forward?
 - Europe (1.9% GDP/yr):
 - Will influential role as “food thought leader” persist?

Wrap-up Thoughts

- Critical questions:
 - Do you have a comparative advantage?
 - Cost min vs. differentiation perspectives...
 - Can you embrace “the new normal” ?
 - Industry is down-sizing and changing rapidly...
- I encourage you to:
 - Recognize this “isn’t your father’s world” anymore and manage accordingly...
 - “Think globally, manage locally, and stay informed”

More information available at:



This presentation is available in PDF format at:
<http://www.agmanager.info/about/contributors/individual/tonsor.asp>

Glynn T. Tonsor
Associate Professor
Dept. of Agricultural Economics
Kansas State University
gtt@agecon.ksu.edu

Utilize a Wealth of Information Available at
AgManager.info

About AgManager.info

AgManager.info website is a comprehensive source of information, analysis, and decision-making tools for agricultural producers, agribusinesses, and others. The site serves as a clearinghouse for applied outreach information emanating from the Department of Agricultural Economics at Kansas State University. It was created by combining departmental and faculty sites as well as creating new features exclusive to the AgManager.info site. The goal of this coordination is to improve the organization of web-based material and allow greater access for agricultural producers and other clientele.



Receive Weekly Email Updates for
AgManager.Info

Receive Weekly Email Updates for *AgManager.info*:

Enter Email:

Submit Email

<http://www.AgManager.info/Evaluation/Email.htm>



K-State Decision Aides: Cattle Price Oriented

(<http://www.agmanager.info/Tools/default.asp>)

- Expectations on Future Cash Prices
 - <http://www.beefbasis.com/>
- Examine Feeder Cattle Risk Management Alternatives
 - “K-State Feeder Cattle Risk Management Tool”
- Project Premium/Discount of Calf/Steer Attributes
 - “K-State Feeder Cattle Price Analyzer”
- Stocker Breakeven Selling/Purchasing Prices
 - “Cattle Breakeven Selling and Purchase Prices”



KANSAS STATE UNIVERSITY

Other K-State Decision Aides

(<http://www.agmanager.info/Tools/default.asp>)

- NPV of Beef Replacements
 - “KSU-Beef Replacements”
- Beef Cow Lease Agreements
 - “KSU-CowLease”
- Determining Flint Hills Pasture Rents
 - “KSU-Graze.xls”



KANSAS STATE UNIVERSITY

webinars



WEBINAR
Beef-Cattle Economics



Beef-Cattle Economics webinar series

Series of quarterly webinars on beef-cattle markets and other industry-related issues.

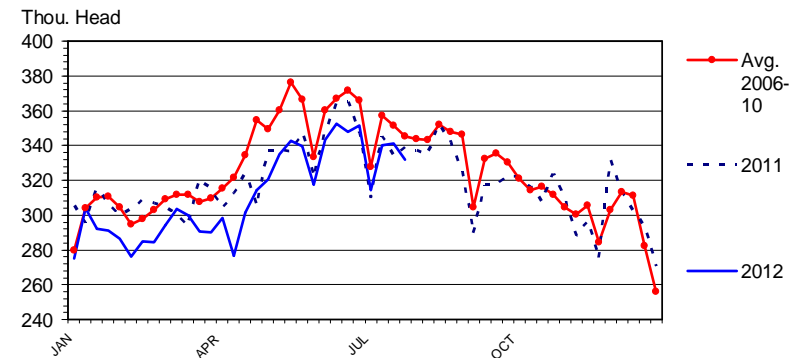
2012 schedule (all webinars begin at 1:30 CST)

- February 7
- May 1
- August 7
- November 6

For details about specific topics and registering for webinars see additional information on [AgManager.info](http://www.agmanager.info) AND <http://www.meetingplace.com/Industry/Webinars>

KANSAS STATE UNIVERSITY

STEER SLAUGHTER Federally Inspected, Weekly

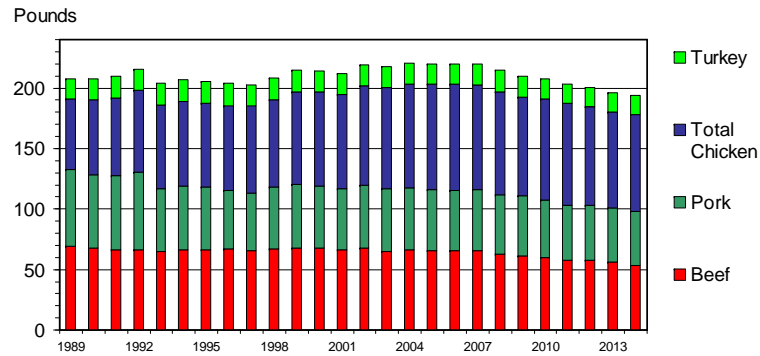


Livestock Marketing Information Center
Data Source: USDA-AMS & USDA-NASS

C-S-17
08/10/12

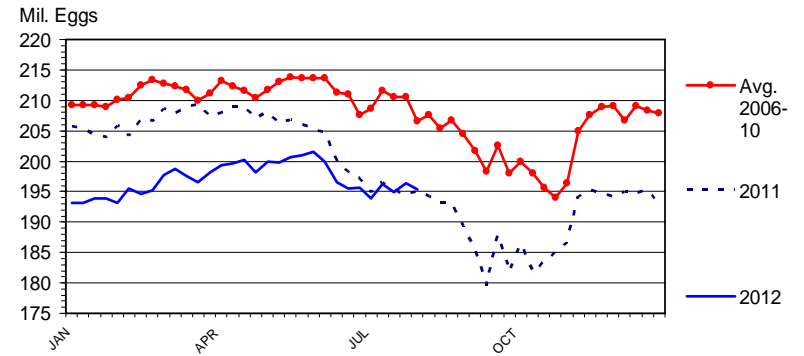
KANSAS STATE UNIVERSITY

U S RED MEAT & POULTRY CONSUMPTION Per Capita, Retail Weight, Annual



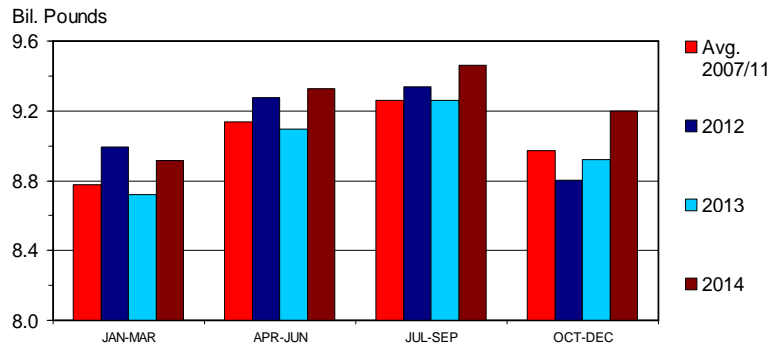
Data Source: USDA-NASS and ERS, Forecasts by LMIC

BROILER EGGS SET Weekly



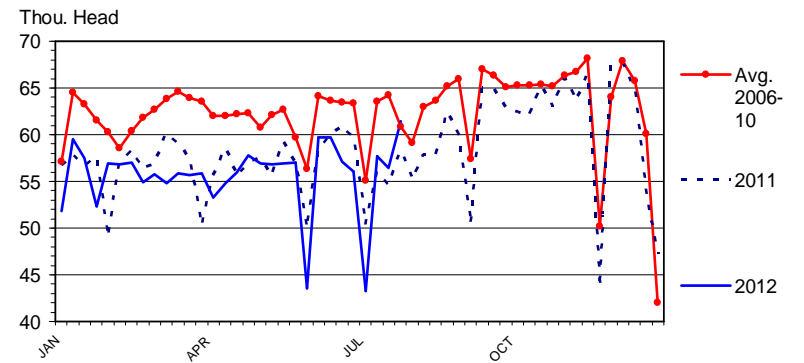
Data Source: USDA-NASS

RTC BROILER PRODUCTION Quarterly



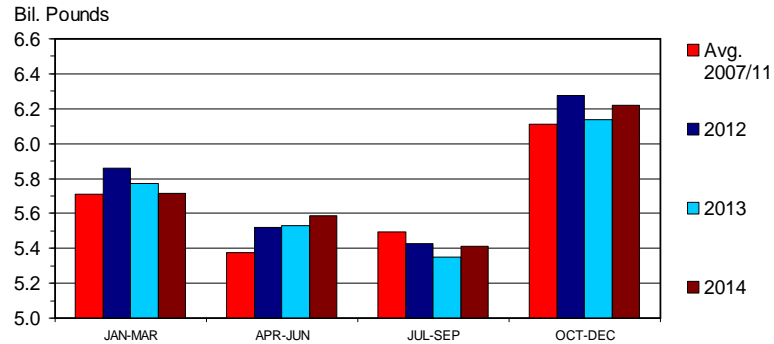
Data Source: USDA-NASS, Forecasts by LMIC

SOW SLAUGHTER Federally Inspected, Weekly



Data Source: USDA-NASS

COMMERCIAL PORK PRODUCTION Quarterly



Data Source: USDA-NASS, Forecasts by LMIC

KANSAS STATE UNIVERSITY

QUARTERLY FORECASTS (LMIC: 8/10/12)

Year	Comm'l Slaughter	% Chg. from Year Ago	Average Carcass Weight	% Chg. from Year Ago	Comm'l Pork Production	% Chg. from Year Ago
2011						
I	27,483	-0.5	208	2.3	5,719	2.0
II	26,110	0.1	206	1.0	5,370	1.3
III	27,379	1.7	201	-0.2	5,484	1.5
IV	29,888	0.9	207	0.0	6,186	1.0
Year	110,860	0.5	206	0.8	22,758	1.4
2012						
I	28,104	2.3	209	0.2	5,858	2.4
II	26,659	2.1	207	0.6	5,519	2.8
III	27,172	-0.8	200	-0.4	5,429	-1.0
IV	30,603	2.4	205	-1.0	6,279	1.5
Year	112,538	1.5	205	-0.2	23,084	1.4
2013						
I	27,974	-0.5	206	-1.1	5,770	-1.5
II	26,801	0.5	205	-1.1	5,495	-0.4
III	26,738	-1.6	198	-0.9	5,294	-2.5
IV	29,771	-2.7	206	0.2	6,120	-2.5
Year	111,284	-1.1	204	-0.7	22,679	-1.8
2014						
I	27,666	-1.1	207	0.2	5,717	-0.9
II	27,021	0.8	205	0.2	5,552	1.0
III	26,892	0.6	198	0.2	5,336	0.8
IV	30,097	1.1	206	0.4	6,210	1.5
Year	111,676	0.4	204	0.2	22,814	0.6

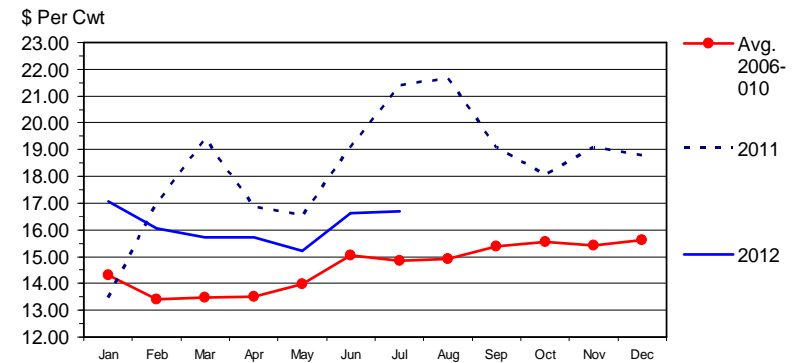
KANSAS STATE UNIVERSITY

QUARTERLY FORECASTS (LMIC: 8/10/12)

Year	Per Capita Consumption	% Chg. from Year Ago	Prices National Wtd Avg Base	% Chg. from Year Ago
2011				
I	10.72680593	-3.587238437	78.38280297	18.9281628
II	10.40752424	-2.60745431	89.4931746	16.1658363
III	10.32113306	-6.362109999	92.71182022	18.5489147
IV	11.50869566	-4.508911808	85.02873016	26.3389646
Year	42.96415889	-4.282851573	86.40413199	19.8166763
2012				
I	10.44139129	-2.660760707	84.1147619	7.31277617
II	10.28524702	-1.17489244	85.30696248	-4.67768871
III	10.36711432	0.4455058989-94		-1.30708276
IV	11.93163497	3.67495431482-87		-0.6218253
Year	43.0253876	0.14251113585-88		0.58139535
2013				
I	10.47372655	0.30968345582-88		1.05241705
II	10.13089214	-1.50074066886-92		4.32911618
III	9.822844647	-5.24996305291-96		2.18579235
IV	11.52404905	-3.41601065380-86		-1.77514793
Year	41.95151239	-2.49591061585-91		1.73410405
2014				
I	10.22860287	-2.34036737682-91		1.76470588
II	10.15749493	0.2625907986-96		2.24719101
III	9.872831338	0.50888202889-97		-0.53475936
IV	11.58901334	0.56372801777-88		-0.60240964
Year	41.84794248	-0.24688002884-93		0.56818182

KANSAS STATE UNIVERSITY

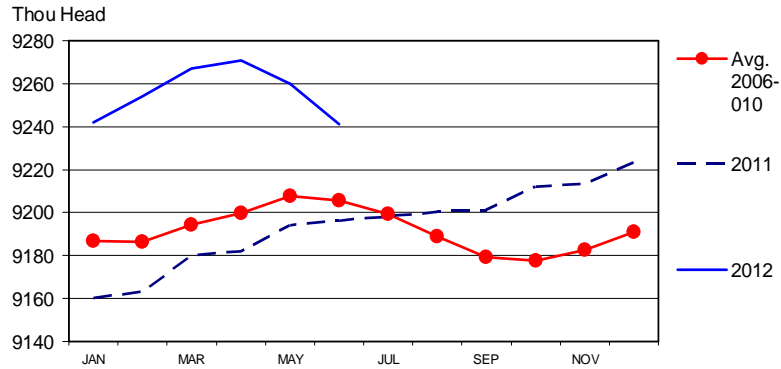
CLASS III MILK PRICES FMMO, Monthly



Data Source: USDA-AMS

KANSAS STATE UNIVERSITY

DAIRY COW INVENTORY US Total, Monthly

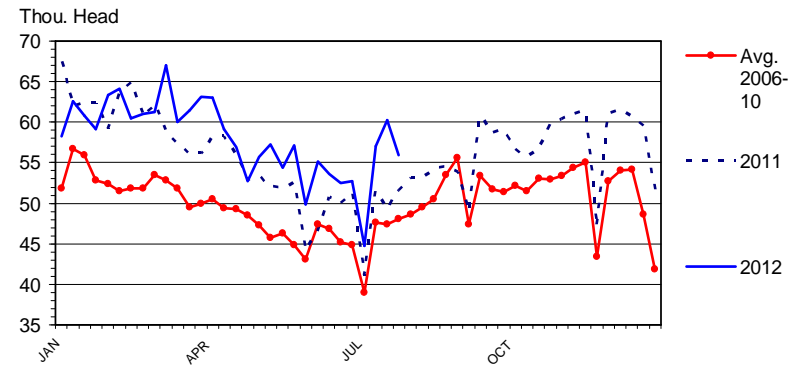


Data Source: USDA-NASS

KANSAS STATE UNIVERSITY



DAIRY COW SLAUGHTER Federally Inspected, Weekly

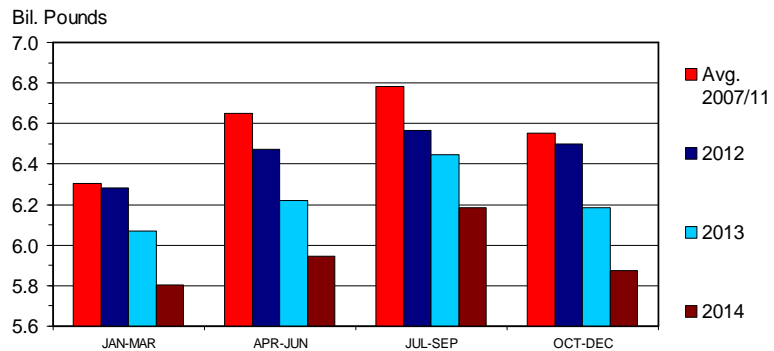


Data Source: USDA-NASS

KANSAS STATE UNIVERSITY



COMMERCIAL BEEF PRODUCTION Quarterly

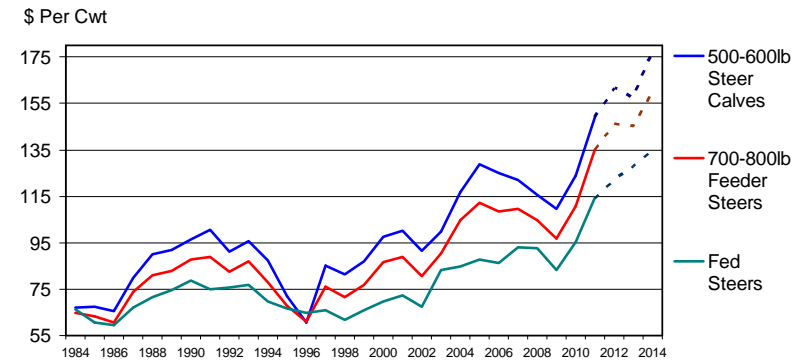


Data Source: USDA-NASS, Forecasts by LMIC

KANSAS STATE UNIVERSITY



ANNUAL AVERAGE CATTLE PRICES Southern Plains



Data Source: USDA-AMS, Forecasts by LMIC

KANSAS STATE UNIVERSITY

