

Economics of Agriculture During the COVID-19 Pandemic: A Series of Online Gatherings

2019 Kansas Farm Income Report KFMA Analysis Summary

KEVIN HERBEL – KFMA EXECUTIVE DIRECTOR

MARK DIKEMAN – KFMA ASSOCIATE DIRECTOR



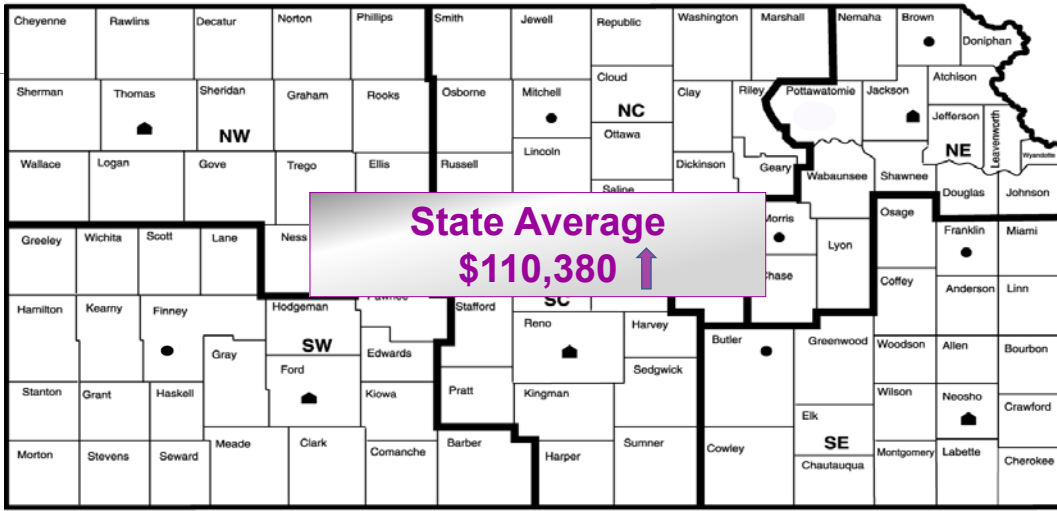
Direct Payments to Ag Producers – Coronavirus Food Assistance Program

Friday, May 22, 2020 – 9:00 am CT
Register at AgManager.info





Kansas Farm Management Association 2019 Net Farm Income



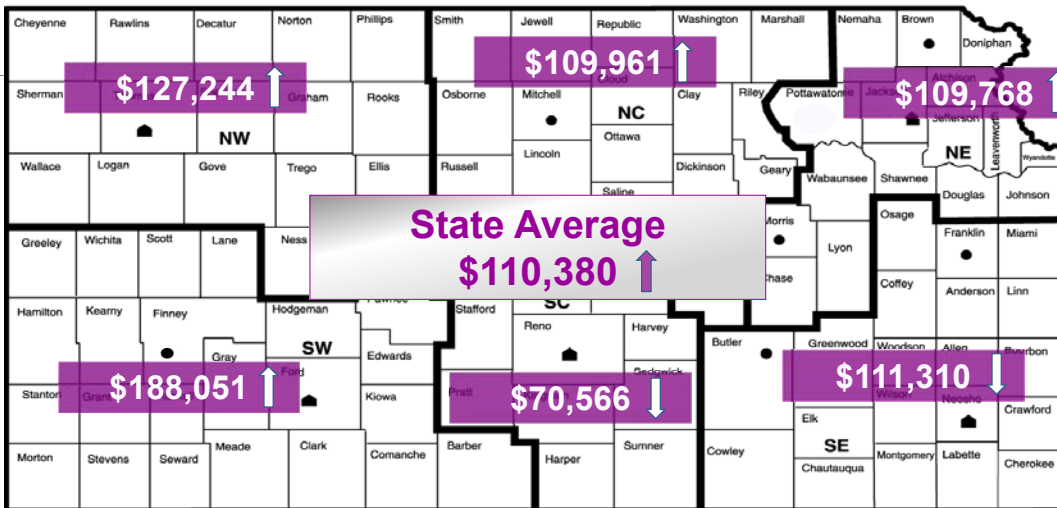
▲ ASSOCIATION HEADQUARTERS ● SATELLITE OFFICE



KANSAS STATE UNIVERSITY | Agricultural Economics



Kansas Farm Management Association 2019 Net Farm Income



▲ ASSOCIATION HEADQUARTERS ● SATELLITE OFFICE



KANSAS STATE UNIVERSITY | Agricultural Economics



Kansas Farm Management Association 2019 Net Farm Income

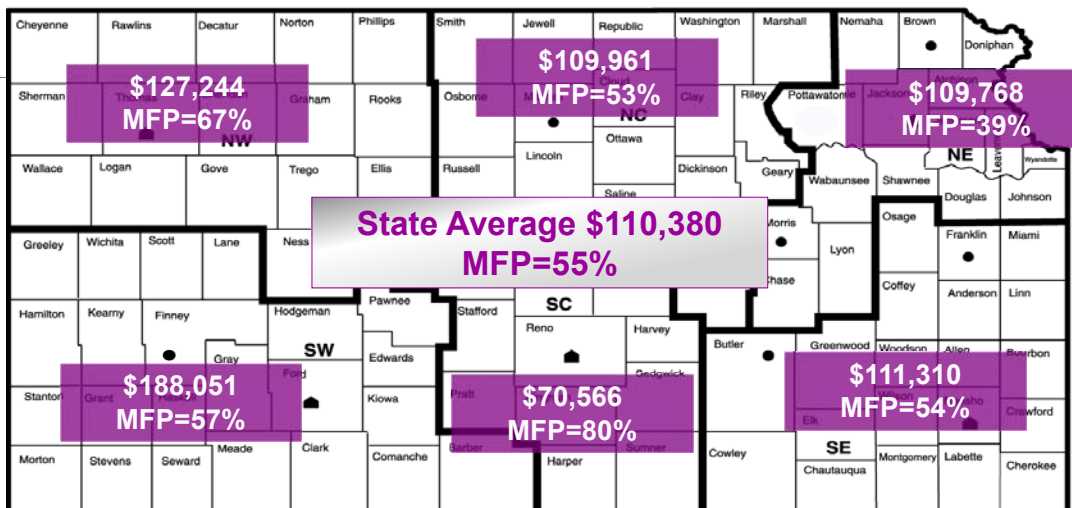
- Strong dryland fall crop yields in NW & western NC
- Impressive wheat yields in SW, portions of NW & NC
- Excessive moisture fall 2018 & spring 2019 in eastern KS
- Prevented plant acres in eastern KS
- Difficult management & high livestock death loss caused by muddy conditions & poor weather
- Strong hay & forage yields with low quality
- Fluctuating market prices
- Government payments & Market Facilitation Program Payments



KANSAS STATE UNIVERSITY | Agricultural Economics



Kansas Farm Management Association 2019 Net Farm Income



▲ ASSOCIATION HEADQUARTERS

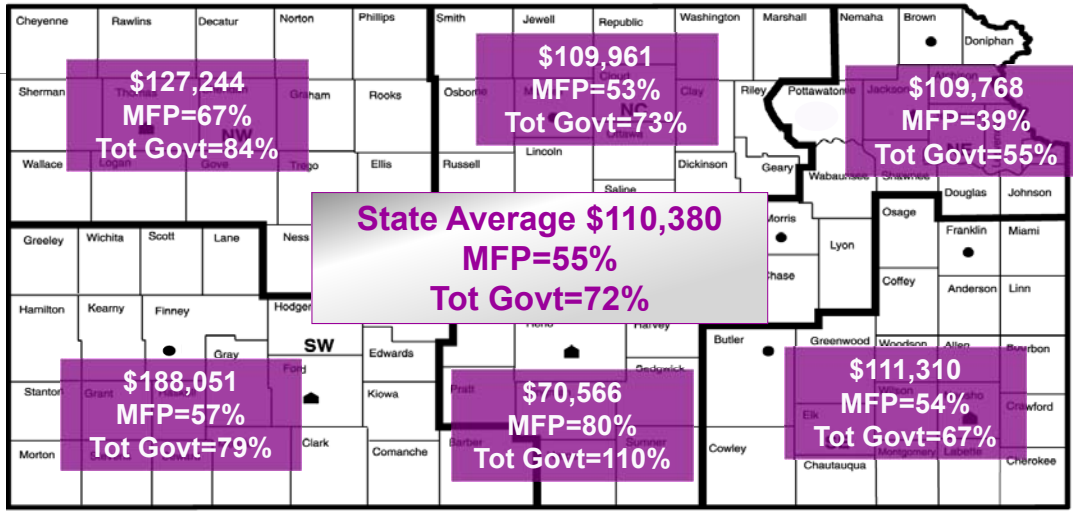
● SATELLITE OFFICE



KANSAS STATE UNIVERSITY | Agricultural Economics



Kansas Farm Management Association 2019 Net Farm Income



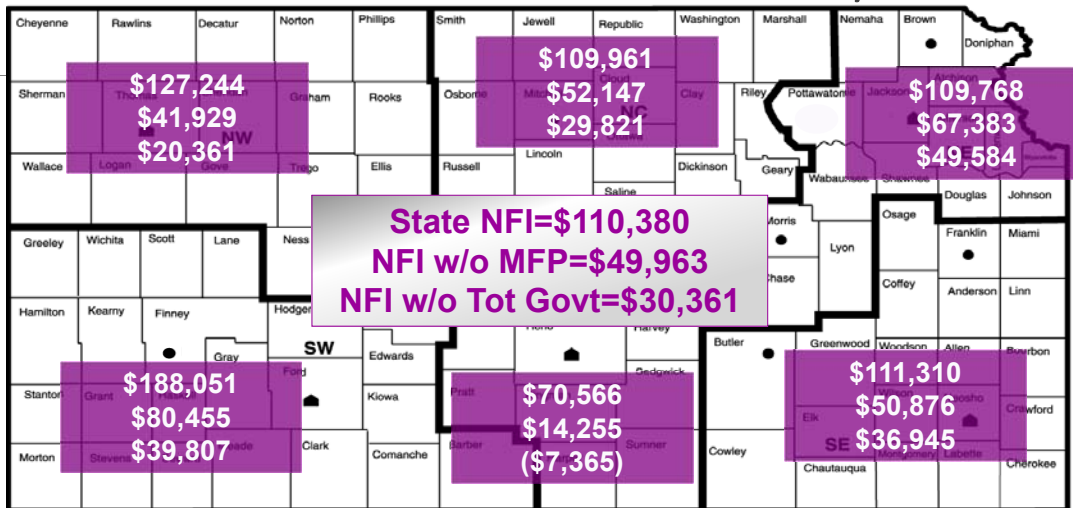
▲ ASSOCIATION HEADQUARTERS ● SATELLITE OFFICE



KANSAS STATE UNIVERSITY | Agricultural Economics



Kansas Farm Management Association 2019 NFI with and without Gov't Pymts

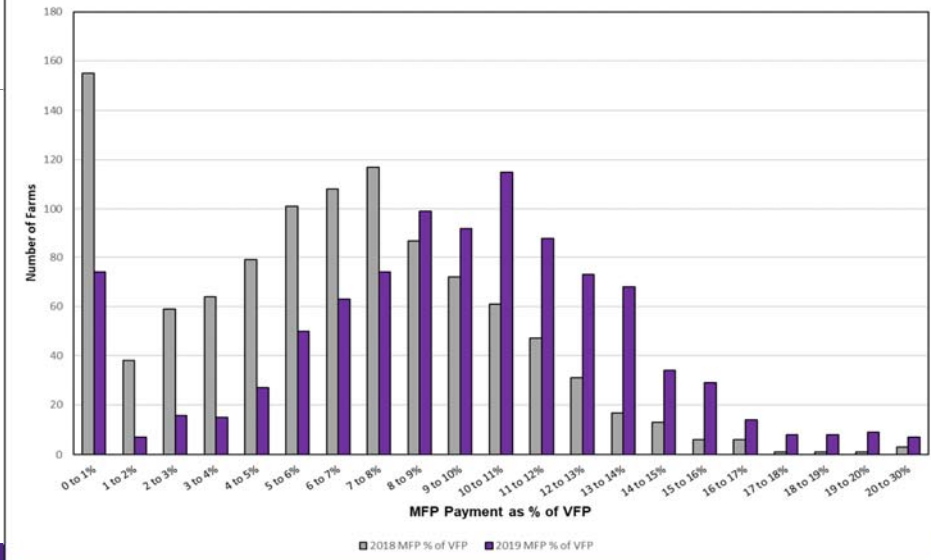


▲ ASSOCIATION HEADQUARTERS ● SATELLITE OFFICE

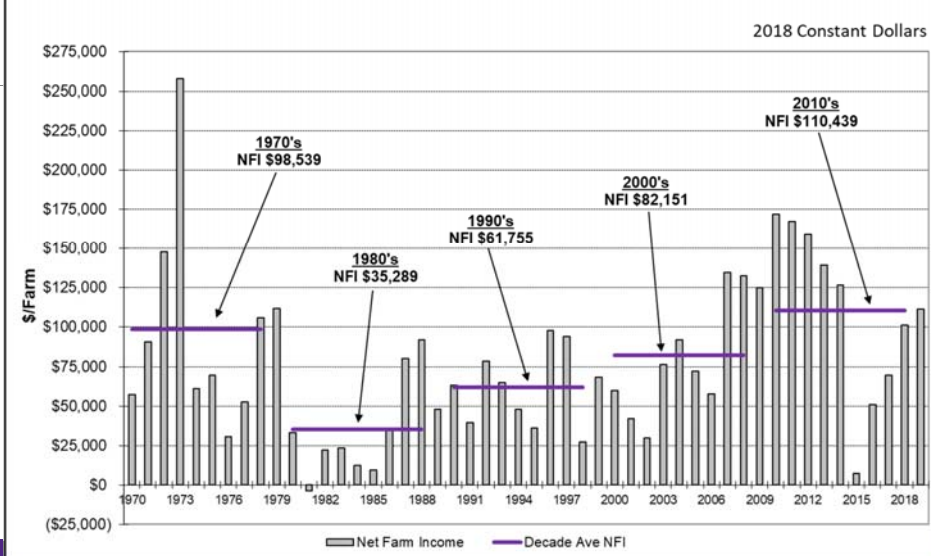


KANSAS STATE UNIVERSITY | Agricultural Economics

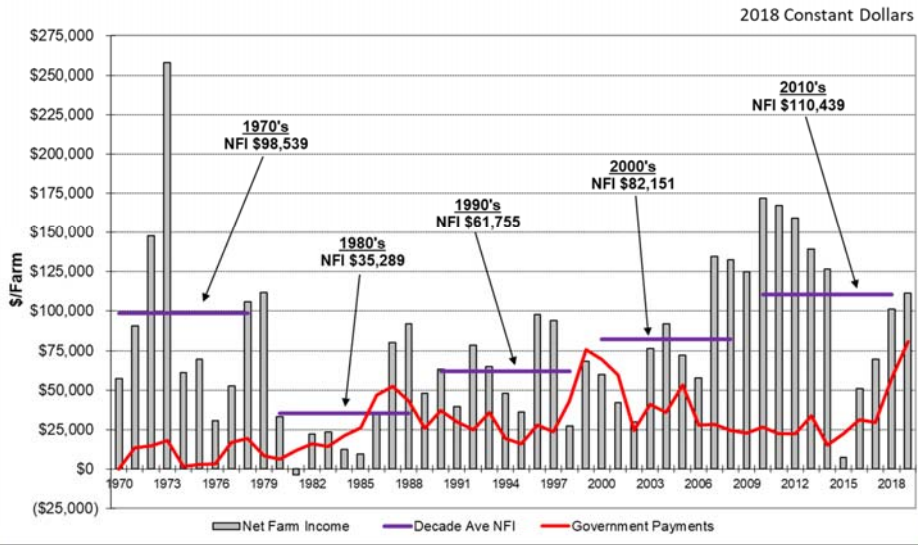
Kansas Farm Management Association Market Facilitation Program, 2018 & 2019



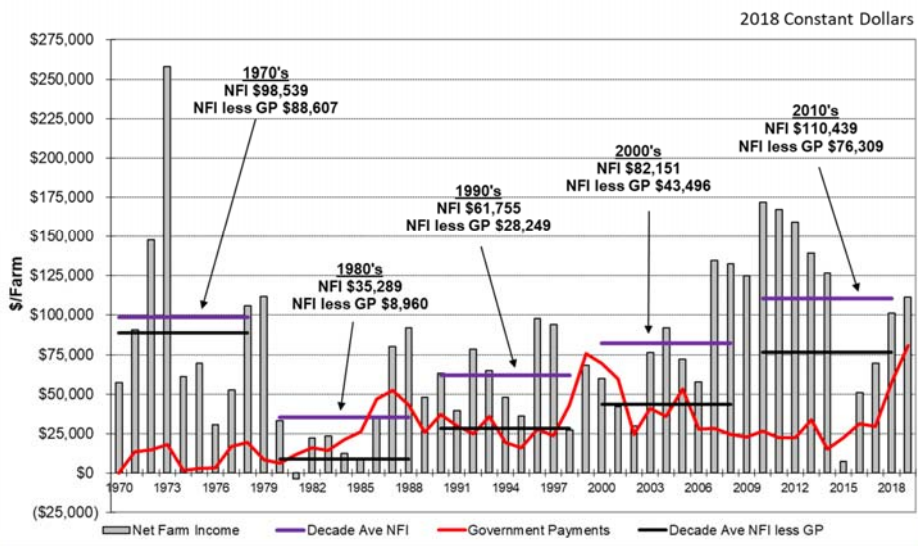
Kansas Farm Management Association Inflation Adjusted Net Farm Income, 1970-2019



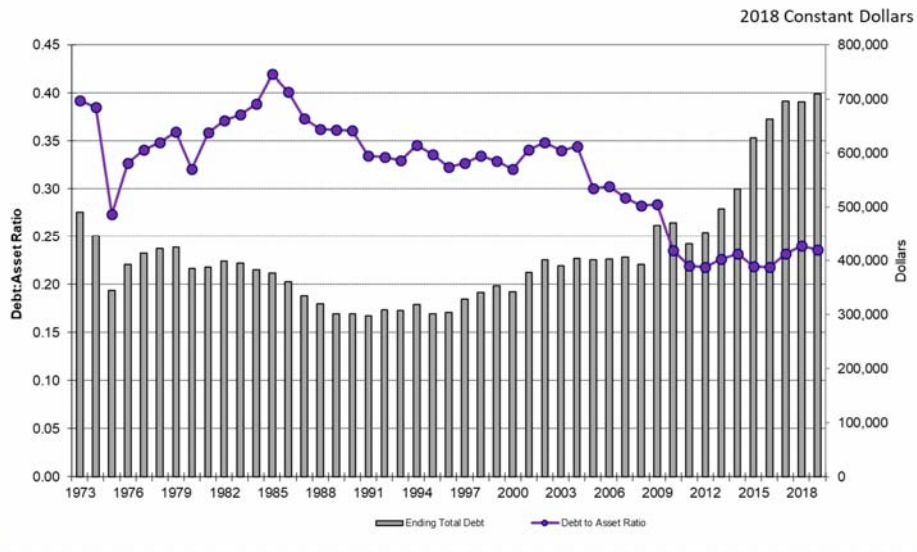
Kansas Farm Management Association Inflation Adjusted Net Farm Income, 1970-2019



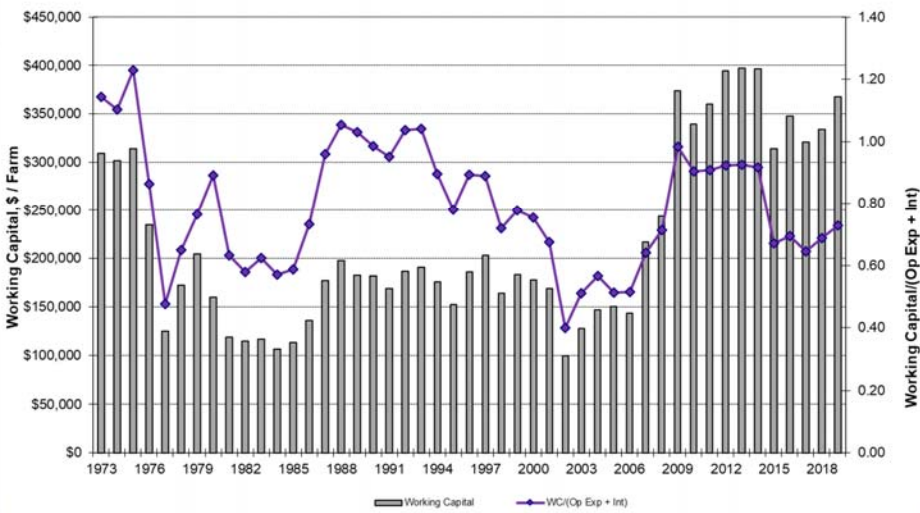
Kansas Farm Management Association Inflation Adjusted Net Farm Income, 1970-2019



Kansas Farm Management Association Inflation Adjusted Solvency Trends, 1973-2019



Kansas Farm Management Association Inflation Adjusted Liquidity Trends, 1973-2019



Kansas Farm Management Association

Kevin Herbel

kherbel@ksu.edu

785-532-8706

Mark Dikeman

dikemanm@ksu.edu

785-539-0373



<https://agmanager.info/kfma/whole-farm-analysis/kfma-executive-summary>

<https://agmanager.info/kfma/kfma-contacts>



KANSAS STATE UNIVERSITY | Agricultural Economics