



IGP Export Pace

Wheat, Corn, Grain Sorghum, and Soybean Complex

17th April 2026
Department of Grain & Food Science,
Kansas State University

by Guy H. Allen – Senior Economist, International Grains Program, Kansas State University

For timely market news and quotes see IGP Market Information Website:

<http://www.dtnigp.com/> Find me on Twitter [igpguy1 @igpguy1](#)

KSU Ag Manager Link: <https://www.agmanager.info/grain-marketing/publications/us-grain-exports-and-trade>

KSU Agriculture Today Podcast Link: <https://agtodayksu.libsyn.com/timeliness-of-corn-and-soybean-plantingworld-grain-supply-and-demand>

IGP Market Information: <http://www.dtnigp.com/index.cfm>

USDA Transportation Report: <https://www.ams.usda.gov/services/transportation-analysis/gtr>

USDA FAS Historical Grain Shipments: <https://apps.fas.usda.gov/export-sales/wkHistData.htm>, <https://apps.fas.usda.gov/export-sales/complete.htm>

Contents

| | |
|---|-----------|
| U.S. EXPORT ACTIVITY | 1 |
| ➤ Export Sales | 1 |
| ➤ Vessel Loadings | 1 |
| ➤ Export Inspections | 2 |
| CEREAL GRAINS | 5 |
| ➤ Wheat Export Shipments and Sales | 5 |
| ➤ Rice Export Shipments and Sales | 5 |
| COARSE GRAINS | 7 |
| OILSEED COMPLEX | 11 |
| ➤ Soybean Export Shipments and Sales | 11 |
| ➤ Soybean Oil Export Shipments and Sales | 11 |

- This summary based on reports for the 17th of April 2026
- Outstanding Export Sales (Unshipped Balances) on the 9th of April 2026
- Export Shipments in Current Marketing Year
- Daily Sales Reported for the 16th of April 2026

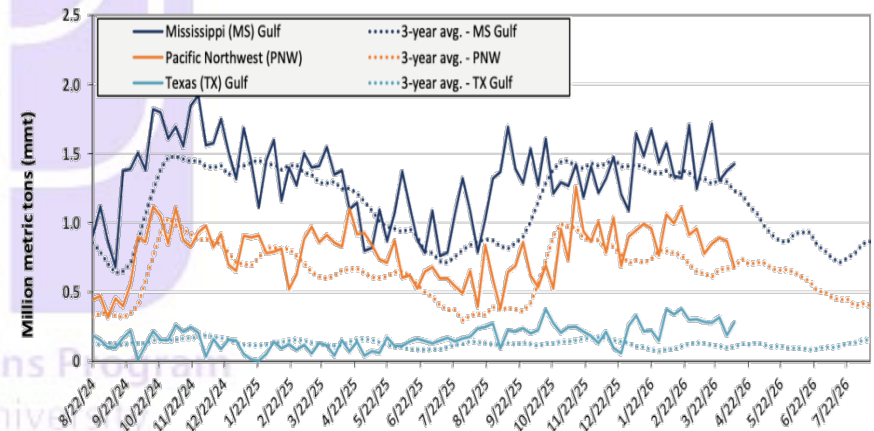
U.S. EXPORT ACTIVITY

➤ Export Sales

- Export Sales data for the week ending April 09, unshipped balances of corn, soybeans, and wheat for marketing year (MY) 2025/26 totaled 32.92 mmmts, down 3% from last week and up 24% from the same time last year.
- Net corn export sales were 1.40 mmmts, up 3% from last week.
- Net soybean export sales were .25 mmmts, down 16% from last week.
- Net wheat export sales were .10 mmmts, down 39% from last week.

➤ Vessel Loadings

Figure 18. U.S. grain inspections for U.S. Gulf and PNW (wheat, corn, and soybeans)



Ocean - For the week ending April 9, 30 oceangoing grain vessels were loaded in the Gulf—9% fewer than the same period last year. Within the next 10 days (starting April 10), 33 vessels were expected to be loaded - 38% fewer than the same period last year. As of April 9, the rate for shipping a metric ton (mt) of grain from the U.S. Gulf to Japan was \$64.75, up 2% from the previous week. The rate from the Pacific Northwest to Japan was \$34.75 per mt, up 2% from the previous week.

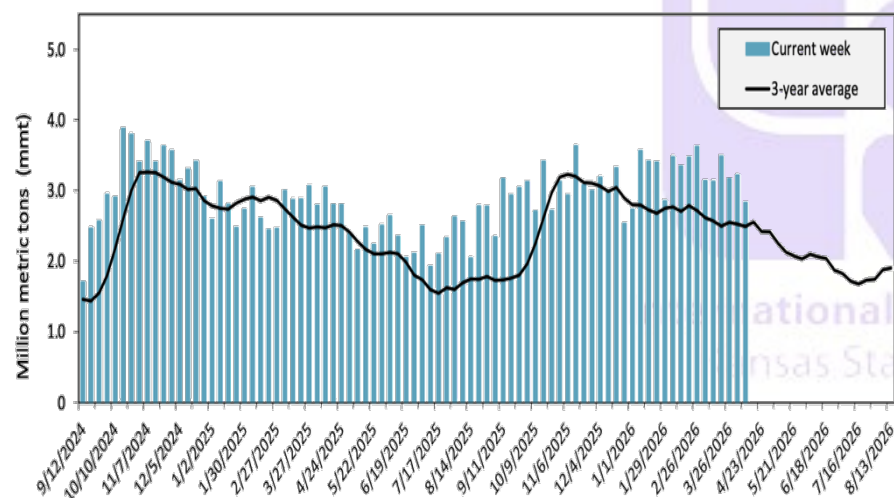
Table 14. U.S. export balances and cumulative exports (1,000 metric tons)

| Grain Exports | | Wheat | | | | | | Corn | Soybeans | Total |
|--|---|-----------------------|-----------------------|-----------------------|------------------------|-------|-----------|--------|----------|---------|
| | | Hard red winter (HRW) | Soft red winter (SRW) | Hard red spring (HRS) | Soft white wheat (SWW) | Durum | All wheat | | | |
| Current unshipped (outstanding) export sales | For the week ending 4/9/2026 | 1,150 | 474 | 1,108 | 995 | 112 | 3,839 | 22,267 | 6,819 | 32,924 |
| | This week year ago | 1,223 | 387 | 1,082 | 1,066 | 71 | 3,829 | 18,176 | 4,512 | 26,518 |
| | Last 4 wks. as % of same period 2024/25 | 103 | 145 | 114 | 94 | 170 | 109 | 126 | 166 | 130 |
| Current shipped (cumulative) exports sales | 2025/26 YTD | 7,485 | 2,827 | 5,274 | 4,453 | 496 | 20,535 | 50,520 | 31,334 | 102,390 |
| | 2024/25YTD | 4,226 | 2,733 | 5,649 | 4,690 | 286 | 17,584 | 38,405 | 42,126 | 98,115 |
| | YTD 2025/26 as % of 2024/25 | 177 | 103 | 93 | 95 | 174 | 117 | 132 | 74 | 104 |
| | Total 2024/25 | 5,377 | 3,106 | 6,560 | 5,730 | 335 | 21,107 | 69,081 | 50,106 | 140,295 |
| | Total 2023/24 | 3,535 | 4,260 | 6,314 | 3,906 | 526 | 18,540 | 54,277 | 44,510 | 117,328 |

Note: The marketing year for wheat is June 1 to May 31 and, for corn and soybeans, September 1 to August 31. YTD = year-to-date; wks. = weeks.
Source: USDA, Foreign Agricultural Service.

➤ **Export Inspections**

Figure 17. U.S. grain inspected for export (wheat, corn, and soybeans)



**GRAINS INSPECTED AND/OR WEIGHED FOR EXPORT
REPORTED IN WEEK ENDING APR 09, 2026
-- METRIC TONS --**

| GRAIN | WEEK ENDING | | | CURRENT MARKET YEAR TO DATE | PREVIOUS MARKET YEAR TO DATE |
|--------------|------------------|------------------|------------------|-----------------------------|------------------------------|
| | 04/09/2026 | 04/02/2026 | 04/10/2025 | | |
| BARLEY | 0 | 0 | 220 | 7,145 | 10,087 |
| CORN | 1,609,987 | 2,027,676 | 1,829,980 | 50,032,675 | 37,514,508 |
| FLAXSEED | 24 | 48 | 0 | 552 | 384 |
| MIXED | 0 | 0 | 0 | 0 | 122 |
| OATS | 0 | 0 | 0 | 5,785 | 647 |
| RYE | 0 | 0 | 0 | 0 | 0 |
| SORGHUM | 200,856 | 59,357 | 34,403 | 3,126,559 | 1,638,626 |
| SOYBEANS | 730,777 | 793,456 | 554,893 | 31,415,267 | 42,146,507 |
| SUNFLOWER | 0 | 0 | 0 | 40 | 0 |
| WHEAT | 271,157 | 338,556 | 612,444 | 20,971,341 | 18,341,264 |
| Total | 2,812,801 | 3,219,093 | 3,031,940 | 105,559,364 | 99,652,145 |

CROP MARKETING YEARS BEGIN JUNE 1 FOR WHEAT, RYE, OATS, BARLEY AND FLAXSEED; SEPTEMBER 1 FOR CORN, SORGHUM, SOYBEANS AND SUNFLOWER SEEDS. INCLUDES WATERWAY SHIPMENTS TO CANADA.

**SOYBEANS INSPECTED AND/OR WEIGHED FOR EXPORT
BY PORT AREA AND COUNTRY OF DESTINATION
REPORTED IN WEEK ENDING APR 09, 2026
-- METRIC TONS --**

Source: https://www.ams.usda.gov/mnreports/wa_gr101.txt

Table 18. Grain inspections for export by U.S. port region (1,000 metric tons)

| Port regions | Commodity | For the week ending 04/09/2026 | Previous week* | Current week as % of previous | 2026 YTD* | 2025 YTD* | 2026 YTD as % of 2025 YTD | Last 4-weeks as % of: | | 2025 total* |
|----------------------|-----------|-----------------------------------|-------------------|----------------------------------|-----------|-----------|------------------------------|-----------------------|------------------|-------------|
| | | | | | | | | Last year | Prior 3-yr. avg. | |
| Pacific Northwest | Corn | 474 | 485 | 98 | 7,036 | 6,919 | 102 | 90 | 125 | 24,214 |
| | Soybeans | 68 | 270 | 25 | 3,043 | 1,724 | 177 | 183 | 373 | 2,957 |
| | Wheat | 137 | 113 | 121 | 2,689 | 2,834 | 95 | 64 | 66 | 12,271 |
| | All grain | 679 | 868 | 78 | 12,768 | 11,566 | 110 | 94 | 121 | 39,721 |
| Mississippi Gulf | Corn | 824 | 1,078 | 76 | 10,793 | 10,471 | 103 | 116 | 139 | 37,115 |
| | Soybeans | 560 | 235 | 238 | 9,092 | 8,311 | 109 | 91 | 99 | 23,350 |
| | Wheat | 42 | 62 | 67 | 907 | 1,022 | 89 | 78 | 80 | 3,980 |
| | All grain | 1,425 | 1,376 | 104 | 20,792 | 19,804 | 105 | 104 | 118 | 64,484 |
| Texas Gulf | Corn | 55 | 22 | 251 | 431 | 105 | 411 | n/a | 671 | 590 |
| | Soybeans | 0 | 0 | n/a | 100 | 106 | 94 | 63 | 190 | 1,431 |
| | Wheat | 28 | 109 | 26 | 1,234 | 845 | 146 | 85 | 128 | 4,690 |
| | All grain | 283 | 188 | 150 | 4,024 | 1,141 | 353 | 254 | 257 | 7,774 |
| Interior | Corn | 224 | 420 | 53 | 4,389 | 3,396 | 129 | 100 | 119 | 15,546 |
| | Soybeans | 96 | 185 | 52 | 2,023 | 1,870 | 108 | 106 | 112 | 7,712 |
| | Wheat | 64 | 55 | 117 | 824 | 805 | 102 | 97 | 117 | 3,104 |
| | All grain | 402 | 661 | 61 | 7,359 | 6,193 | 119 | 99 | 116 | 26,887 |
| Great Lakes | Corn | 0 | 23 | 0 | 23 | 0 | n/a | n/a | n/a | 414 |
| | Soybeans | 0 | 0 | n/a | 0 | 0 | n/a | n/a | 0 | 63 |
| | Wheat | 0 | 0 | n/a | 22 | 33 | 67 | 101 | 62 | 434 |
| | All grain | 0 | 23 | 0 | 45 | 33 | 136 | 308 | 126 | 911 |
| Atlantic | Corn | 33 | 0 | n/a | 499 | 121 | 413 | 523 | 924 | 607 |
| | Soybeans | 8 | 102 | 8 | 348 | 420 | 83 | 770 | 238 | 1,085 |
| | Wheat | 0 | 0 | n/a | 0 | 0 | n/a | n/a | 0 | 81 |
| | All grain | 41 | 102 | 40 | 847 | 541 | 157 | 594 | 433 | 1,773 |
| All Regions | Corn | 1,610 | 2,028 | 79 | 23,170 | 21,012 | 110 | 109 | 136 | 78,486 |
| | Soybeans | 731 | 793 | 92 | 15,011 | 12,535 | 120 | 111 | 127 | 36,851 |
| | Wheat | 271 | 339 | 80 | 5,676 | 5,538 | 102 | 76 | 85 | 24,560 |
| | All grain | 2,829 | 3,219 | 88 | 46,240 | 39,382 | 117 | 108 | 127 | 141,803 |

*Note: Data include revisions from prior weeks; "All grain" includes corn, soybeans, wheat, sorghum, oats, barley, rye, sunflower, flaxseed, and mixed grains; "All regions" includes listed regions and other minor regions not listed; YTD = year-to-date; n/a = not available or no change. A "-" in the table indicates a percentage change with a near-zero denominator for the period.

Source: USDA, Federal Grain Inspection Service.

➤ **BARGE MOVEMENTS**

Figure 12. Barge movements on the Mississippi River (Locks 27-Granite City, IL)

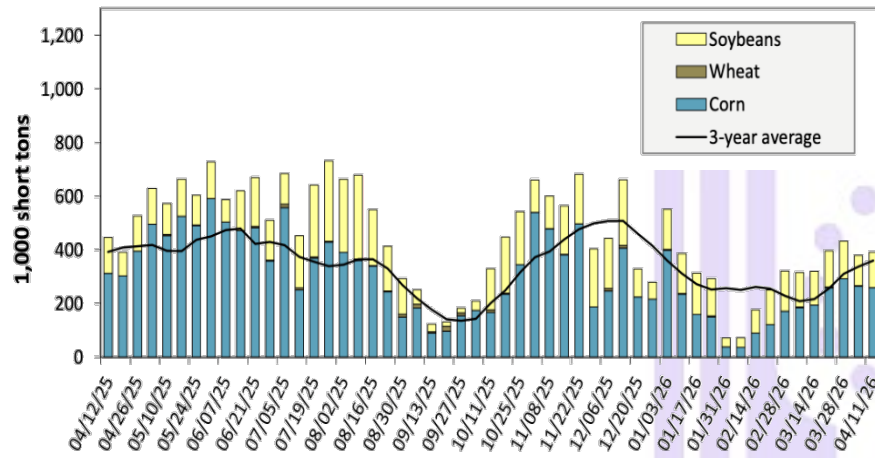
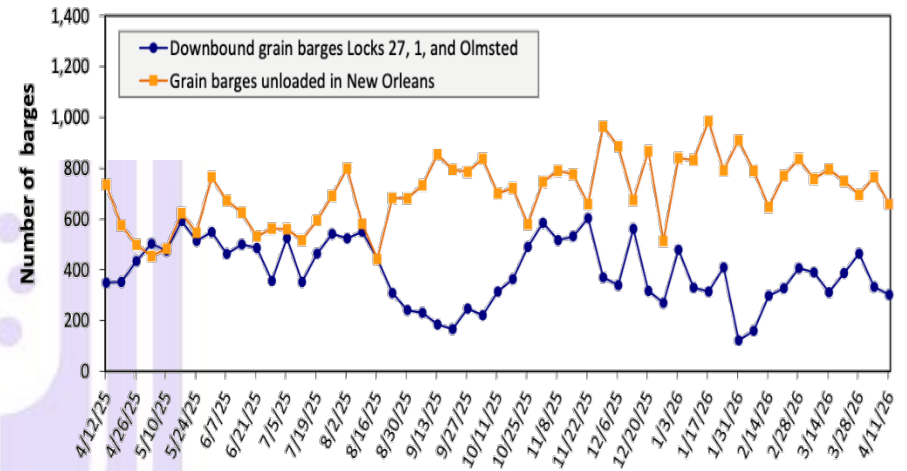


Figure 14. Grain barges for export in New Orleans region



Barge – For the week ending April 11th, barged grain movements totaled 505,000 tons. This was 6% less than the previous week and 10% less than the same week last year. For the week ending April 11, 302 barges moved down river, 30 fewer than the previous week. There were 658 grain barges unloaded in the New Orleans Region, 14% less than the previous week.

Table 10. Barged grain movements (1,000 tons)

| For the week ending 04/11/2026 | Corn | Wheat | Soybeans | Other | Total |
|--|--------|-------|----------|-------|--------|
| Mississippi River (Rock Island, IL (L15)) | 60 | 0 | 50 | 0 | 110 |
| Mississippi River (Winfield, MO (L25)) | 130 | 0 | 87 | 0 | 217 |
| Mississippi River (Alton, IL (L26)) | 261 | 0 | 130 | 0 | 391 |
| Mississippi River (Granite City, IL (L27)) | 259 | 0 | 132 | 0 | 391 |
| Illinois River (La Grange) | 84 | 0 | 59 | 0 | 143 |
| Ohio River (Olmsted) | 55 | 0 | 41 | 0 | 96 |
| Arkansas River (L1) | 0 | 11 | 7 | 0 | 18 |
| Weekly total - 2026 | 314 | 11 | 179 | 0 | 505 |
| Weekly total - 2025 | 378 | 0 | 185 | 0 | 562 |
| 2026 YTD | 3,844 | 243 | 2,878 | 28 | 6,992 |
| 2025 YTD | 4,665 | 265 | 3,380 | 75 | 8,386 |
| 2026 as % of 2025 YTD | 82 | 92 | 85 | 37 | 83 |
| Last 4 weeks as % of 2025 | 105 | 142 | 98 | 8 | 103 |
| Total 2025 | 20,015 | 1,259 | 11,322 | 166 | 32,761 |

Note: "Other" refers to oats, barley, sorghum, and rye. Total may not add up due to rounding. YTD = year to date. Weekly total, YTD, and calendar year total include Mississippi River lock 27, Ohio River Olmsted lock, and Arkansas Lock 1. "L" (as in "L15") refers to a lock, locks, or lock and dam facility. Source: U.S. Army Corps of Engineers.

CEREAL GRAINS

➤ Wheat Export Shipments and Sales

Wheat: Net sales of 100,300 mts for 2025/2026 were down 39% from the previous week and 48% from the prior 4-week average. Increases primarily for Nigeria (52,400 mts, including 50,500 mts switched from unknown destinations and decreases of 500 mts), Vietnam (34,800 mts, including 35,000 mts switched from the Philippines and decreases of 1,100 mts), Japan (29,700 mts), Mexico (25,100 mts, including decreases of 19,100 mts), and Colombia (20,300 mts), were offset by reductions for unknown destinations (54,300 mts) and the Philippines (37,000 mts).

Net sales of 131,000 mts for 2026/2027 were reported for South Korea (90,000 mts), Mexico (22,000 mts), and the Philippines (19,000 mts).

Exports of 312,200 mts were down 16% from the previous week and from the prior 4-week average. The destinations were primarily to Mexico (90,700 mts), Taiwan (54,300 mts), Nigeria (52,400 mts), Vietnam (34,800 mts), and Nicaragua (26,800 mts).

Source: USDA FAS - <https://apps.fas.usda.gov/esrqs#/reports/weeklyexportsalesreportdetail>

➤ Rice Export Shipments and Sales

Rice: Net sales of 102,800 mts for 2025/2026 were up noticeably from the previous week and up 85% from the prior 4-week average. Increases primarily for Senegal (35,000 mts), Colombia (26,800 mts), Haiti (15,100 mts, including decreases of 400 mts), Japan (14,500 mts), and El Salvador (12,000 mts switched from unknown destinations), were offset by reductions for unknown destinations (12,000 mts). Total net sales of 900 mts for 2026/2027 were for Taiwan.

Table 17. Top 10 importers of all U.S. wheat

| For the week ending 4/9/2026 | Total commitments (1,000 mt) | | % change current MY from last MY | Exports 3-year average 2022-24 (1,000 mt) |
|--|------------------------------|----------------|----------------------------------|---|
| | YTD MY 2025/26 | YTD MY 2024/25 | | |
| Mexico | 4,481 | 3,984 | 12 | 3,358 |
| Philippines | 2,893 | 2,597 | 11 | 2,473 |
| Japan | 2,183 | 2,109 | 4 | 2,045 |
| China | 336 | 139 | 142 | 1,137 |
| Korea | 1,878 | 2,395 | -22 | 1,674 |
| Taiwan | 976 | 1,012 | -4 | 935 |
| Thailand | 658 | 891 | -26 | 667 |
| Nigeria | 1,511 | 682 | 121 | 629 |
| Indonesia | 1,087 | 754 | 44 | 518 |
| Colombia | 723 | 473 | 53 | 489 |
| Top 10 importers | 16,726 | 15,037 | 11 | 13,926 |
| Total U.S. wheat export sales | 24,374 | 21,281 | 15 | 19,135 |
| % of YTD current month's export projection | 100% | 95% | - | - |
| Change from prior week | 100 | 76 | - | - |
| Top 10 importers' share of U.S. wheat export sales | 69% | 71% | - | 73% |
| USDA forecast, April 2026 | 24,494 | 22,480 | 9 | - |

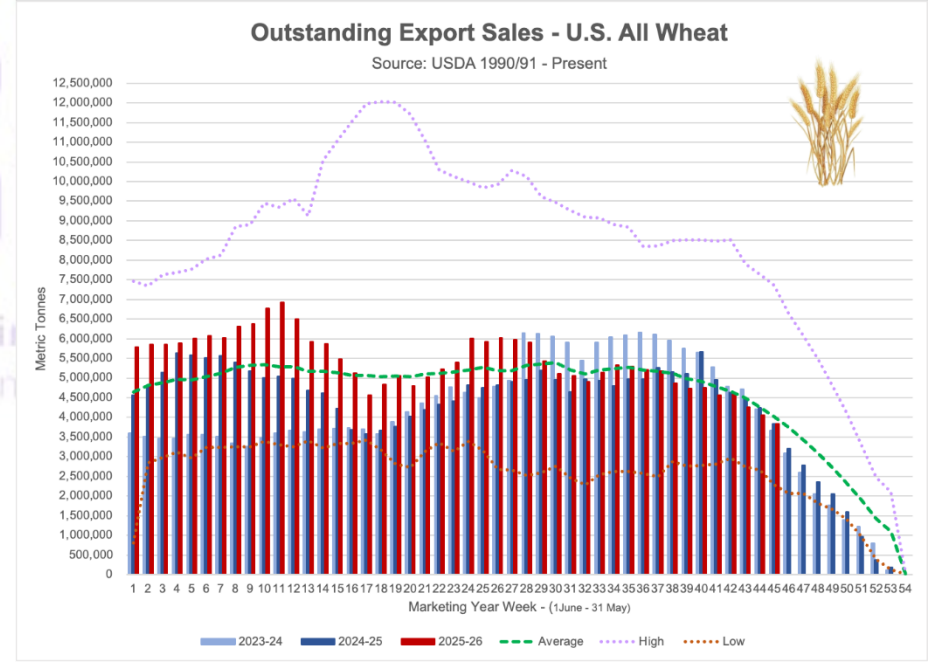
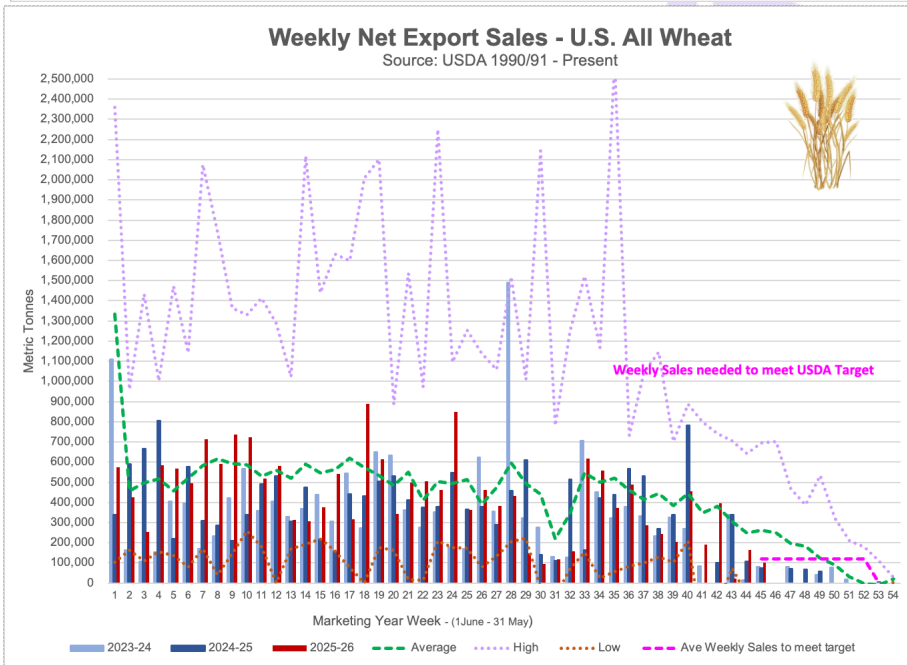
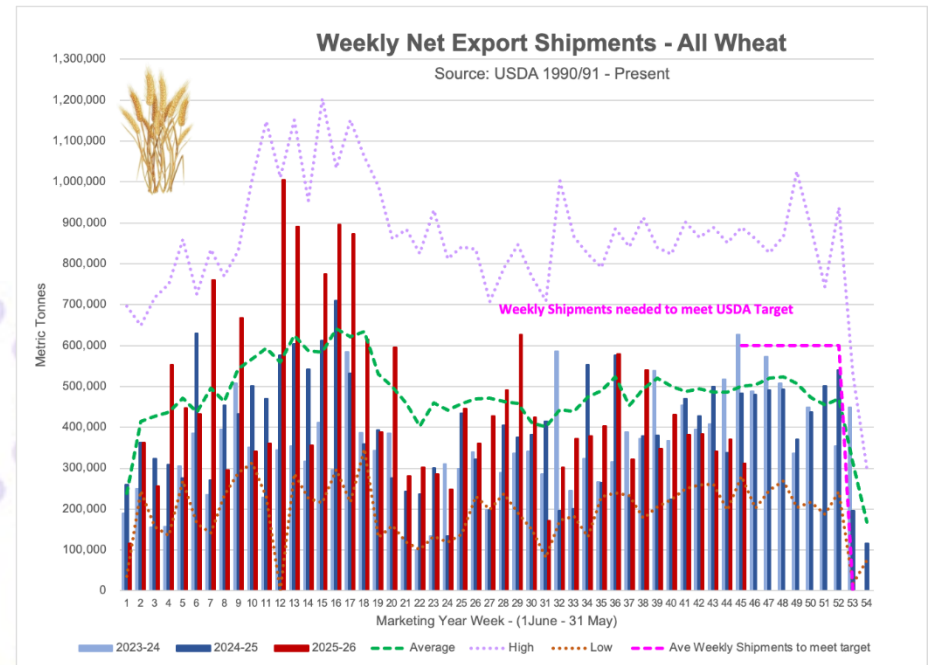
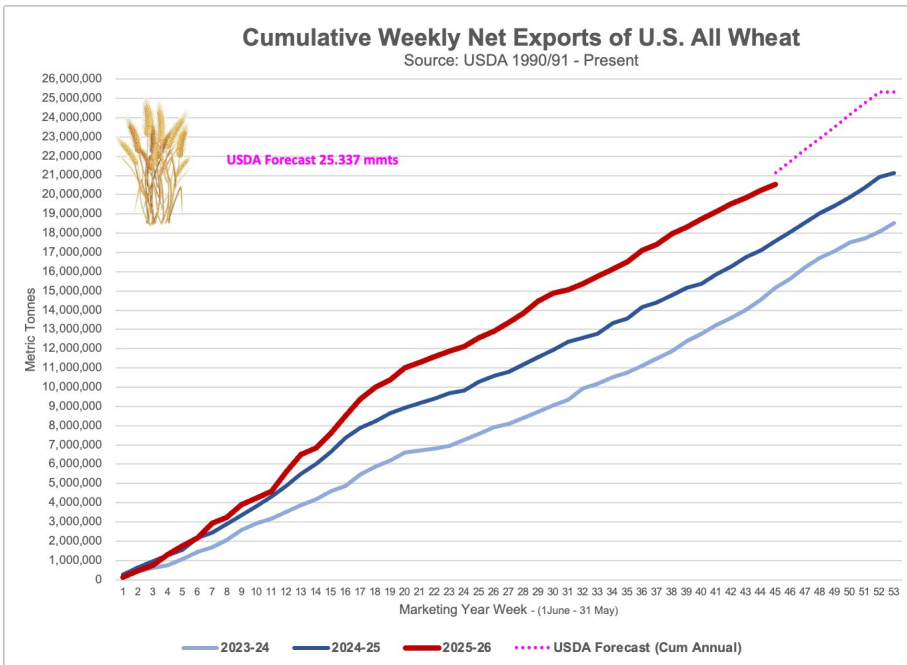
Note: The top 10 importers are based on USDA, Foreign Agricultural Service (FAS) marketing year ranking reports for marketing year (MY) 2024/25 (June 1 – May 31). "Total commitments" = cumulative exports (shipped) + outstanding sales (unshipped), from FAS weekly export sales report, or export sales query. Total commitments' change (net sales) from prior week could include revisions from previous week's outstanding sales or accumulated sales. In rightmost column, "Exports" = accumulated exports (as defined in FAS marketing year ranking reports). mt = metric ton; yr. = year; avg. = average; YTD = year to date; "-" = not applicable.

Source: USDA, Foreign Agricultural Service.

Exports of 123,200 mts--a marketing-year high--were up noticeably from the previous week and from the prior 4-week average. The destinations were primarily to Colombia (61,800 mts), Haiti (14,800 mts), Japan (13,900 mts), El Salvador (12,000 mts), and Mexico (11,200 mts).

Source: USDA FAS - <https://apps.fas.usda.gov/esrqs#/reports/weeklyexportsalesreportdetail>

International Grains Program
Kansas State University



COARSE GRAINS

Corn: Net sales of 1,400,600 mts for 2025/2026 were up 3% from the previous week and 14% from the prior 4-week average. Increases primarily for Japan (339,400 mts, including 83,100 mts switched from unknown destinations and decreases of 10,600 mts), South Korea (333,100 mts, including 65,000 mts switched from unknown destinations and decreases of 1,900 mts), Mexico (168,400 mts, including decreases of 14,300 mts), Costa Rica (114,300 mts, including 27,900 mts switched from unknown destinations and decreases of 1,200 mts), and Spain (113,800 mts, including 125,000 mts switched from unknown destinations and decreases of 11,300 mts), were offset by reductions for unknown destinations (98,000 mts) and Venezuela (12,000 mts). Total net sales of 56,500 mts for 2026/2027 were for Mexico. Exports of 1,558,700 mts were down 15% from the previous week and 14% from the prior 4-week average. The destinations were primarily to Mexico (469,900 mts), Colombia (181,100 mts), Spain (178,800 mts), South Korea (137,000 mts), and Japan (132,900 mts).

Barley: No net sales for 2025/2026 were reported for the week. Exports of 800 mts were to Canada (400 mts) and Japan (400 mts).

Sorghum: Net sales of 82,900 mts for 2025/2026 were down 27% from the previous week, but up 37% from the prior 4-week average. Increases reported for China (214,500 mts, including 132,000 mts switched from unknown destinations) and Mexico (400 mts), were offset by reductions for unknown destinations (132,000 mts).

Exports of 205,100 mts were up noticeably from the previous week and up 29% from the prior 4-week average. The destinations were to China (204,700 mts) and Mexico (400 mts).

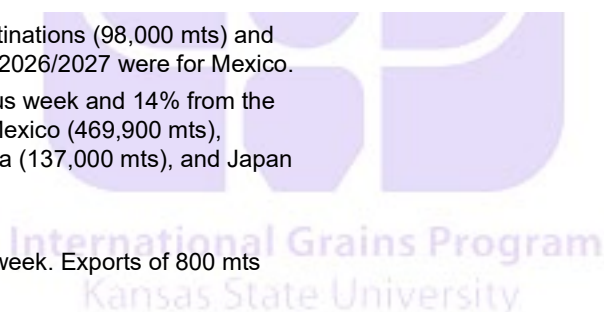
Source: USDA FAS - <https://apps.fas.usda.gov/esrqs/#/reports/weeklyexportsalesreportdetail>

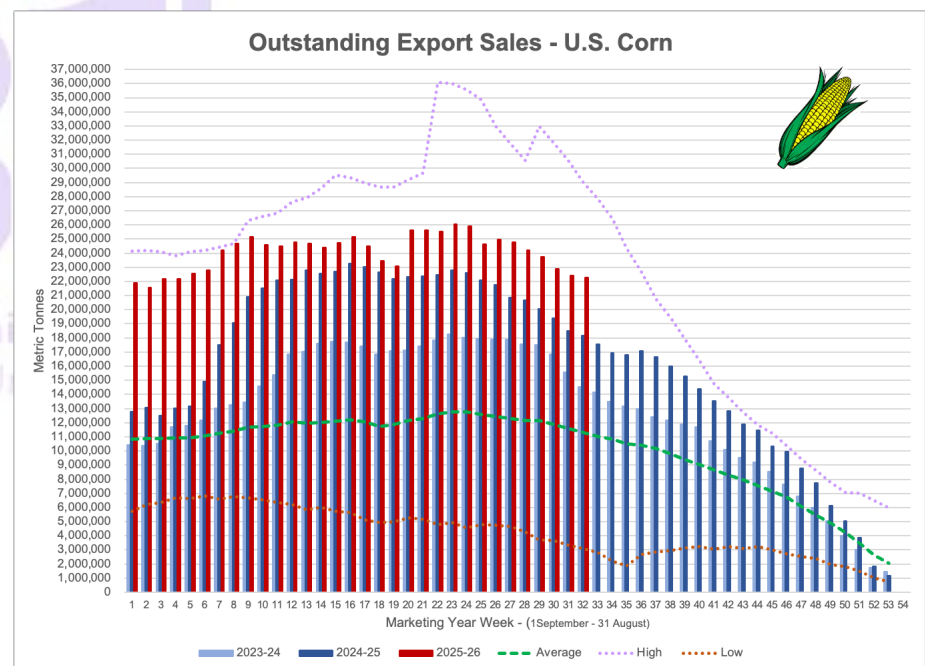
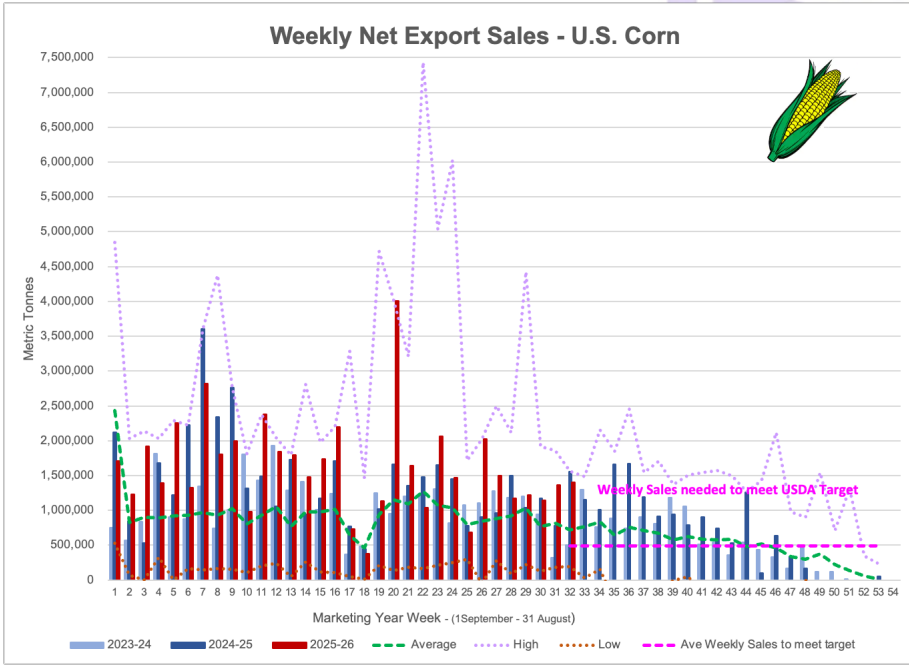
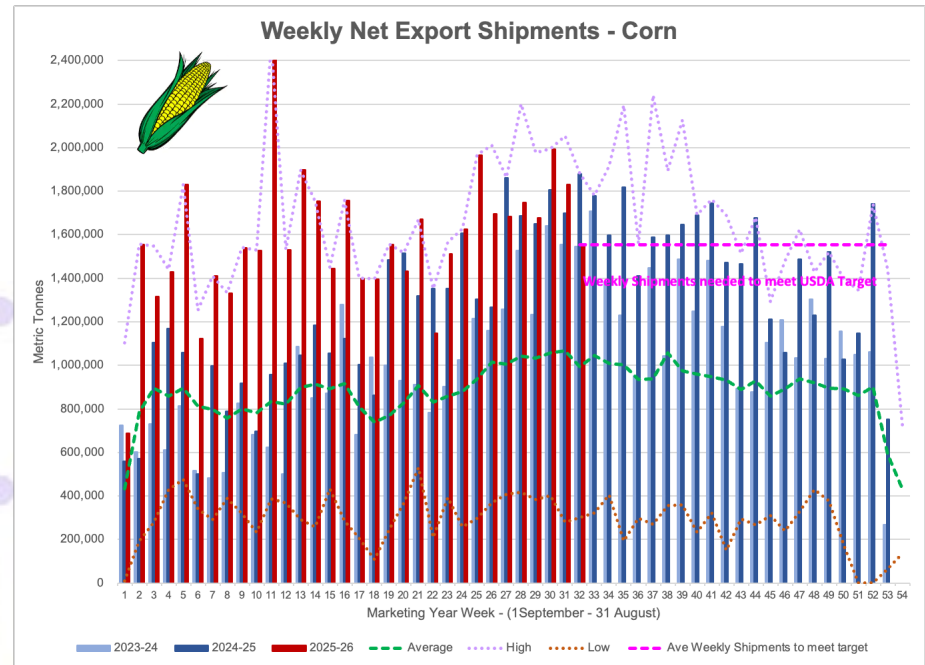
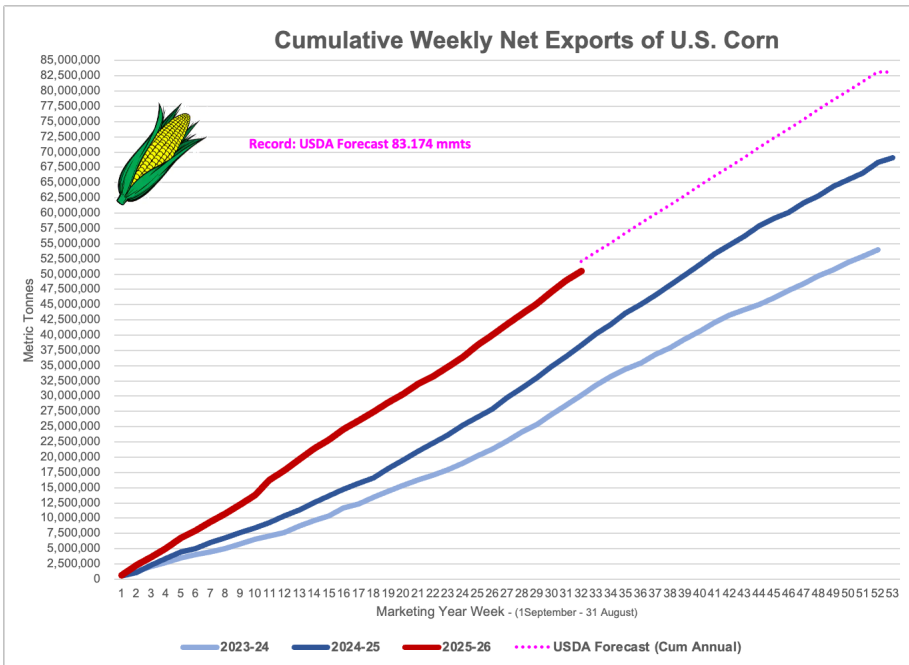
Table 15. Top 5 importers of U.S. corn

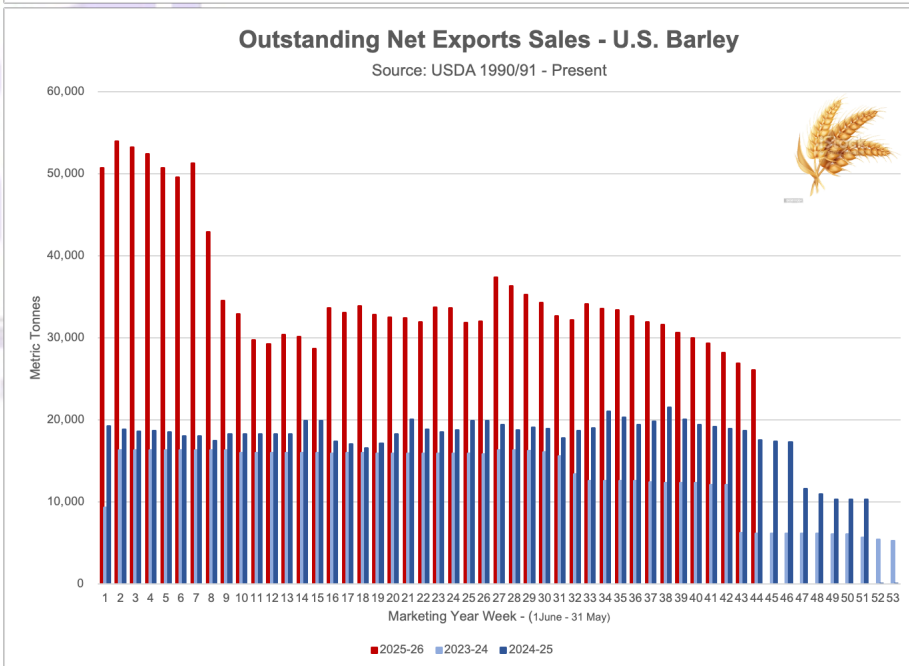
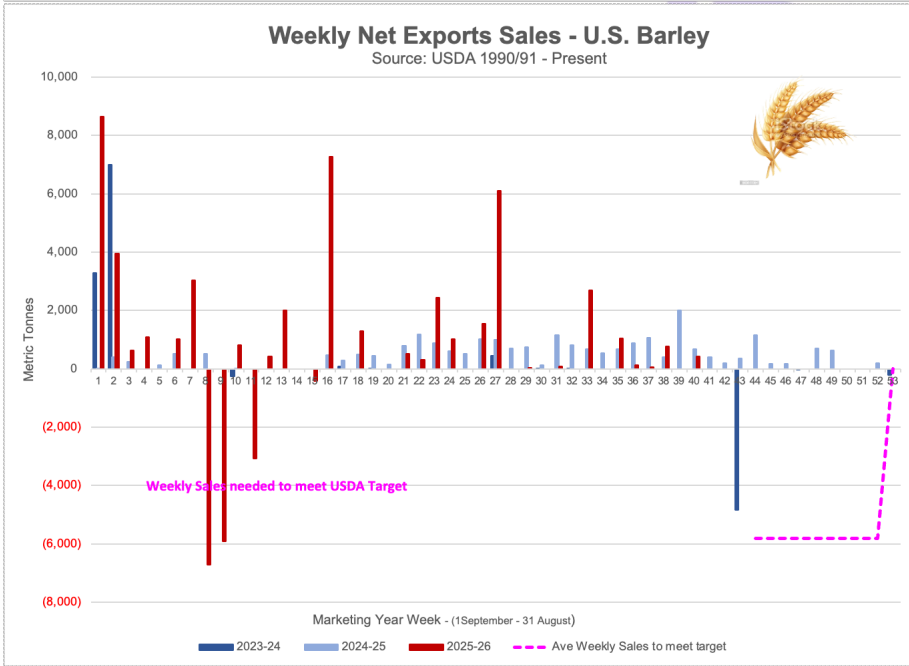
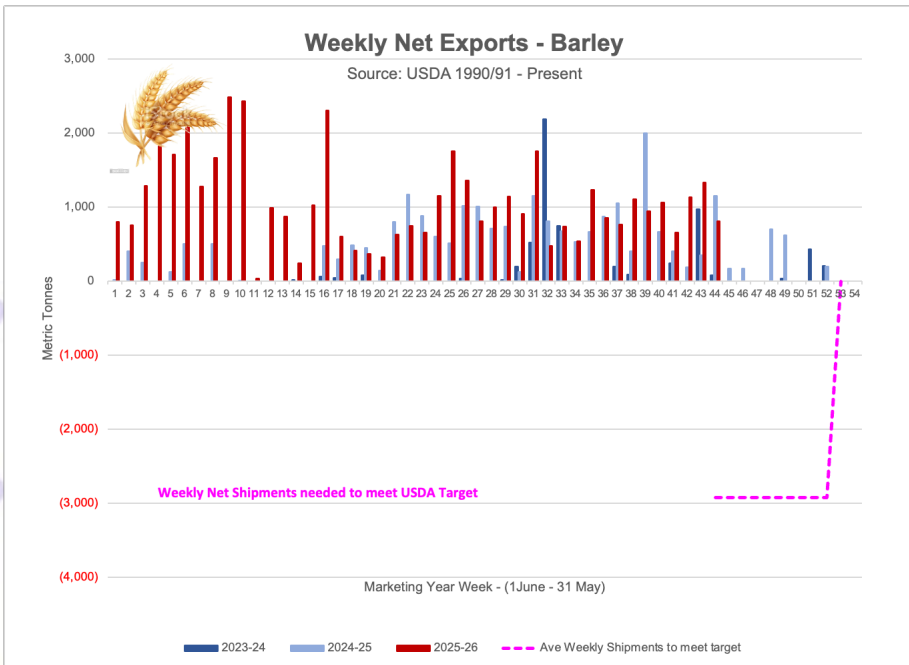
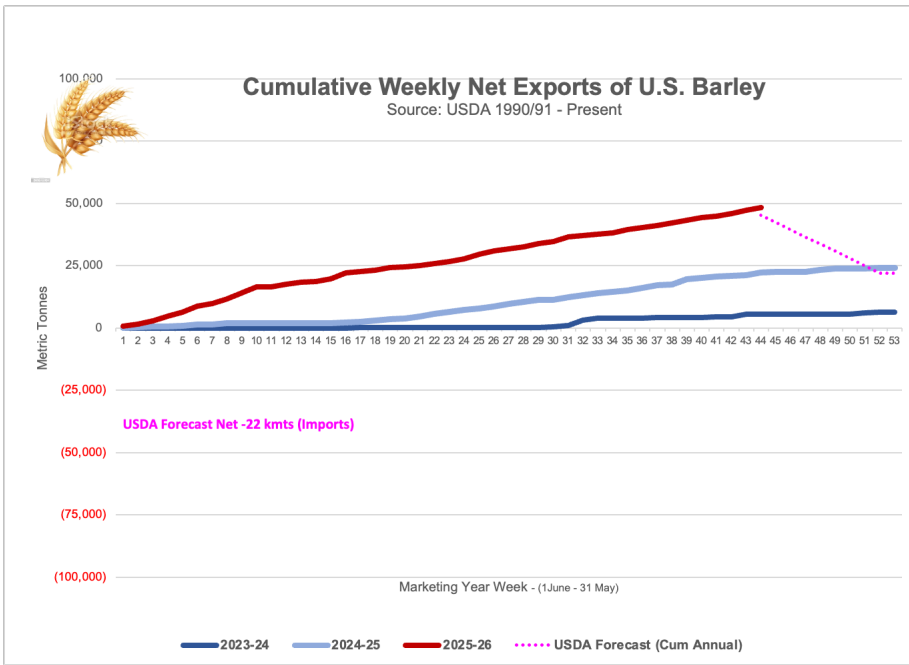
| For the week ending 4/9/2026 | Total commitments (1,000 mt) | | % change current MY from last MY | Exports 3-year average 2022-24 (1,000 mt) |
|--|------------------------------|----------------|----------------------------------|---|
| | YTD MY 2025/26 | YTD MY 2024/25 | | |
| Mexico | 21,374 | 19,684 | 9 | 19,839 |
| Japan | 12,507 | 9,463 | 32 | 10,478 |
| Colombia | 6,032 | 5,794 | 4 | 5,493 |
| China | 0 | 33 | -100 | 3,461 |
| Korea | 7,205 | 4,169 | 73 | 3,127 |
| Top 5 importers | 39,913 | 34,973 | 14 | 39,272 |
| Total U.S. corn export sales | 72,787 | 56,222 | 29 | 54,276 |
| % of YTD current month's export projection | 87% | 77% | - | - |
| Change from prior week | 1,401 | 1,562 | - | - |
| Top 5 importers' share of U.S. corn export sales | 55% | 62% | - | 72% |
| USDA forecast April 2026 | 83,824 | 72,597 | 15 | - |
| Corn use for ethanol USDA forecast, April 2026 | 142,240 | 138,075 | 3 | - |

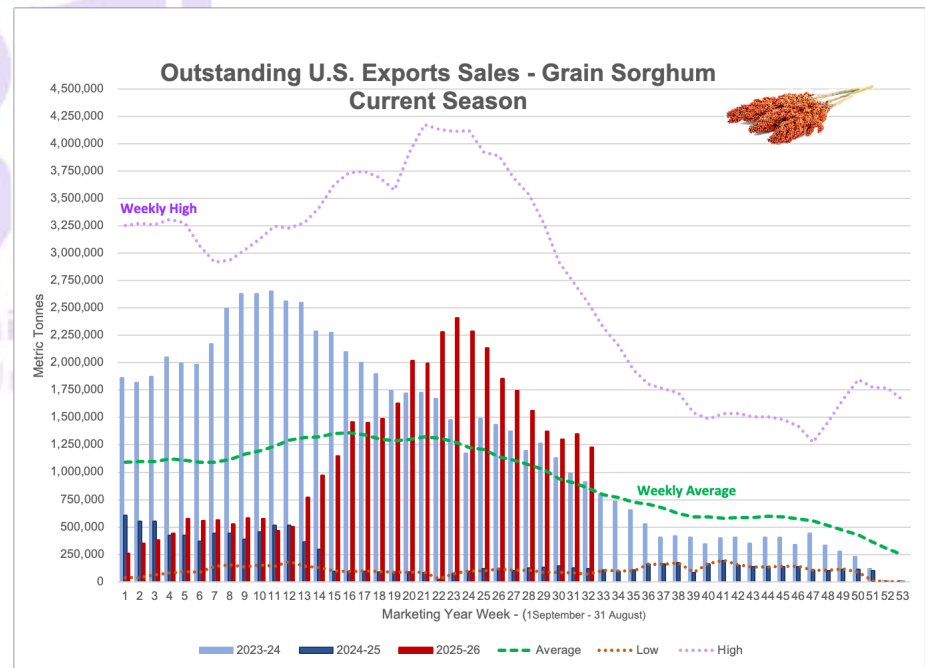
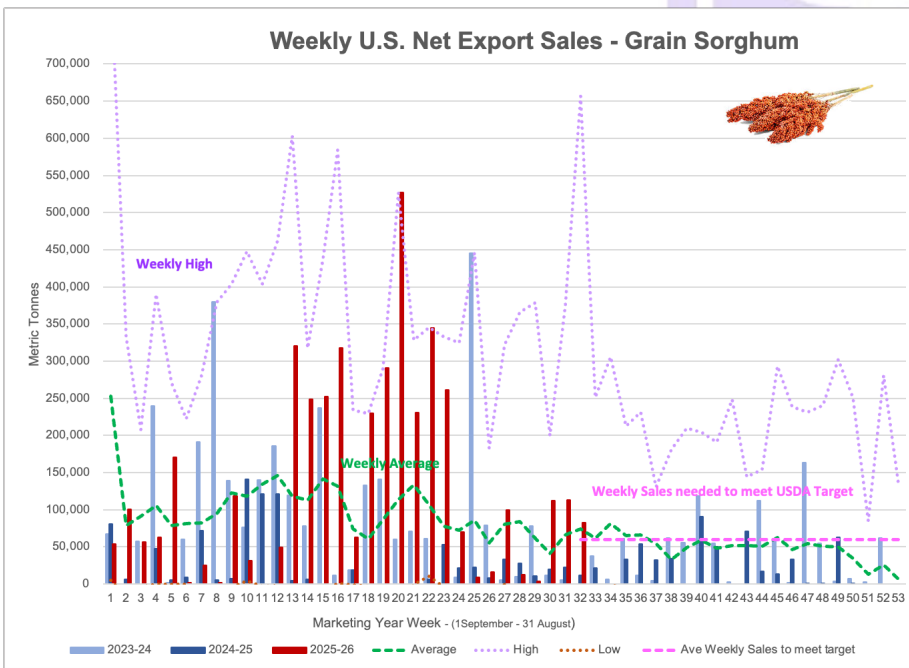
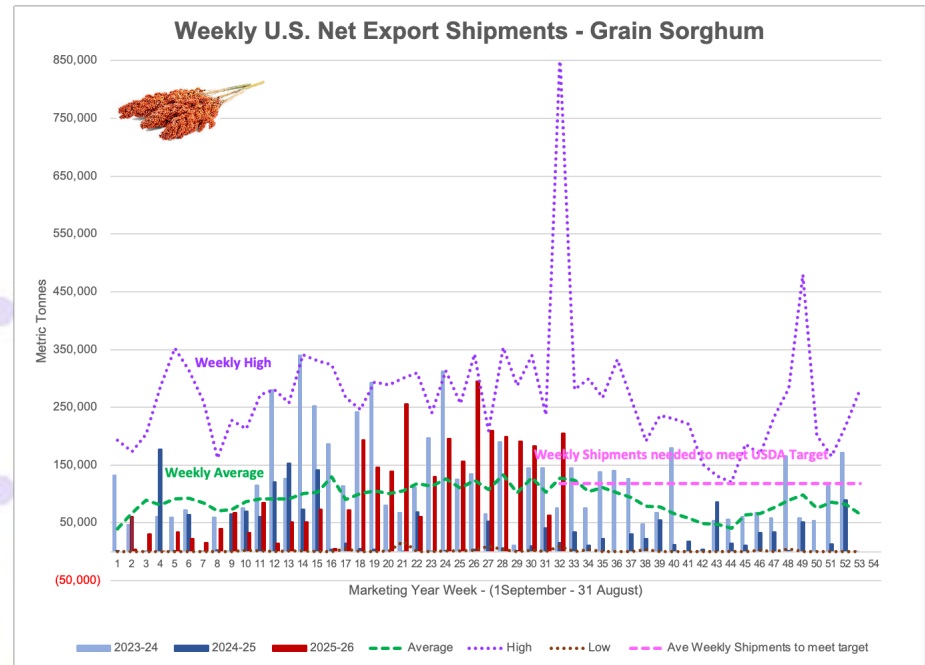
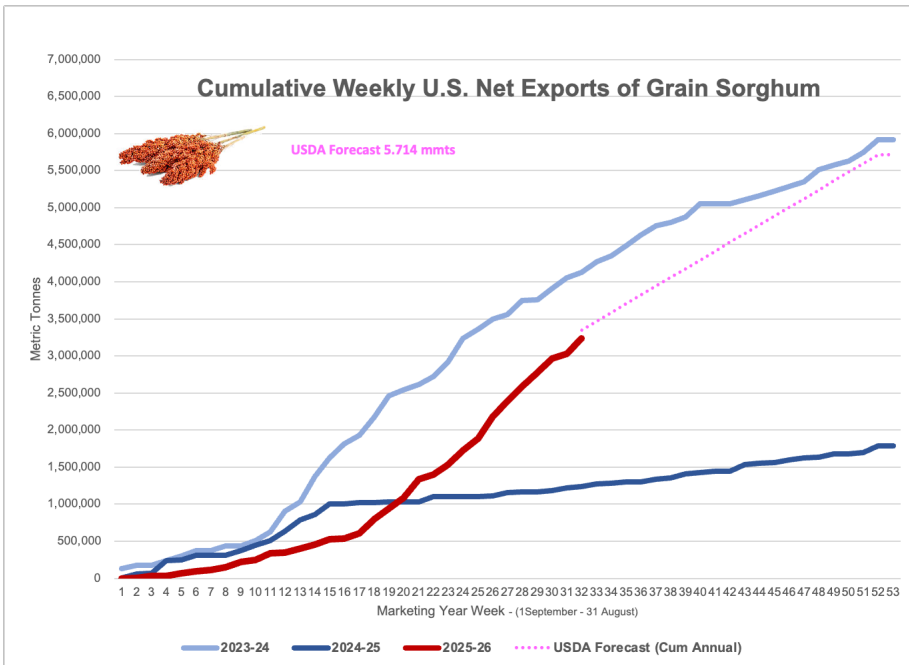
Note: The top 5 importers are based on USDA, Foreign Agricultural Service (FAS) marketing year ranking reports for marketing year (MY) 2024/25 (September 1 - August 31). "Total commitments" = cumulative exports (shipped) + outstanding sales (unshipped), from FAS weekly export sales report, or export sales query. Total commitments' change (net sales) from prior week could include revisions from previous week's outstanding sales or accumulated sales. In rightmost column, "Exports" = accumulated exports (as defined in FAS marketing year ranking reports). mt = metric ton; yr. = year; avg. = average; YTD = year to date; "-" = not applicable.

Source: USDA, Foreign Agricultural Service.









OILSEED COMPLEX

➤ Soybean Export Shipments and Sales

Soybeans: Net sales of 247,900 mts for 2025/2026--a marketing-year low--were down 16% from the previous week and 39% from the prior 4-week average. Increases primarily for Egypt (58,100 mts, including 55,000 mts switched from unknown destinations and decreases of 6,300 mts), Costa Rica (50,800 mts, including 13,000 mts switched from unknown destinations and decreases of 700 mts), Indonesia (50,700 mts, including decreases of 200 mts), Canada (26,100 mts), and Japan (20,200 mts, including 19,000 mts switched from unknown destinations), were offset by reductions for unknown destinations (31,000 mts), Mexico (400 mts), and Bangladesh (100 mts).

Exports of 818,500 mts were up 29% from the previous week, but down 8% from the prior 4-week average. The destinations were primarily to China (345,800 mts), Egypt (274,100 mts), Mexico (68,400 mts), Indonesia (31,200 mts), and Japan (24,400 mts).

Soybean Meal Export Shipments and Sales

Soybean Cake and Meal: Net sales of 254,200 mts for 2025/2026 were down 30% from the previous week and 31% from the prior 4-week average. Increases primarily for Italy (100,000 mts), the Philippines (58,100 mts, including decreases of 200 mts), Ecuador (46,500 mts, including 45,000 mts switched from unknown destinations and decreases of 22,700 mts), Mexico (41,000 mts), and Venezuela (25,000 mts), were offset by reductions for unknown destinations (46,800 mts), Canada (7,500 mts), Belgium (1,100 mts), Costa Rica (100 mts), and Panama (100 mts). Total net sales of 1,500 mts for 2026/2027 were for Canada.

Exports of 345,300 mts were down 25% from the previous week and 16% from the prior 4-week average. The destinations were primarily to the Philippines (101,500 mts), Mexico (65,200 mts), Colombia (53,500 mts), Ecuador (47,300 mts), and the Dominican Republic (23,200 mts).

Table 16. Top 5 importers of U.S. soybeans

| For the week ending 4/9/2026 | Total commitments (1,000 mt) | | % change current MY from last MY | Exports 3-year average 2022-24 (1,000 mt) |
|---|------------------------------|----------------|----------------------------------|---|
| | YTD MY 2025/26 | YTD MY 2024/25 | | |
| China | 11,524 | 22,336 | -48 | 26,078 |
| Mexico | 4,615 | 4,372 | 6 | 4,762 |
| Japan | 1,826 | 1,683 | 8 | 2,107 |
| Egypt | 4,331 | 2,758 | 57 | 2,098 |
| Indonesia | 1,862 | 1,470 | 27 | 1,997 |
| Top 5 importers | 24,158 | 32,620 | -26 | 37,042 |
| Total U.S. soybean export sales | 38,153 | 46,272 | -18 | 48,941 |
| % of YTD current month's export projection | 91% | 90% | - | - |
| Change from prior week | 248 | 485 | - | - |
| Top 5 importers' share of U.S. soybean export sales | 63% | 70% | - | 76% |
| USDA forecast, April 2026 | 41,912 | 51,220 | -18 | - |

Note: The top 5 importers are based on USDA, Foreign Agricultural Service (FAS) marketing year ranking reports for marketing year (MY) 2024/25 (September 1 - August 31). "Total commitments" = cumulative exports (shipped) + outstanding sales (unshipped), from FAS weekly export sales report, or export sales query. Total commitments' change (net sales) from prior week could include revisions from previous week's outstanding sales or accumulated sales. In rightmost column, "Exports" = accumulated exports (as defined in FAS marketing year ranking reports). mt = metric ton; yr. = year; avg. = average; YTD = year to date; "-" = not applicable. Source: USDA, Foreign Agricultural Service.

➤ Soybean Oil Export Shipments and Sales

Soybean Oil: Net sales of 1,100 mts for 2025/2026 reported for Mexico (1,800 mts), were offset by reductions for Canada (700 mts).

Exports of 1,600 mts were up 11% from the previous week, but down 86% from the prior 4-week average. The destinations were to Mexico (1,200 mts) and Canada (300 mts).

Source: USDA FAS - <https://apps.fas.usda.gov/esrqs/#/reports/weeklyexportsalesreportdetail>

