



# IGP Export Pace

## Wheat, Corn, Grain Sorghum, and Soybean Complex

### 2<sup>nd</sup> January 2026

Department of Grain & Food Science,  
Kansas State University

**KSU Ag Manager Link:** <https://www.agmanager.info/grain-marketing/publications/us-grain-exports-and-trade>

**KSU Agriculture Today Podcast Link:** <https://agtodayksu.libsyn.com/timeliness-of-corn-and-soybean-plantingworld-grain-supply-and-demand>

**IGP Market Information:** <http://www.dtnigp.com/index.cfm>

**USDA Transportation Report:** <https://www.ams.usda.gov/services/transportation-analysis/gtr>

**USDA FAS Historical Grain Shipments:** <https://apps.fas.usda.gov/export-sales/wkHistData.htm>,  
<https://apps.fas.usda.gov/export-sales/complete.htm>

## Contents

<b>U.S. EXPORT ACTIVITY</b> .....	1
➤ <b>Export Sales</b> .....	1
➤ <b>Export Inspections</b> .....	1
➤ <b>Vessel Loadings</b> .....	2
➤ <b>BARGE MOVEMENTS</b> .....	4
<b>CEREAL GRAINS</b> .....	6
<b>COARSE GRAINS</b> .....	7
<b>OILSEED COMPLEX</b> .....	11

- This summary based on reports for the 1<sup>st</sup> of Jan. 2026
- Outstanding Export Sales (Unshipped Balances) on the 26<sup>th</sup> of Dec. 2025
- Export Shipments in Current Marketing Year
- Daily Sales Reported for the 1<sup>st</sup> of Jan. 2026

## U.S. EXPORT ACTIVITY

### ➤ Export Sales

For the week ending the 18<sup>th</sup> of December, unshipped balances of corn, soybeans, and wheat for marketing year (MY) 2025/26 totaled 43.11 million metric tons (mmts), unchanged from last week and up 4% from the same time last year.

- Net wheat export sales were 0.15 mmts, down 66% from last week.

- Net corn export sales for MY 2025/26 were 2.20 mmts, up 26% from last week.
- Net soybean export sales were 1.06 mmts, down 56% from last week.

### ➤ Export Inspections

GRAINS INSPECTED AND/OR WEIGHED FOR EXPORT  
REPORTED IN WEEK ENDING DEC 25, 2025  
-- METRIC TONS --

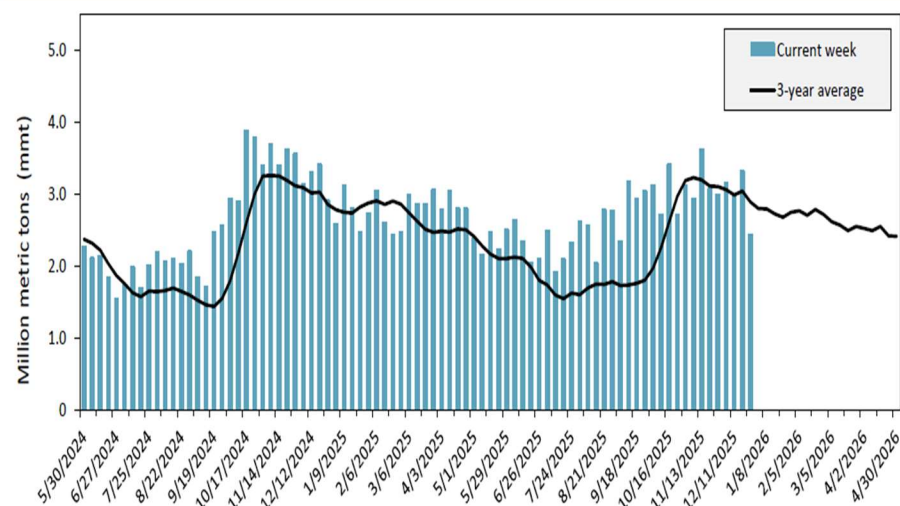
GRAIN	WEEK ENDING			CURRENT	PREVIOUS
	12/25/2025	12/18/2025	12/26/2024	MARKET YEAR TO DATE	MARKET YEAR TO DATE
BARLEY	0	244	699	5,873	8,608
CORN	1,301,211	1,747,372	907,565	25,571,609	15,388,976
FLAXSEED	0	0	0	336	264
MIXED	0	0	49	0	122
OATS	0	299	0	4,788	148
RYE	0	0	0	0	0
SORGHUM	69,372	5,167	14,573	616,992	1,372,810
SOYBEANS	750,312	929,365	1,643,692	15,396,334	28,671,623
SUNFLOWER	0	0	0	0	0
WHEAT	302,096	635,626	339,492	15,063,945	12,345,173
Total	2,422,991	3,318,073	2,906,070	56,659,877	57,787,724

CROP MARKETING YEARS BEGIN JUNE 1 FOR WHEAT, RYE, OATS, BARLEY AND FLAXSEED; SEPTEMBER 1 FOR CORN, SORGHUM, SOYBEANS AND SUNFLOWER SEEDS. INCLUDES WATERWAY SHIPMENTS TO CANADA.

Source: [https://www.ams.usda.gov/mnreports/wa\\_gr101.txt](https://www.ams.usda.gov/mnreports/wa_gr101.txt)

## ➤ Vessel Loadings

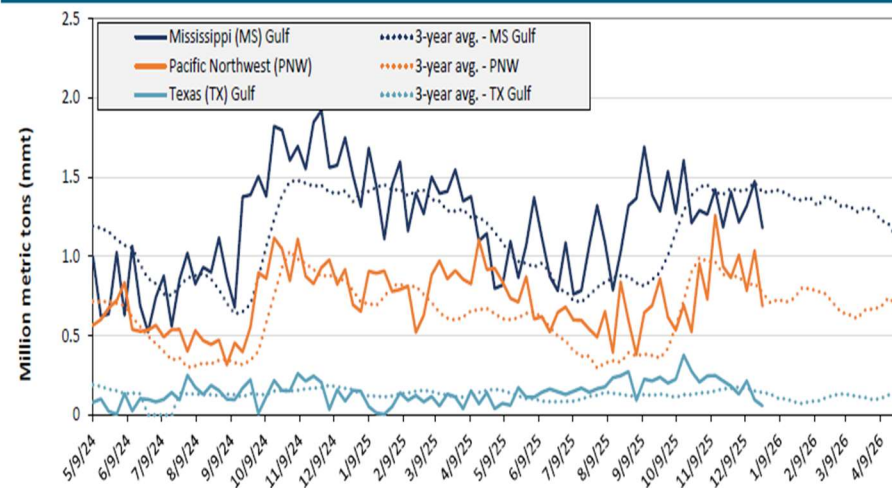
Figure 17. U.S. grain inspected for export (wheat, corn, and soybeans)



Note: 3-year average consists of 4-week running average.

Source: USDA, Federal Grain Inspection Service.

Figure 18. U.S. grain inspections for U.S. Gulf and PNW (wheat, corn, and soybeans)



Source: USDA, Federal Grain Inspection Service.

Table 14. U.S. export balances and cumulative exports (1,000 metric tons)

Grain Exports		Wheat						Corn	Soybeans	Total
		Hard red winter (HRW)	Soft red winter (SRW)	Hard red spring (HRS)	Soft white wheat (SWW)	Durum	All wheat			
Current unshipped (outstanding) export sales	For the week ending 12/18/2025	1,713	837	1,373	1,372	143	5,437	25,163	12,506	43,106
	This week year ago	1,192	851	1,657	1,368	130	5,198	23,279	12,940	41,417
	Last 4 wks. as % of same period 2024/25	145	104	86	121	119	112	106	88	101
Current shipped (cumulative) exports sales	2025/26 YTD	5,594	1,956	3,647	3,012	256	14,465	24,618	14,327	53,410
	2024/25YTD	2,758	1,723	3,812	3,087	186	11,566	14,745	26,607	52,918
	YTD 2025/26 as % of 2024/25	203	114	96	98	137	125	167	54	101
	Total 2024/25	5,377	3,106	6,560	5,730	335	21,107	69,081	50,106	140,295
	Total 2023/24	3,535	4,260	6,314	3,906	526	18,540	54,277	44,510	117,328

Note: The marketing year for wheat is June 1 to May 31 and, for corn and soybeans, September 1 to August 31. YTD = year-to-date; wks. = weeks.

Source: USDA, Foreign Agricultural Service.

## Ocean

For the week ending the 25<sup>th</sup> of December, 29 oceangoing grain vessels were loaded in the Gulf—3% fewer than the same period last year. Within the next 10 days (starting the 26<sup>th</sup> of December), 40 vessels were expected to be loaded—17% fewer than from the same period last year.

## Barge

For the week ending the 27<sup>th</sup> of December, barged grain movements totaled 404,341 tons. This was 20% less than the previous week and down 57% from the same period last year.

For the week ending the 27<sup>th</sup> of December, 270 grain barges moved down river—47 fewer than last week. There were 513 grain barges unloaded in the New Orleans region, 41% fewer than last week.

## Rail

U.S. Class I railroads originated 28,750 grain carloads during the week ending December 20. This was a 1% increase from the previous week, 8% more than last year, and 10% more than the 3-year average.

Average January shuttle secondary railcar bids/offers (per car) were \$863 above tariff for the week ending December 25. This was \$202 less than last week and \$756 more than this week last year. Average non-shuttle secondary railcar bids/offers per car were \$38 above tariff. This was \$29 less than last week and \$71 lower than this week last year.

**Table 18. Grain inspections for export by U.S. port region (1,000 metric tons)**

Port regions	Commodity	For the week ending 12/25/2025	Previous week*	Current week as % of previous	2025 YTD*	2024 YTD*	2025 YTD as % of 2024 YTD	Last 4-weeks as % of:		2024 total*
								Last year	Prior 3-yr. avg.	
Pacific Northwest	Corn	405	625	65	23,622	13,764	172	200	271	13,987
	Soybeans	67	59	114	2,823	10,238	28	14	14	10,445
	Wheat	215	354	61	12,171	11,276	108	156	159	11,453
	All grain	687	1,037	66	38,820	36,578	106	106	114	37,186
Mississippi Gulf	Corn	620	752	82	36,738	26,911	137	129	151	27,407
	Soybeans	510	659	77	22,714	29,116	78	54	61	29,741
	Wheat	50	64	78	3,959	4,502	88	139	172	4,523
	All grain	1,180	1,475	80	63,451	60,647	105	80	92	61,789
Texas Gulf	Corn	0	0	n/a	590	566	104	99	55	570
	Soybeans	0	0	n/a	1,374	741	185	83	145	741
	Wheat	0	96	0	4,657	1,795	259	198	194	1,940
	All grain	57	96	60	7,569	6,816	111	114	88	6,965
Interior	Corn	231	335	69	15,228	13,271	115	158	153	13,463
	Soybeans	134	192	70	7,570	7,950	95	84	98	8,059
	Wheat	8	51	16	3,026	2,933	103	96	107	2,989
	All grain	396	583	68	26,345	24,431	108	118	126	24,791
Great Lakes	Corn	40	20	206	414	251	165	211	538	271
	Soybeans	0	0	n/a	63	136	46	2	1	136
	Wheat	29	71	40	434	633	69	99	90	653
	All grain	69	91	76	911	1,020	89	118	113	1,060
Atlantic	Corn	5	16	29	602	405	149	189	203	410
	Soybeans	39	20	197	1,020	1,210	84	69	68	1,272
	Wheat	0	0	n/a	81	73	112	n/a	n/a	73
	All grain	43	36	121	1,704	1,688	101	78	79	1,754
All Regions	Corn	1,301	1,747	74	77,196	55,167	140	155	181	56,109
	Soybeans	750	929	81	35,816	49,862	72	51	56	50,865
	Wheat	302	636	48	24,329	21,211	115	143	148	21,631
	All grain	2,434	3,318	73	139,052	131,650	106	94	103	134,016

\*Note: Data include revisions from prior weeks; "All grain" includes corn, soybeans, wheat, sorghum, oats, barley, rye, sunflower, flaxseed, and mixed grains; "All regions" includes listed regions and other minor regions not listed; YTD = year-to-date; n/a = not available or no change. A "-" in the table indicates a percentage change with a near-zero denominator for the period.  
Source: USDA, Federal Grain Inspection Service.

Week ending 12/25/25 inspections (mmt):				
MS Gulf: 1.18				
PNW: 0.69				
TX Gulf: 0.06				
Percent change from:	MS Gulf	TX Gulf	U.S. Gulf	PNW
Last week	down 20	down 40	down 21	down 34
Last year (same 7 days)	down 32	down 64	down 35	down 21
3-year average (4-week moving average)	down 16	down 59	down 20	down 11



**Table 19. Weekly port region grain ocean vessel activity (number of vessels)**

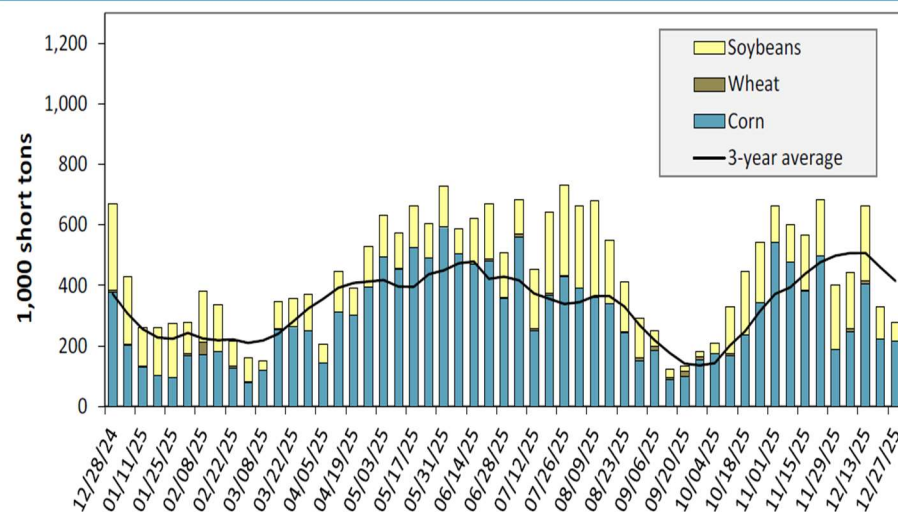
Date	Gulf			Pacific Northwest
	In port	Loaded 7-days	Due next 10-days	In port
12/25/2025	32	29	40	n/a
12/18/2025	29	30	42	12
2024 range	(11...45)	(18...38)	(29...61)	(3...25)
2024 average	28	28	45	13

Note: The data are voluntarily submitted and may not be complete.

Source: USDA, Agricultural Marketing Service.

## ➤ **BARGE MOVEMENTS**

**Figure 12. Barge movements on the Mississippi River (Locks 27-Granite City, IL)**



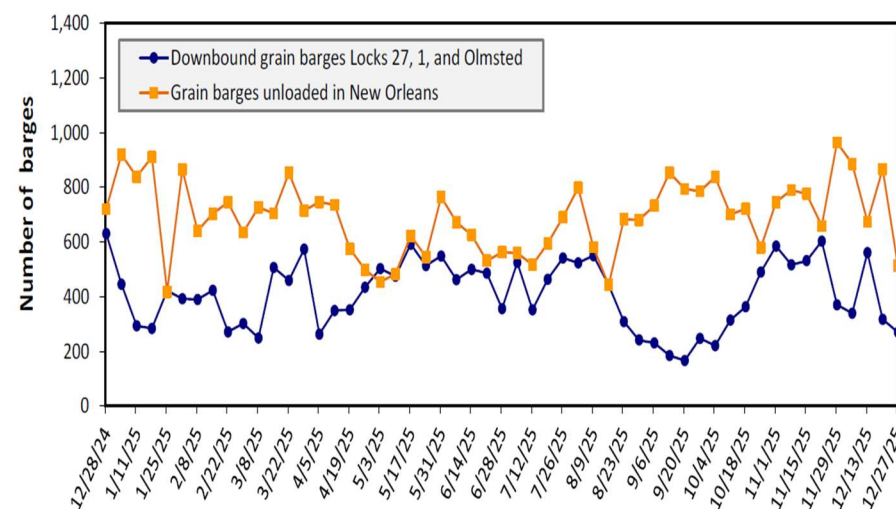
Note: The 3-year average is a 4-week moving average.

Source: U.S. Army Corps of Engineers.

- For the week ending the 27<sup>th</sup> of December, barged grain movements totaled 404,341 tons. This was 20% less than the previous week and down 57% from the same period last year.
- For the week ending the 27<sup>th</sup> of December, 270 grain barges moved down river—47 fewer than last week.

- There were 513 grain barges unloaded in the New Orleans region, 41% fewer than last week.

**Figure 14. Grain barges for export in New Orleans region**



Note: Olmsted = Olmsted Locks and Dam.

Source: U.S. Army Corps of Engineers and USDA, Agricultural Marketing Service.

**Table 10. Barged grain movements (1,000 tons)**

For the week ending 12/27/2025	Corn	Wheat	Soybeans	Other	Total
Mississippi River (Rock Island, IL (L15))	0	0	0	0	0
Mississippi River (Winfield, MO (L25))	93	0	22	0	115
Mississippi River (Alton, IL (L26))	206	0	62	0	268
Mississippi River (Granite City, IL (L27))	216	0	63	0	279
Illinois River (La Grange)	168	0	72	0	241
Ohio River (Olmsted)	34	2	55	0	90
Arkansas River (L1)	0	3	32	0	35
Weekly total - 2025	250	4	150	0	404
Weekly total - 2024	500	20	410	15	945
2025 YTD	19,552	1,247	11,039	166	32,003
2024 YTD	15,251	1,564	12,598	214	29,626
2025 as % of 2024 YTD	128	80	88	77	108
Last 4 weeks as % of 2024	81	79	58	37	70
Total 2024	15,251	1,564	12,598	214	29,626

Note: "Other" refers to oats, barley, sorghum, and rye. Total may not add up due to rounding. YTD = year to date. Weekly total, YTD, and calendar year total include Mississippi River lock 27, Ohio River Olmsted lock, and Arkansas Lock 1. "L" (as in "L15") refers to a lock, locks, or lock and dam facility.

Source: U.S. Army Corps of Engineers.

**Table 17. Top 10 importers of all U.S. wheat**

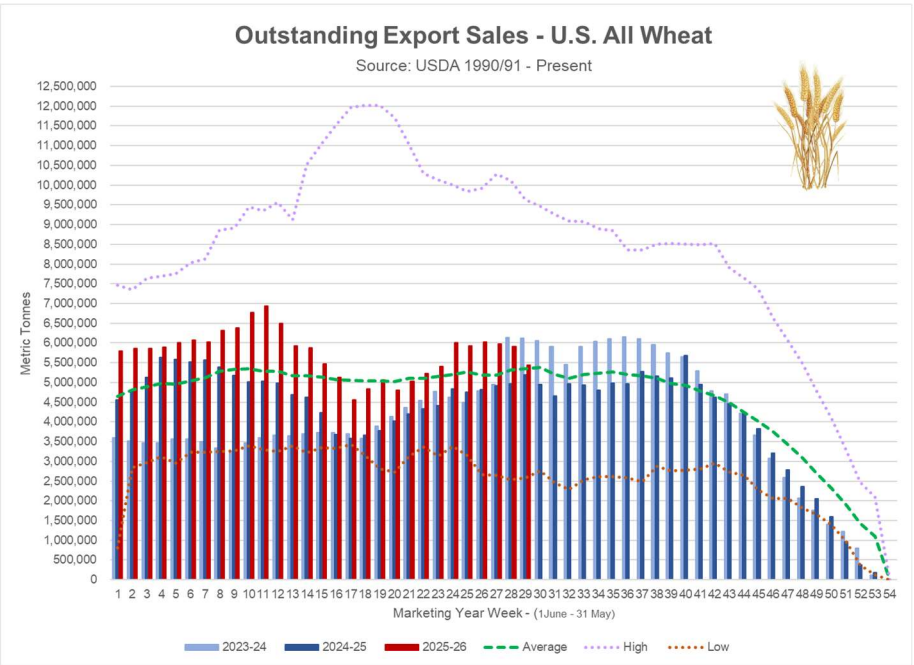
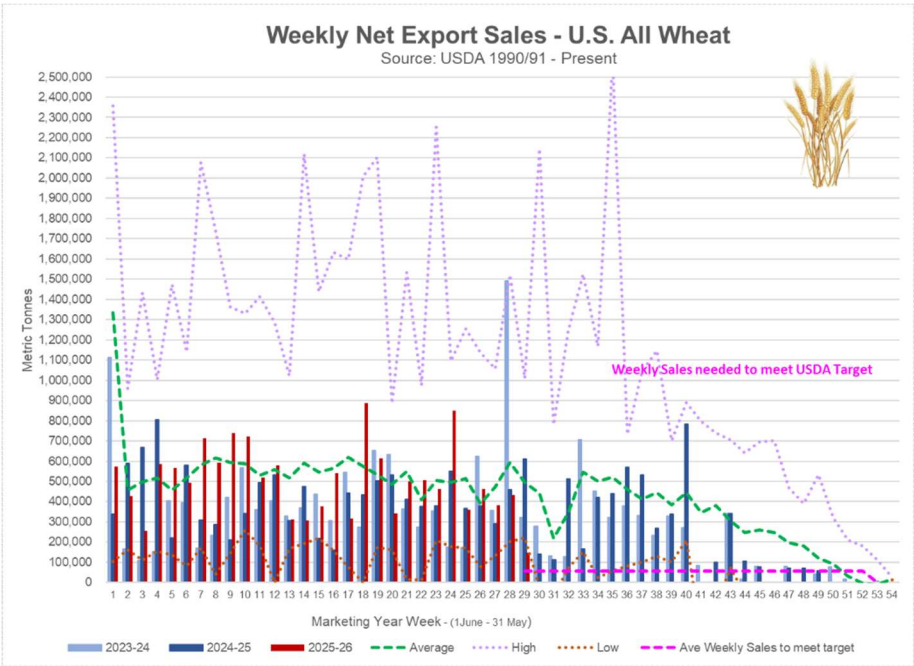
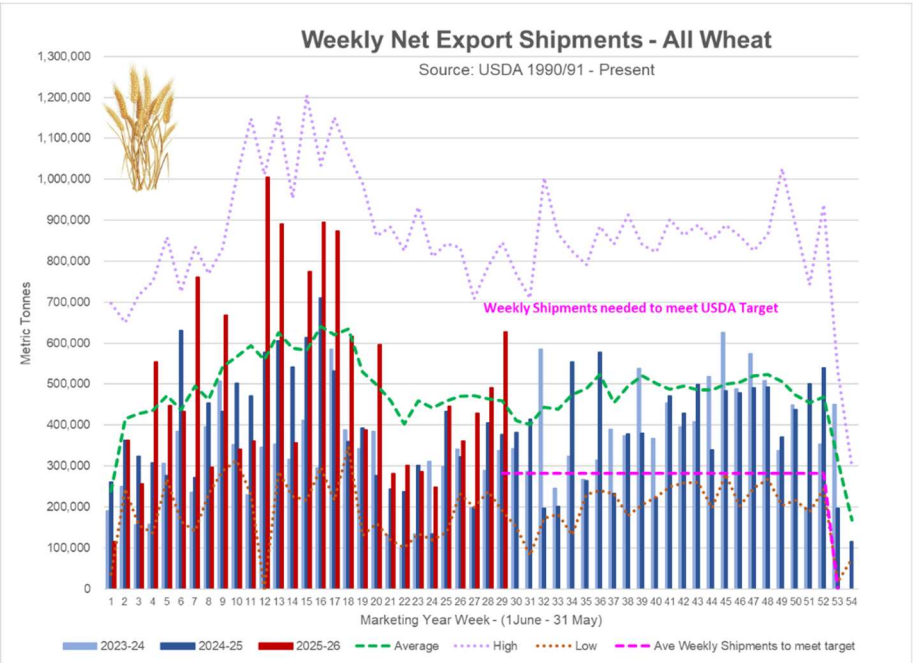
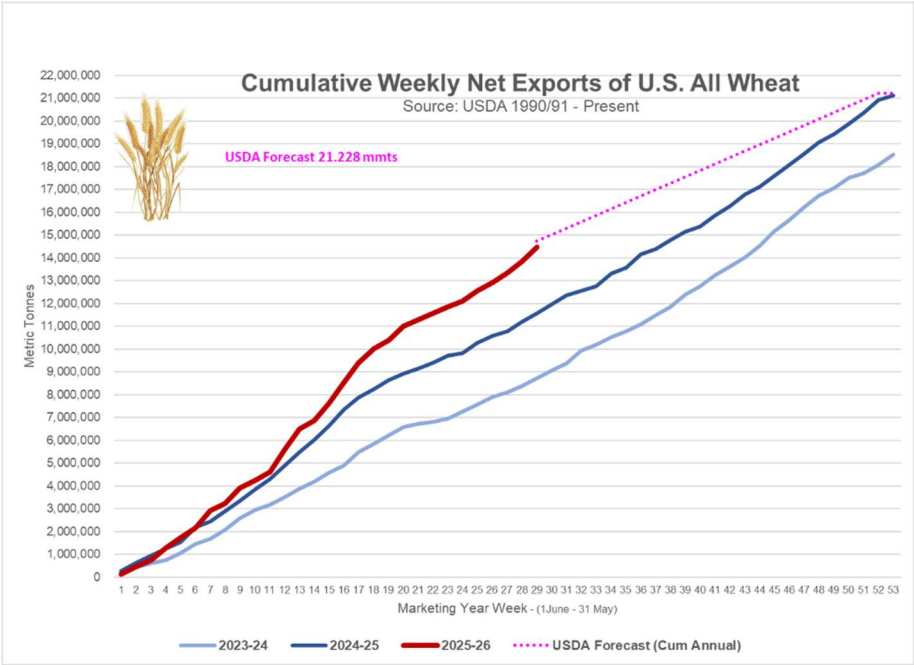
For the week ending 12/18/2025	Total commitments (1,000 mt)		% change current MY from last MY	Exports 3-year average 2022-24 (1,000 mt)
	YTD MY 2025/26	YTD MY 2024/25		
Mexico	3,359	3,151	7	3,358
Philippines	2,187	2,161	1	2,473
Japan	1,666	1,665	0	2,045
China	259	139	86	1,137
Korea	1,522	1,721	-12	1,674
Taiwan	783	730	7	935
Thailand	515	739	-30	667
Nigeria	1,220	344	254	629
Indonesia	942	639	47	518
Colombia	547	329	66	489
Top 10 importers	13,000	11,618	12	13,926
Total U.S. wheat export sales	19,902	16,764	19	19,135
% of YTD current month's export projection	81%	75%	-	-
Change from prior week	148	612	-	-
Top 10 importers' share of U.S. wheat export sales	65%	69%	-	73%
USDA forecast, December 2025	24,494	22,480	9	-

Note: The top 10 importers are based on USDA, Foreign Agricultural Service (FAS) marketing year ranking reports for marketing year (MY) 2024/25 (June 1 – May 31). "Total commitments" = cumulative exports (shipped) + outstanding sales (unshipped), from FAS weekly export sales report, or export sales query. Total commitments' change (net sales) from prior week could include revisions from previous week's outstanding sales or accumulated sales. In rightmost column, "Exports" = accumulated exports (as defined in FAS marketing year ranking reports). mt = metric ton; yr. = year; avg. = average; YTD = year to date; "-" = not applicable.

Source: USDA, Foreign Agricultural Service.

GTR 01-01-26

CEREAL GRAINS





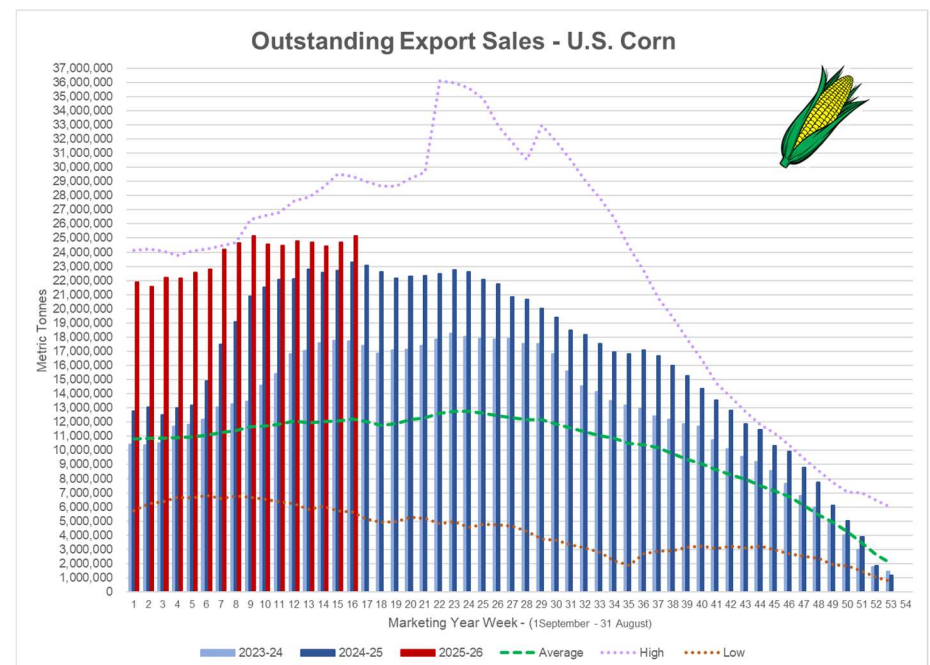
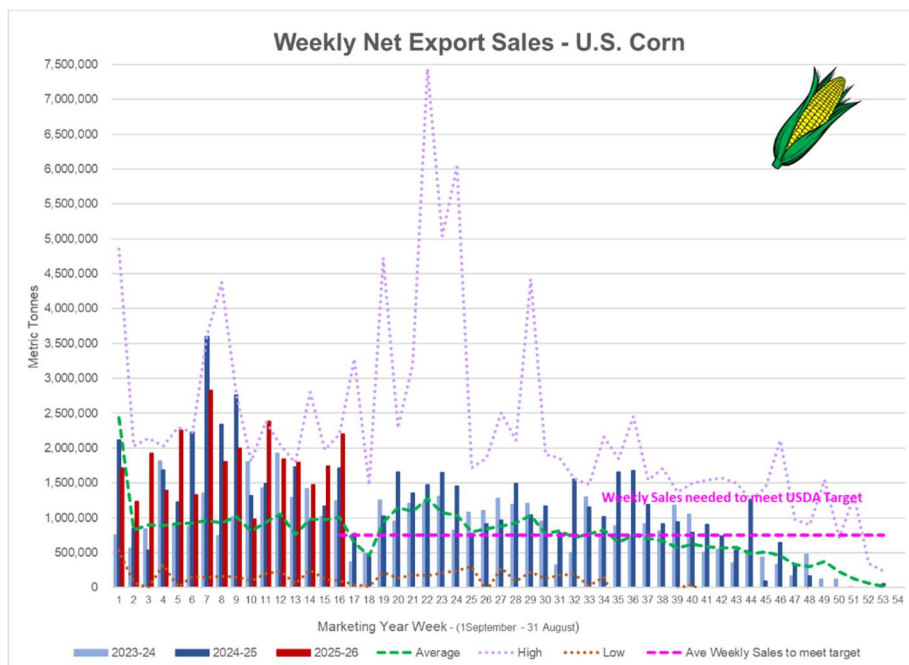
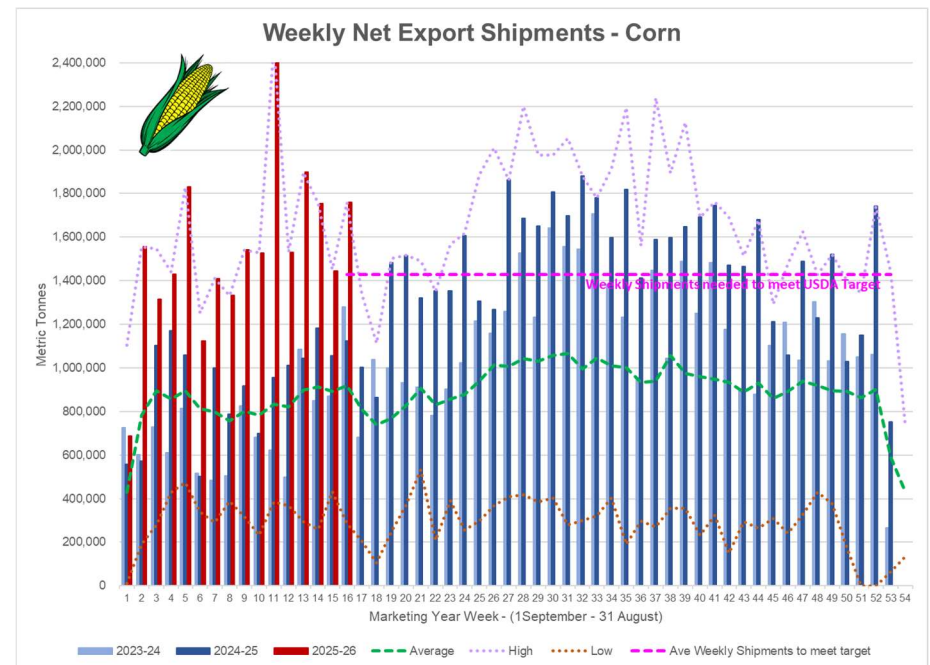
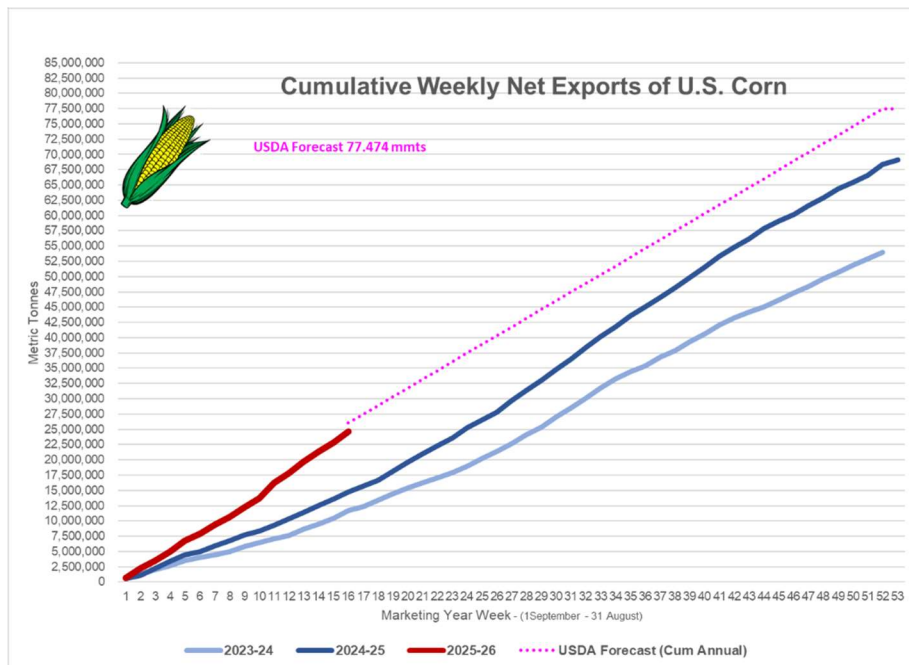
## COARSE GRAINS

Table 15. Top 5 importers of U.S. corn

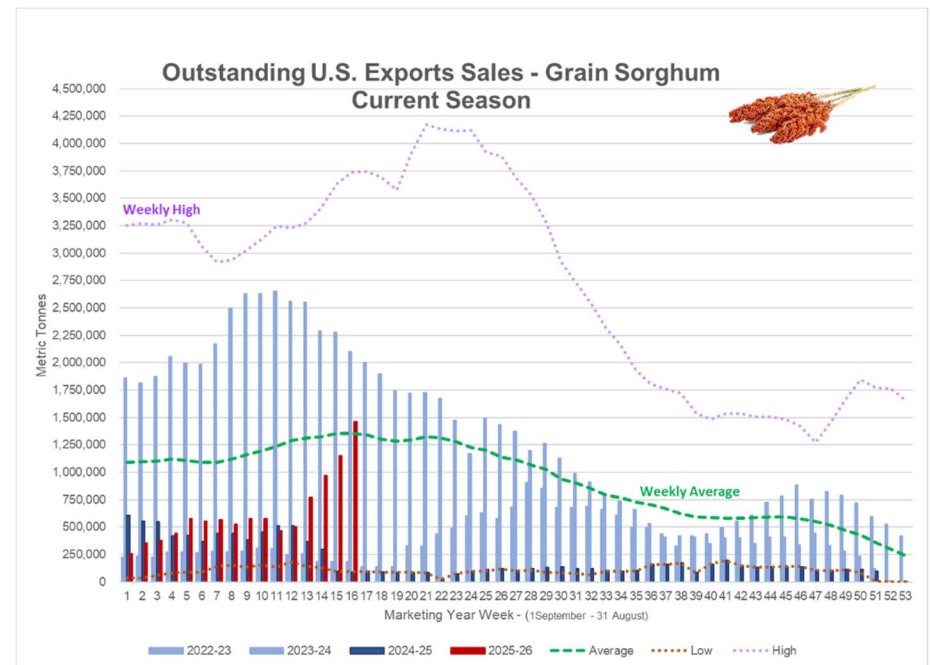
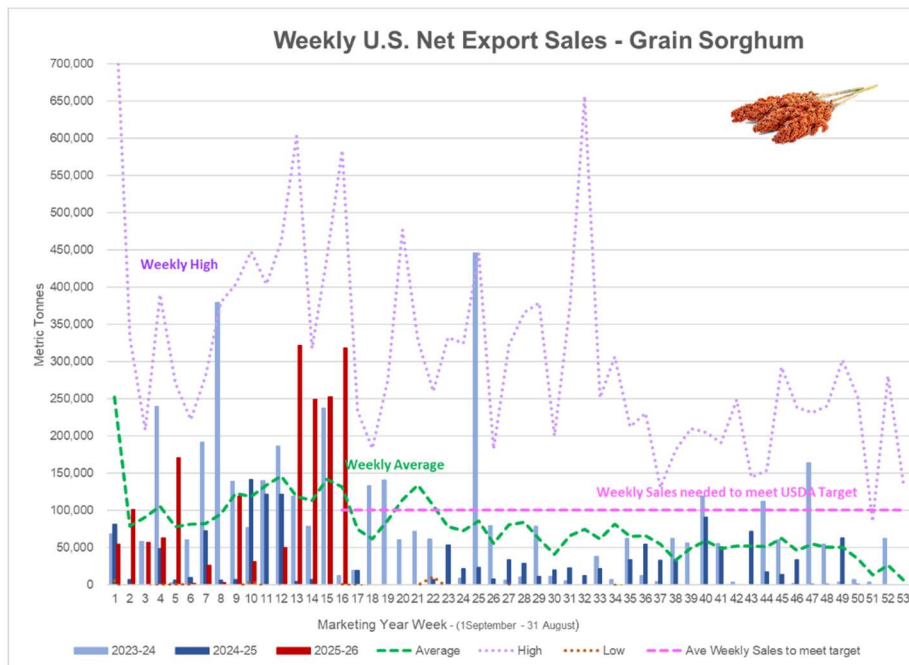
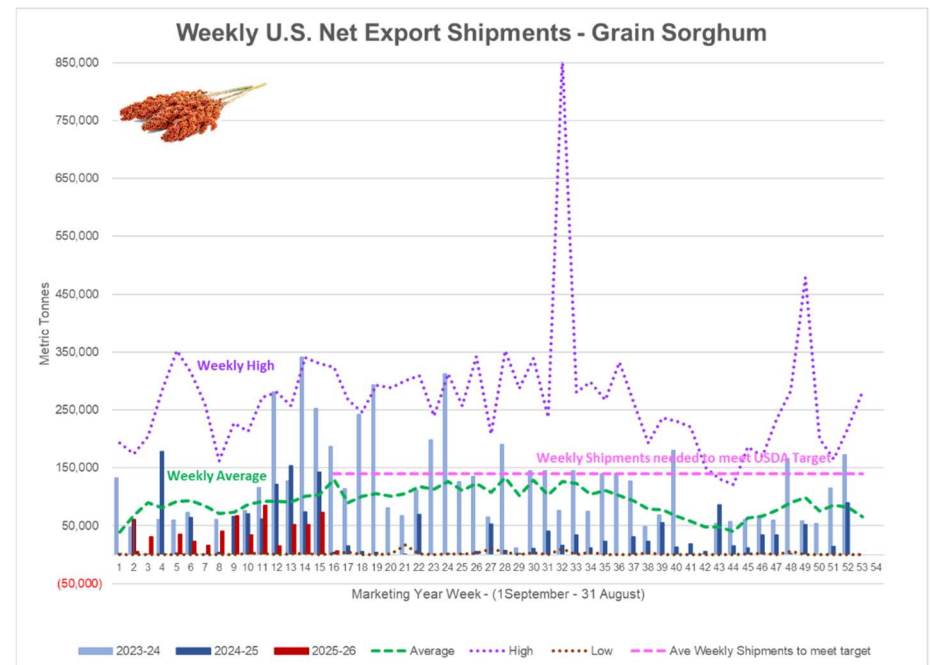
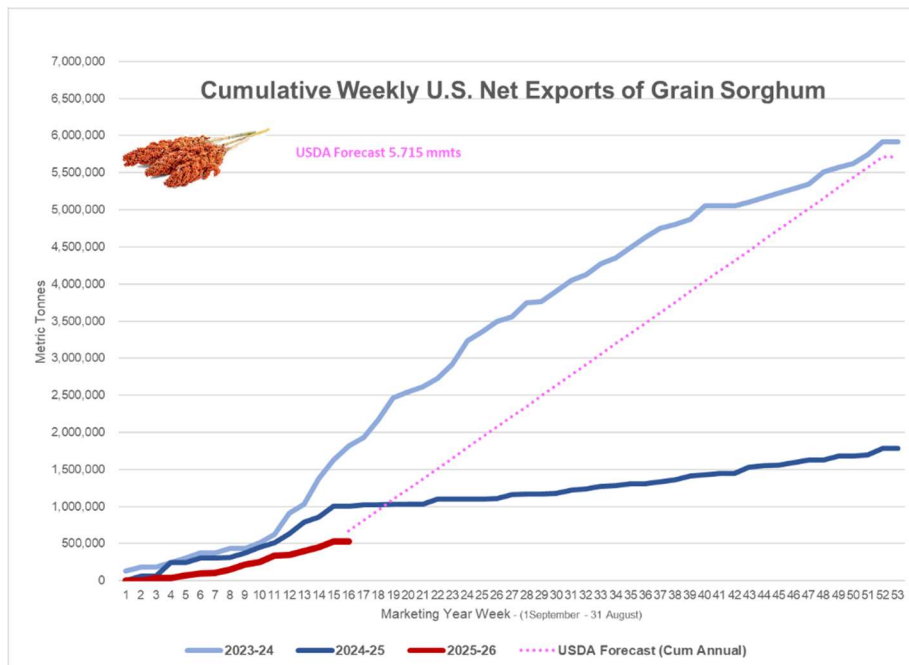
For the week ending 12/18/2025	Total commitments (1,000 mt)		% change current MY from last MY	Exports 3-year average 2022-24 (1,000 mt)
	YTD MY 2025/26	YTD MY 2024/25		
Mexico	16,994	14,901	14	19,839
Japan	7,171	4,896	46	10,478
Colombia	3,772	3,487	8	5,493
China	0	26	-100	3,461
Korea	4,317	1,151	275	3,127
Top 5 importers	27,937	23,311	20	39,272
Total U.S. corn export sales	49,781	38,024	31	54,276
% of YTD current month's export projection	61%	52%	-	-
Change from prior week	2,202	1,711	-	-
Top 5 importers' share of U.S. corn export sales	56%	61%	-	72%
USDA forecast December 2025	81,284	72,597	12	-
Corn use for ethanol USDA forecast, December 2025	142,240	138,075	3	-

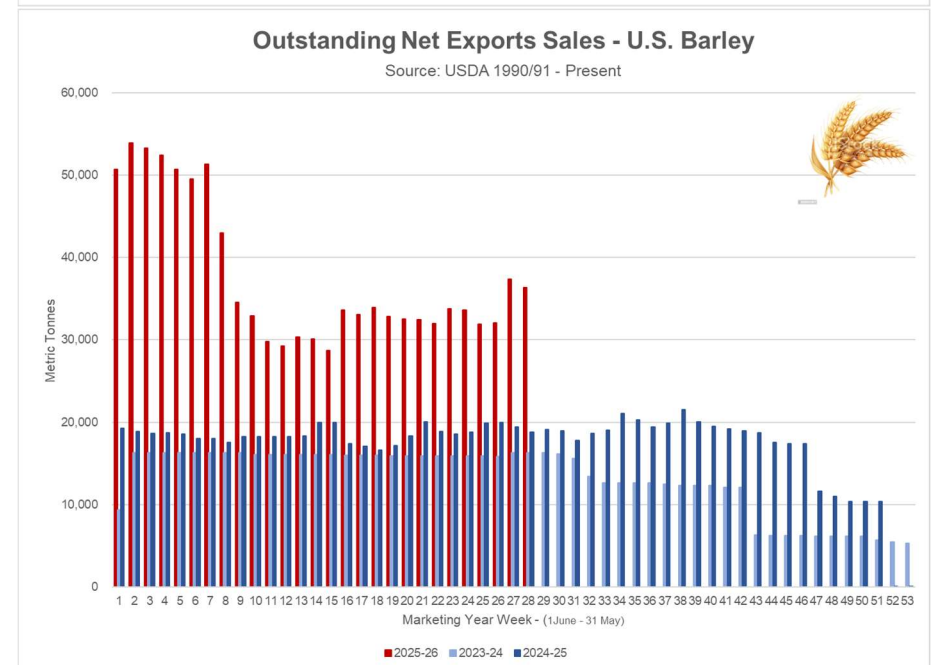
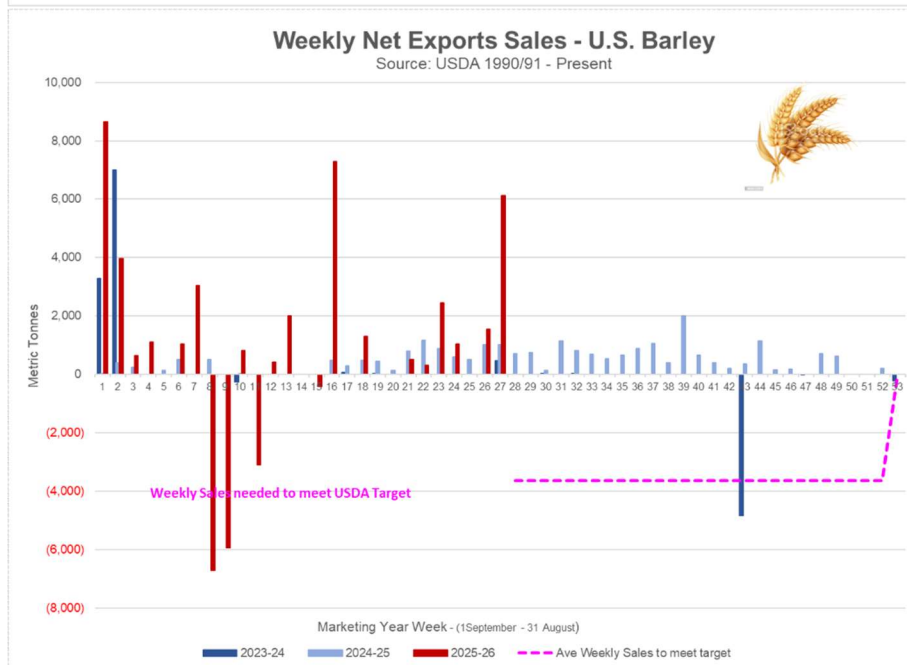
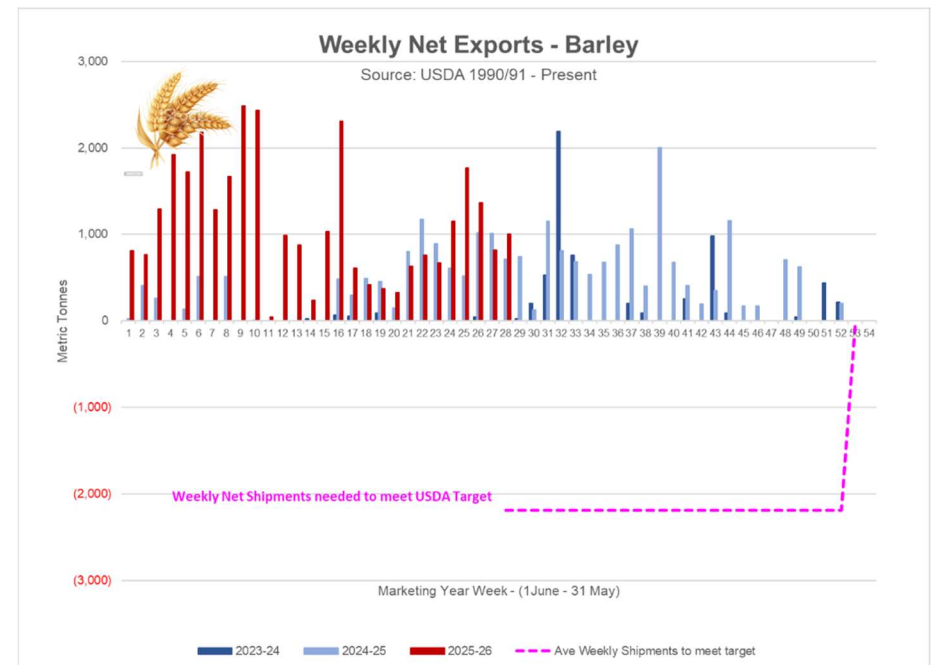
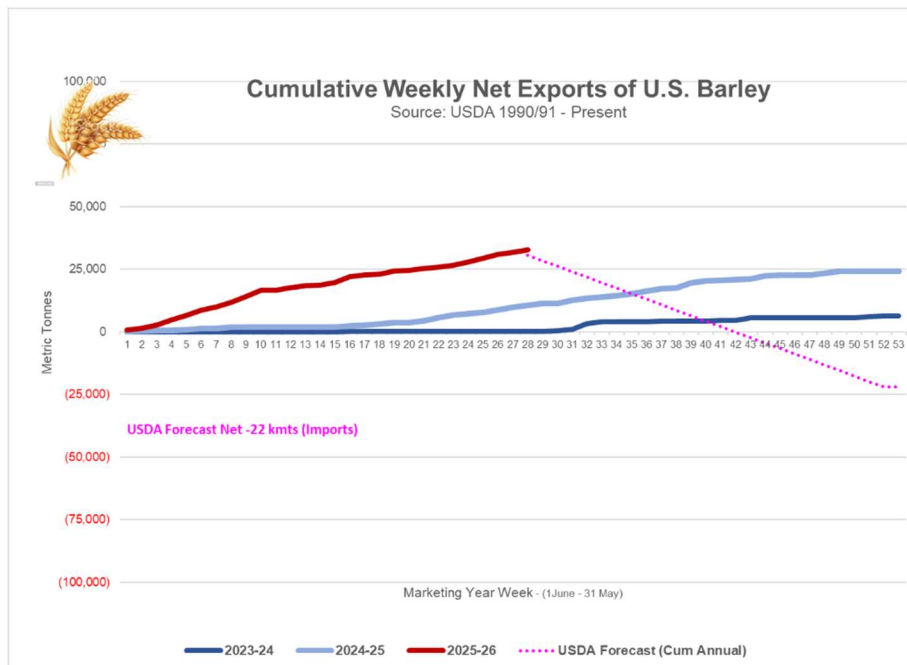
Note: The top 5 importers are based on USDA, Foreign Agricultural Service (FAS) marketing year ranking reports for marketing year (MY) 2024/25 (September 1 – August 31). "Total commitments" = cumulative exports (shipped) + outstanding sales (unshipped), from FAS weekly export sales report, or export sales query. Total commitments' change (net sales) from prior week could include revisions from previous week's outstanding sales or accumulated sales. In rightmost column, "Exports" = accumulated exports (as defined in FAS marketing year ranking reports). mt = metric ton; yr. = year; avg. = average; YTD = year to date; "-" = not applicable.

Source: USDA, Foreign Agricultural Service.









**OILSEED COMPLEX****Table 16. Top 5 importers of U.S. soybeans**

For the week ending 12/18/2025	Total commitments (1,000 mt)		% change current MY from last MY	Exports 3-year average 2022-24 (1,000 mt)
	YTD MY 2025/26	YTD MY 2024/25		
China	6,026	18,247	-67	26,078
Mexico	3,467	3,165	10	4,762
Japan	1,122	1,059	6	2,107
Egypt	2,169	1,703	27	2,098
Indonesia	947	789	20	1,997
Top 5 importers	13,731	24,963	-45	37,042
Total U.S. soybean export sales	26,833	39,547	-32	48,941
% of YTD current month's export projection	60%	77%	-	-
Change from prior week	1,056	978	-	-
Top 5 importers' share of U.S. soybean export sales	51%	63%	-	76%
USDA forecast, December 2025	44,497	51,220	-13	-

Note: The top 5 importers are based on USDA, Foreign Agricultural Service (FAS) marketing year ranking reports for marketing year (MY) 2024/25 (September 1 – August 31). "Total commitments" = cumulative exports (shipped) + outstanding sales (unshipped), from FAS weekly export sales report, or export sales query. Total commitments' change (net sales) from prior week could include revisions from previous week's outstanding sales or accumulated sales. In rightmost column, "Exports" = accumulated exports (as defined in FAS marketing year ranking reports). mt = metric ton; yr. = year; avg. = average; YTD = year to date; "-" = not applicable.

Source: USDA, Foreign Agricultural Service.



