



IGP Export Pace

Wheat, Corn, Grain Sorghum, and Soybean Complex

31st May 2026
Department of Grain & Food Science,
Kansas State University

by Guy H. Allen – Senior Economist, International Grains Program, Kansas State University

For timely market news and quotes see IGP Market Information Website:

<http://www.dtnigp.com/> Find me on Twitter [igpguy1 @igpguy1](#)

KSU Ag Manager Link: <https://www.agmanager.info/grain-marketing/publications/us-grain-exports-and-trade>

KSU Agriculture Today Podcast Link: <https://agtodayksu.libsyn.com/timeliness-of-corn-and-soybean-plantingworld-grain-supply-and-demand>

IGP Market Information: <http://www.dtnigp.com/index.cfm>

USDA Transportation Report: <https://www.ams.usda.gov/services/transportation-analysis/gtr>

USDA FAS Historical Grain Shipments: <https://apps.fas.usda.gov/export-sales/wkHistData.htm>, <https://apps.fas.usda.gov/export-sales/complete.htm>

Contents

| | |
|--|-----------|
| U.S. EXPORT ACTIVITY | 1 |
| ➤ Export Sales | 1 |
| ➤ Vessel Loadings | 1 |
| ➤ Export Inspections | 2 |
| CEREAL GRAINS | 5 |
| ➤ Wheat Export Shipments and Sales..... | 5 |
| ➤ Rice Export Shipments and Sales | 5 |
| COARSE GRAINS | 7 |
| OILSEED COMPLEX | 11 |
| ➤ Soybean Export Shipments and Sales | 11 |
| ➤ Soybean Oil Export Shipments and Sales | 11 |

- This summary based on reports for the 29th of May 2026
- Outstanding Export Sales (Unshipped Balances) on the 21st of May 2026
- Export Shipments in Current Marketing Year
- Daily Sales Reported for the 28th of May 2026

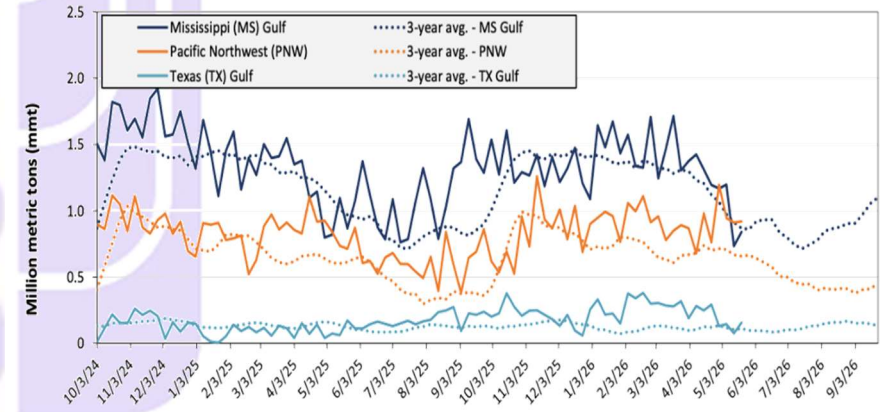
U.S. EXPORT ACTIVITY

➤ Export Sales

- Export Sales data for the week ending May 21, were not released by the time of publication because of the Federal Holiday on May 25. Therefore, Grain Transportation tables 14-17 are not updated in this week's issue.

➤ Vessel Loadings

Figure 18. U.S. grain inspections for U.S. Gulf and PNW (wheat, corn, and soybeans)



Ocean - For the week ending May 21, 25 oceangoing grain vessels were loaded in the Gulf—14% more than the same period last year. Within the next 10 days (starting May 22), 38 vessels were expected to be loaded – unchanged from the same period last year. As of May 21, the rate for shipping a metric ton (mt) of grain from the U.S. Gulf to Japan was \$71.00, down 1% from the previous week. The rate from the Pacific Northwest to Japan was \$37.25 per mt, unchanged from the previous week.

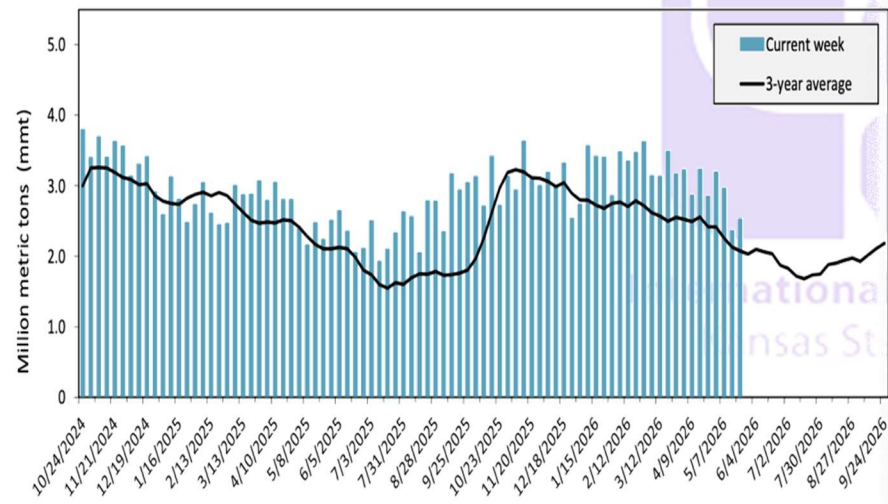
Table 14. U.S. export balances and cumulative exports (1,000 metric tons)

| Grain Exports | | Wheat | | | | | | Corn | Soybeans | Total |
|--|---|-----------------------|-----------------------|-----------------------|------------------------|-------|-----------|--------|----------|---------|
| | | Hard red winter (HRW) | Soft red winter (SRW) | Hard red spring (HRS) | Soft white wheat (SWW) | Durum | All wheat | | | |
| Current unshipped (outstanding) export sales | For the week ending 05/14/2026 | 854 | 269 | 781 | 557 | 35 | 2,496 | 20,623 | 4,927 | 28,046 |
| | This week year ago | 597 | 168 | 409 | 397 | 25 | 1,596 | 16,675 | 4,163 | 22,434 |
| | Last 4 wks. as % of same period 2024/25 | 158 | 306 | 208 | 158 | 215 | 175 | 125 | 131 | 129 |
| Current shipped (cumulative) exports sales | 2025/26 YTD | 7,973 | 3,094 | 5,807 | 5,012 | 613 | 22,565 | 59,250 | 34,444 | 116,259 |
| | 2024/25 YTD | 4,916 | 2,970 | 6,286 | 5,359 | 327 | 19,858 | 46,604 | 44,025 | 110,488 |
| | YTD 2025/26 as % of 2024/25 | 162 | 104 | 92 | 94 | 187 | 114 | 127 | 78 | 105 |
| | Total 2024/25 | 5,377 | 3,106 | 6,560 | 5,730 | 335 | 21,107 | 69,081 | 50,106 | 140,295 |
| | Total 2023/24 | 3,535 | 4,260 | 6,314 | 3,906 | 526 | 18,540 | 54,277 | 44,510 | 117,328 |

Note: The marketing year for wheat is June 1 to May 31 and, for corn and soybeans, September 1 to August 31. YTD = year-to-date; wks. = weeks.
Source: USDA, Foreign Agricultural Service.

➤ **Export Inspections**

Figure 17. U.S. grain inspected for export (wheat, corn, and soybeans)



**GRAINS INSPECTED AND/OR WEIGHED FOR EXPORT
REPORTED IN WEEK ENDING MAY 21, 2026
-- METRIC TONS --**

| GRAIN | WEEK ENDING | | | CURRENT MARKET YEAR TO DATE | PREVIOUS MARKET YEAR TO DATE |
|--------------|------------------|------------------|------------------|-----------------------------|------------------------------|
| | 05/21/2026 | 05/14/2026 | 05/22/2025 | | |
| BARLEY | 0 | 0 | 0 | 7,145 | 10,307 |
| CORN | 1,581,717 | 1,399,628 | 1,419,437 | 60,179,101 | 47,004,055 |
| FLAXSEED | 0 | 0 | 24 | 824 | 480 |
| MIXED | 0 | 0 | 0 | 0 | 122 |
| OATS | 0 | 0 | 0 | 5,785 | 946 |
| RYE | 0 | 0 | 0 | 0 | 0 |
| SORGHUM | 3,109 | 141,397 | 52,470 | 3,877,247 | 1,787,854 |
| SOYBEANS | 571,620 | 570,564 | 200,022 | 35,135,489 | 44,366,660 |
| SUNFLOWER | 0 | 0 | 0 | 40 | 0 |
| WHEAT | 368,455 | 236,358 | 562,969 | 23,479,616 | 21,313,045 |
| Total | 2,524,901 | 2,347,947 | 2,234,922 | 122,685,247 | 114,483,469 |

CROP MARKETING YEARS BEGIN JUNE 1 FOR WHEAT, RYE, OATS, BARLEY AND FLAXSEED; SEPTEMBER 1 FOR CORN, SORGHUM, SOYBEANS AND SUNFLOWER SEEDS. INCLUDES WATERWAY SHIPMENTS TO CANADA.

**SOYBEANS INSPECTED AND/OR WEIGHED FOR EXPORT
BY PORT AREA AND COUNTRY OF DESTINATION
REPORTED IN WEEK ENDING MAY 21, 2026
-- METRIC TONS --**

Source: https://www.ams.usda.gov/mnreports/wa_qr101.txt

Table 18. Grain inspections for export by U.S. port region (1,000 metric tons)

| Port regions | Commodity | For the week ending 05/21/2026 | Previous week* | Current week as % of previous | 2026 YTD* | 2025 YTD* | 2026 YTD as % of 2025 YTD | Last 4-weeks as % of: | | 2025 total* |
|----------------------|-----------|-----------------------------------|-------------------|----------------------------------|-----------|-----------|------------------------------|-----------------------|------------------|-------------|
| | | | | | | | | Last year | Prior 3-yr. avg. | |
| Pacific Northwest | Corn | 649 | 450 | 144 | 10,419 | 10,372 | 100 | 107 | 140 | 24,214 |
| | Soybeans | 119 | 272 | 44 | 3,882 | 1,966 | 197 | 556 | 783 | 2,957 |
| | Wheat | 152 | 124 | 123 | 4,024 | 4,346 | 93 | 86 | 109 | 12,271 |
| | All grain | 920 | 912 | 101 | 18,481 | 16,778 | 110 | 120 | 151 | 39,721 |
| Mississippi Gulf | Corn | 542 | 592 | 91 | 15,103 | 14,887 | 101 | 95 | 107 | 37,115 |
| | Soybeans | 250 | 121 | 207 | 10,891 | 9,473 | 115 | 166 | 156 | 23,350 |
| | Wheat | 48 | 21 | 234 | 1,245 | 1,425 | 87 | 87 | 79 | 3,980 |
| | All grain | 840 | 734 | 114 | 27,239 | 25,784 | 106 | 105 | 113 | 64,484 |
| Texas Gulf | Corn | 57 | 0 | n/a | 611 | 116 | 529 | 825 | 328 | 590 |
| | Soybeans | 0 | 0 | n/a | 100 | 106 | 94 | n/a | n/a | 1,431 |
| | Wheat | 99 | 13 | 751 | 1,580 | 1,403 | 113 | 66 | 110 | 4,690 |
| | All grain | 156 | 75 | 209 | 5,072 | 1,740 | 291 | 122 | 114 | 7,774 |
| Interior | Corn | 282 | 282 | 100 | 6,262 | 5,172 | 121 | 105 | 126 | 15,546 |
| | Soybeans | 146 | 174 | 84 | 2,894 | 2,685 | 108 | 111 | 139 | 7,712 |
| | Wheat | 69 | 68 | 102 | 1,216 | 1,170 | 104 | 104 | 124 | 3,104 |
| | All grain | 501 | 548 | 91 | 10,594 | 9,266 | 114 | 105 | 130 | 26,887 |
| Great Lakes | Corn | 21 | 21 | 102 | 218 | 0 | n/a | n/a | n/a | 414 |
| | Soybeans | 0 | 0 | n/a | 20 | 0 | n/a | n/a | 132 | 63 |
| | Wheat | 0 | 11 | 0 | 112 | 93 | 121 | 130 | 133 | 434 |
| | All grain | 21 | 32 | 67 | 350 | 93 | 378 | 502 | 374 | 911 |
| Atlantic | Corn | 30 | 54 | 56 | 704 | 149 | 473 | 596 | 808 | 607 |
| | Soybeans | 57 | 4 | n/a | 540 | 443 | 122 | 980 | 635 | 1,085 |
| | Wheat | 0 | 0 | n/a | 6 | 34 | 18 | 92 | 146 | 81 |
| | All grain | 87 | 58 | 149 | 1,250 | 625 | 200 | 637 | 662 | 1,773 |
| All Regions | Corn | 1,582 | 1,400 | 113 | 33,317 | 30,695 | 109 | 106 | 127 | 78,486 |
| | Soybeans | 572 | 571 | 100 | 18,732 | 14,776 | 127 | 186 | 200 | 36,851 |
| | Wheat | 368 | 236 | 156 | 8,184 | 8,470 | 97 | 85 | 106 | 24,560 |
| | All grain | 2,526 | 2,359 | 107 | 63,390 | 54,390 | 117 | 115 | 133 | 141,803 |

*Note: Data include revisions from prior weeks; "All grain" includes corn, soybeans, wheat, sorghum, oats, barley, rye, sunflower, flaxseed, and mixed grains; "All regions" includes listed regions and other minor regions not listed; YTD = year-to-date; n/a = not available or no change. A "-" in the table indicates a percentage change with a near-zero denominator for the period.

Source: USDA, Federal Grain Inspection Service.

BARGE MOVEMENTS

Figure 12. Barge movements on the Mississippi River (Locks 27-Granite City, IL)

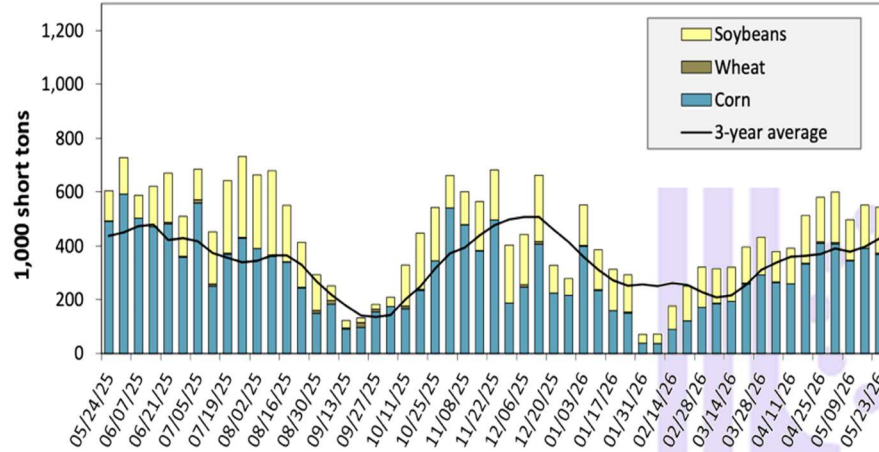
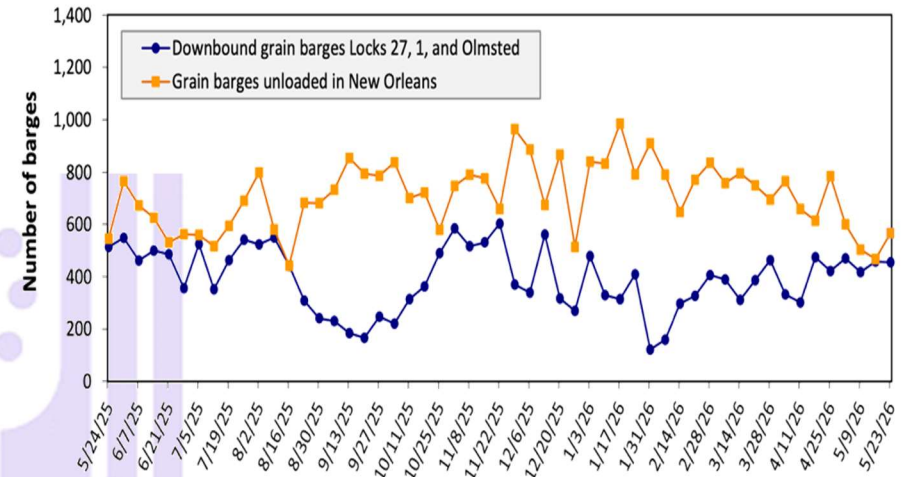


Figure 14. Grain barges for export in New Orleans region



Barge – For the week ending May 23rd, barged grain movements totaled 711,203 tons. This was 2% less than the previous week and 3% less than the same week last year. For the week ending May 23, 455 barges moved down river, 3 less than the previous week. There were 566 grain barges unloaded in the New Orleans Region, 21% fewer than the previous week.

Table 10. Barged grain movements (1,000 tons)

| For the week ending 05/23/2026 | Corn | Wheat | Soybeans | Other | Total |
|--|--------|-------|----------|-------|--------|
| Mississippi River (Rock Island, IL (L15)) | 152 | 3 | 89 | 0 | 244 |
| Mississippi River (Winfield, MO (L25)) | 297 | 5 | 153 | 0 | 455 |
| Mississippi River (Alton, IL (L26)) | 348 | 3 | 170 | 0 | 520 |
| Mississippi River (Granite City, IL (L27)) | 368 | 5 | 171 | 0 | 544 |
| Illinois River (La Grange) | 66 | 0 | 33 | 0 | 100 |
| Ohio River (Olmsted) | 92 | 0 | 48 | 14 | 153 |
| Arkansas River (L1) | 0 | 11 | 3 | 0 | 14 |
| Weekly total - 2026 | 459 | 16 | 222 | 14 | 711 |
| Weekly total - 2025 | 562 | 35 | 138 | 0 | 735 |
| 2026 YTD | 6,506 | 343 | 4,236 | 45 | 11,129 |
| 2025 YTD | 7,769 | 425 | 4,376 | 94 | 12,665 |
| 2026 as % of 2025 YTD | 84 | 81 | 97 | 47 | 88 |
| Last 4 weeks as % of 2025 | 78 | 58 | 131 | 107 | 89 |
| Total 2025 | 20,015 | 1,259 | 11,322 | 166 | 32,761 |

Note: "Other" refers to oats, barley, sorghum, and rye. Total may not add up due to rounding. YTD = year to date. Weekly total, YTD, and calendar year total include Mississippi River lock 27, Ohio River Olmsted lock, and Arkansas Lock 1. "L" (as in "L15") refers to a lock, locks, or lock and dam facility.
Source: U.S. Army Corps of Engineers.

CEREAL GRAINS

➤ Wheat Export Shipments and Sales

Wheat: Net sales reductions of 807,300 metric tons (mts) for 2025/2026--a marketing-year low--were down noticeably from the previous week and from the prior 4-week average. Increases for South Korea (46,500 mts), the Dominican Republic (3,000 mts, including 30,000 mts switched from unknown destinations and decreases of 29,600 mts), and Ecuador (800 mts), were more than offset by reductions primarily for Japan (171,600 mts), Panama (108,500 mts), unknown destinations (105,500 mts), Mexico (103,300 mts), and the Philippines (88,300 mts). Net sales of 1,057,500 mts for 2026/2027 were primarily for Japan (252,100 mts), the Philippines (166,900 mts), Mexico (125,600 mts), Panama (105,500 mts), and unknown destinations (68,600 mts).

Exports of 299,700 mts were up 30% from the previous week, but down 23% from the prior 4-week average. The destinations were primarily to Japan (73,900 mts), the Dominican Republic (59,100 mts), Haiti (39,600 mts), Mexico (39,400 mts), and the Philippines (25,200 mts).

Optional Origin Sales: For 2025/2026, the current outstanding balance of 30,000 mts, all Mexico.

Source: USDA FAS - <https://apps.fas.usda.gov/esrqs/#/reports/weeklyexportsalesreportdetail>

➤ Rice Export Shipments and Sales

Rice: Net sales of 8,700 mts for 2025/2026 were down 84% from the previous week and 67% from the prior 4-week average. Increases primarily for Honduras (5,000 mts), Mexico (1,600 mts), Canada (1,000 mts, including decreases of 200 mts), Saudi Arabia (800 mts), and Japan (200 mts), were offset by reductions for Colombia (600 mts). Net sales of 12,600 mts for 2026/2027 were reported for the United Kingdom (10,000 mts), Saudi Arabia (2,000 mts), and Japan (600 mts).

Table 17. Top 10 importers of all U.S. wheat

| For the week ending 5/14/2026 | Total commitments (1,000 mt) | | | % change current MY from last MY | Exports 3-year average 2022-24 (1,000 mt) |
|--|------------------------------|----------------|----------------|----------------------------------|---|
| | YTD MY 2026/27 | YTD MY 2025/26 | YTD MY 2024/25 | | |
| Mexico | 511 | 4,615 | 3,894 | 19 | 3,358 |
| Philippines | 313 | 2,959 | 2,653 | 12 | 2,473 |
| Japan | 69 | 2,349 | 2,115 | 11 | 2,045 |
| China | 0 | 336 | 139 | 142 | 1,137 |
| Korea | 325 | 1,873 | 2,419 | -23 | 1,674 |
| Taiwan | 106 | 1,018 | 1,016 | 0 | 935 |
| Thailand | 116 | 714 | 950 | -25 | 667 |
| Nigeria | 0 | 1,605 | 761 | 111 | 629 |
| Indonesia | 0 | 1,091 | 768 | 42 | 518 |
| Colombia | 66 | 759 | 546 | 39 | 489 |
| Top 10 importers | 1505 | 17,319 | 15,262 | 13 | 13,926 |
| Total U.S. wheat export sales | 2,030 | 25,061 | 21,455 | 17 | 19,135 |
| % of YTD current month's export projection | 10% | 101% | 95% | - | - |
| Change from prior week | 130 | 166 | -13 | - | - |
| Top 10 importers' share of U.S. wheat export sales | 74% | 69% | 71% | - | 73% |
| USDA forecast, May 2026 | 21,092 | 24,766 | 22,480 | 10 | - |

Note: The top 10 importers are based on USDA, Foreign Agricultural Service (FAS) marketing year ranking reports for marketing year (MY) 2024/25 (June 1 - May 31). "Total commitments" = cumulative exports (shipped) + outstanding sales (unshipped), from FAS weekly export sales report, or export sales query. Total commitments' change (net sales) from prior week could include revisions from previous week's outstanding sales or accumulated sales. In rightmost column, "Exports" = accumulated exports (as defined in FAS marketing year ranking reports). mt = metric ton; yr. = year; avg. = average; YTD = year to date; "-" = not applicable.

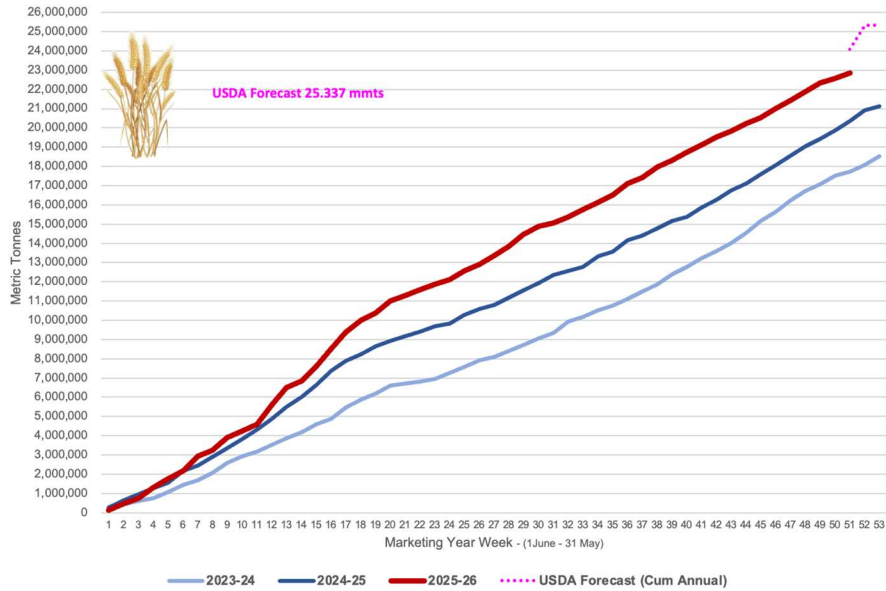
Source: USDA, Foreign Agricultural Service.

Exports of 38,800 mts were down 10% from the previous week and 37% from the prior 4-week average. The destinations were primarily to Colombia (15,400 mts), Mexico (12,500 mts), South Korea (3,800 mts), Canada (2,900 mts), and Saudi Arabia (1,300 mts).

Source: USDA FAS - <https://apps.fas.usda.gov/esrqs/#/reports/weeklyexportsalesreportdetail>

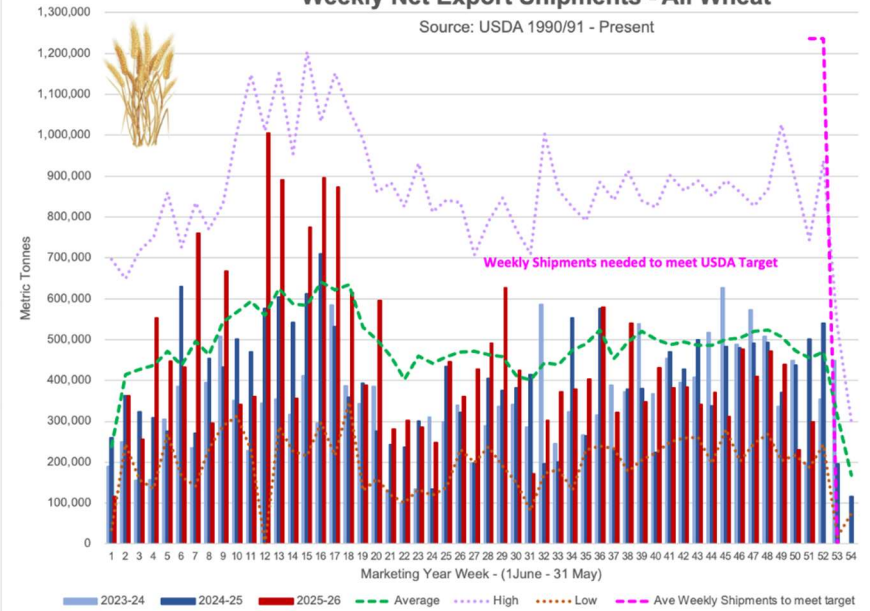
Cumulative Weekly Net Exports of U.S. All Wheat

Source: USDA 1990/91 - Present



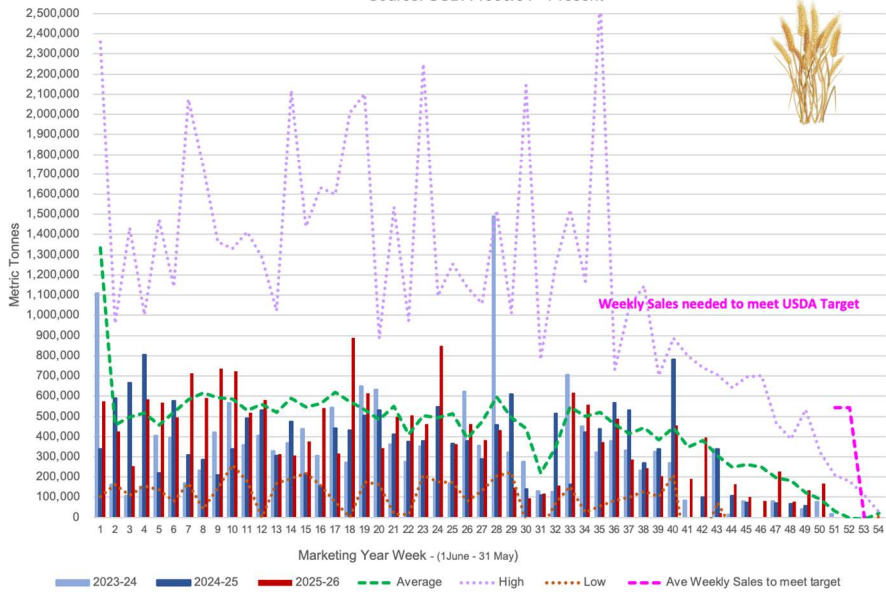
Weekly Net Export Shipments - All Wheat

Source: USDA 1990/91 - Present



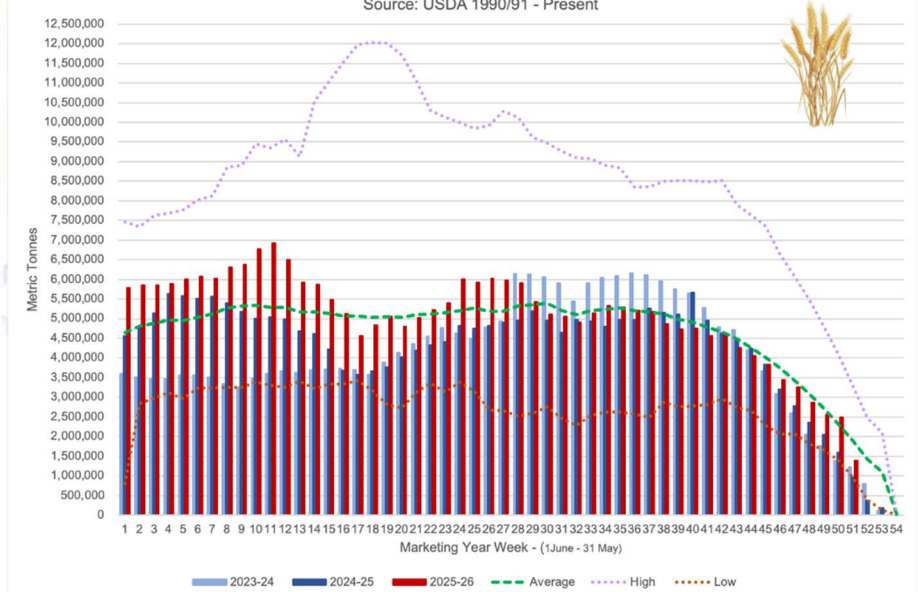
Weekly Net Export Sales - U.S. All Wheat

Source: USDA 1990/91 - Present



Outstanding Export Sales - U.S. All Wheat

Source: USDA 1990/91 - Present



COARSE GRAINS

Corn: Net sales of 1,015,300 mts for 2025/2026 were down 52% from the previous week and 30% from the prior 4-week average. Increases primarily for Mexico (435,900 mts, including decreases of 18,500 mts), Colombia (251,500 mts, including 89,400 mts switched from unknown destinations and decreases of 11,100 mts), Japan (118,300 mts, including 65,000 mts switched from unknown destinations, 50,000 mts switched from the Philippines, and decreases of 4,500 mts), South Korea (66,000 mts, including 60,000 mts switched from unknown destinations and decreases of 1,300 mts), and Portugal (65,500 mts, including 30,000 mts switched from unknown destinations), were offset by reductions for the Philippines (50,000 mts), Guatemala (13,500 mts), Trinidad & Tobago (8,100 mts), El Salvador (7,100 mts), and Canada (300 mts). Net sales of 618,600 mts for 2026/2027 were primarily for Mexico (249,900 mts), unknown destinations (197,500 mts), Japan (60,000 mts), Colombia (43,000 mts), and Panama (39,800 mts). Exports of 1,613,900 mts were up 12% from the previous week, but down 5% from the prior 4-week average. The destinations were primarily to Mexico (466,000 mts), South Korea (261,000 mts), Colombia (221,100 mts), Japan (214,300 mts), and Taiwan (157,500 mts).

Export Adjustments: Accumulated exports of corn to South Korea were adjusted down 67,436 mts for week ending April 16th. The correct destination for this shipment is Vietnam.

Export Adjustments: Accumulated exports of corn to Venezuela were adjusted down 5,087 mts for week ending May 7th. The correct destination for this shipment is Colombia.

Table 15. Top 5 importers of U.S. corn

| For the week ending 5/14/2025 | Total commitments (1,000 mt) | | | % change current MY from last MY | Exports 3-year average 2022-24 (1,000 mt) |
|--|------------------------------|----------------|----------------|----------------------------------|---|
| | YTD MY 2026/27 | YTD MY 2025/26 | YTD MY 2024/25 | | |
| Mexico | 1,766 | 22,510 | 20,902 | 8 | 19,839 |
| Japan | 466 | 14,022 | 11,009 | 27 | 10,478 |
| Colombia | 0 | 7,137 | 6,460 | 10 | 5,493 |
| China | 0 | 0 | 33 | -100 | 3,461 |
| Korea | 0 | 8,385 | 5,177 | 62 | 3,127 |
| Top 5 importers | 2,232 | 52,054 | 43,581 | 19 | 42,399 |
| Total U.S. corn export sales | 2,335 | 79,873 | 63,279 | 26 | 54,276 |
| % of YTD current month's export projection | 3% | 95% | 87% | - | - |
| Change from prior week | 281 | 2,125 | 1,191 | - | - |
| Top 5 importers' share of U.S. corn export sales | 96% | 65% | 69% | - | 78% |
| USDA forecast May 2026 | 80,014 | 83,824 | 72,597 | 15 | - |
| Corn use for ethanol USDA forecast May 2026 | 142,240 | 142,240 | 138,075 | 3 | - |

Note: The top 5 importers are based on USDA, Foreign Agricultural Service (FAS) marketing year ranking reports for marketing year (MY) 2024/25 (September 1 – August 31). "Total commitments" = cumulative exports (shipped) + outstanding sales (unshipped), from FAS weekly export sales report, or export sales query. Total commitments' change (net sales) from prior week could include revisions from previous week's outstanding sales or accumulated sales. In rightmost column, "Exports" = accumulated exports (as defined in FAS marketing year ranking reports). mt = metric ton; yr. = year; avg. = average; YTD = year to date; "-" = not applicable.

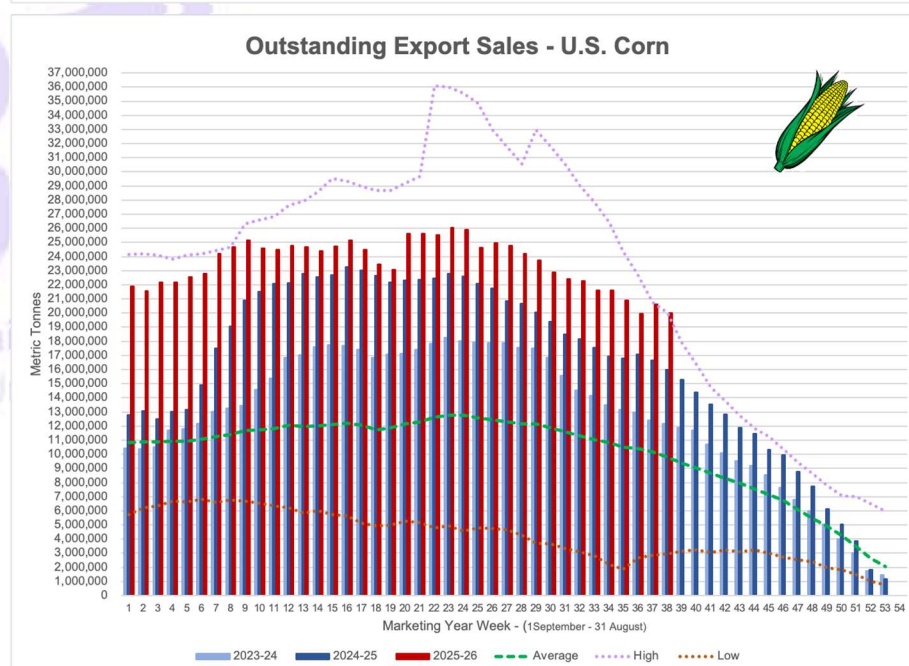
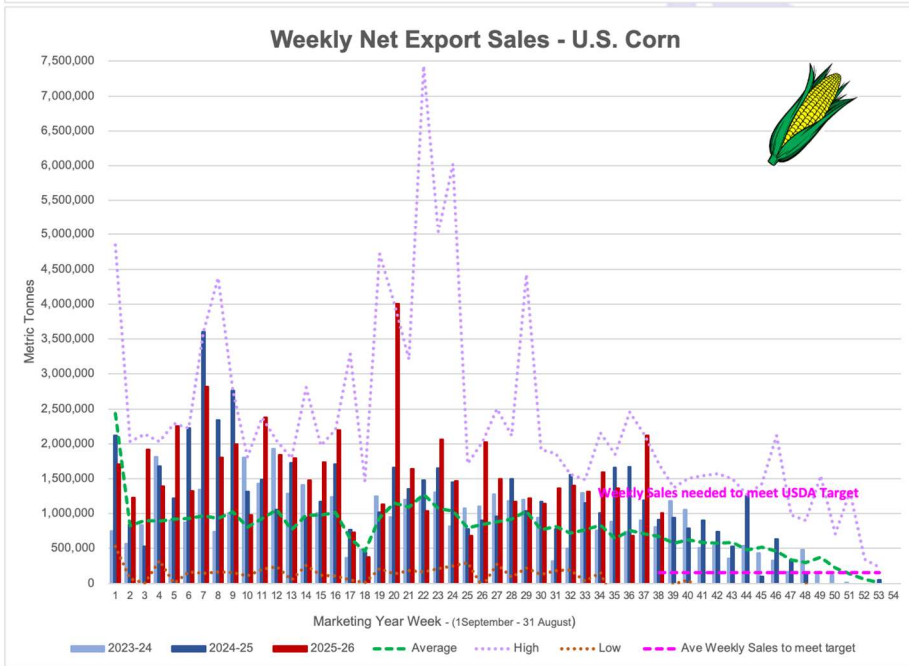
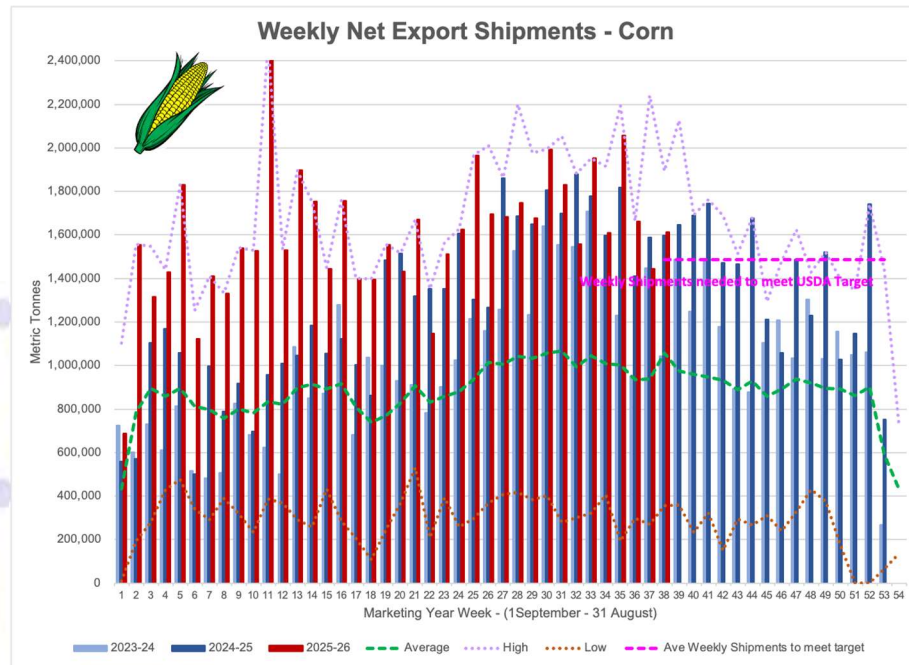
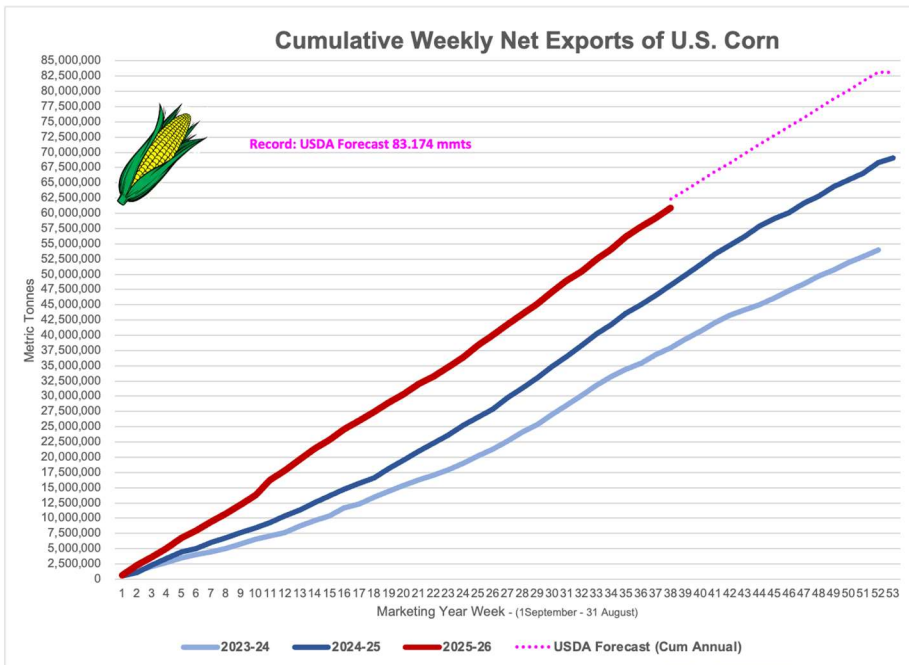
Source: USDA, Foreign Agricultural Service.

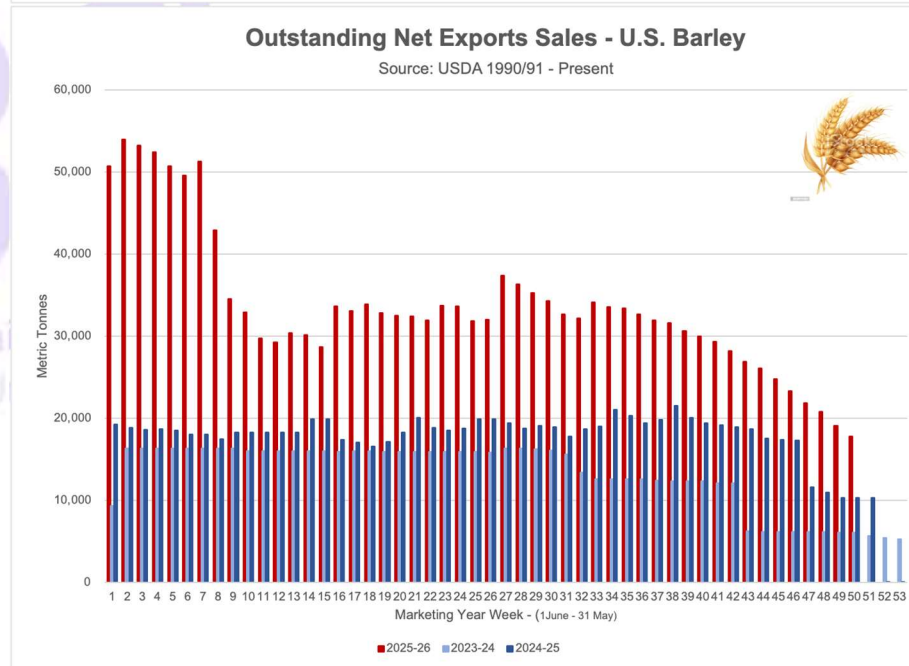
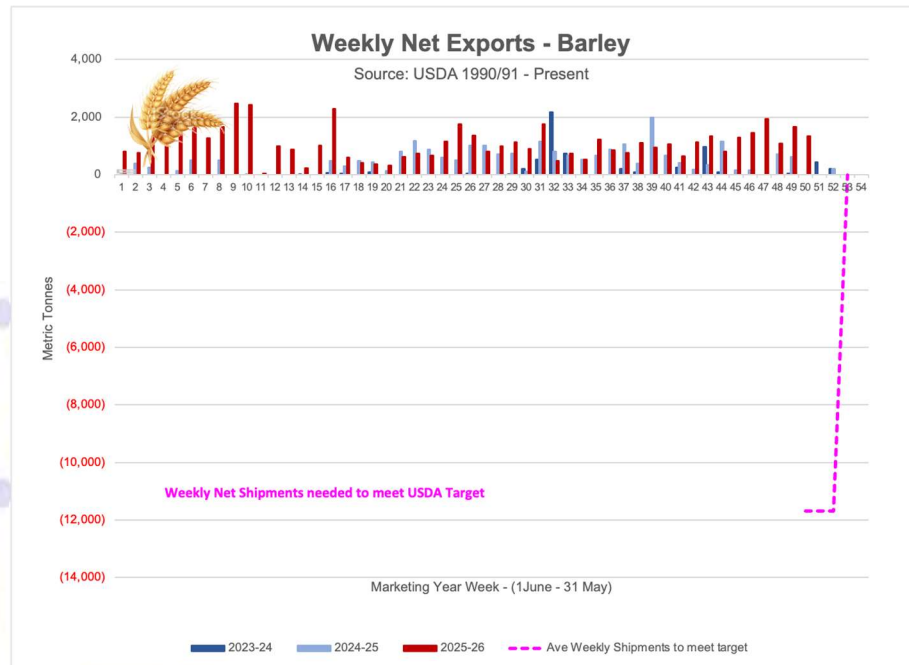
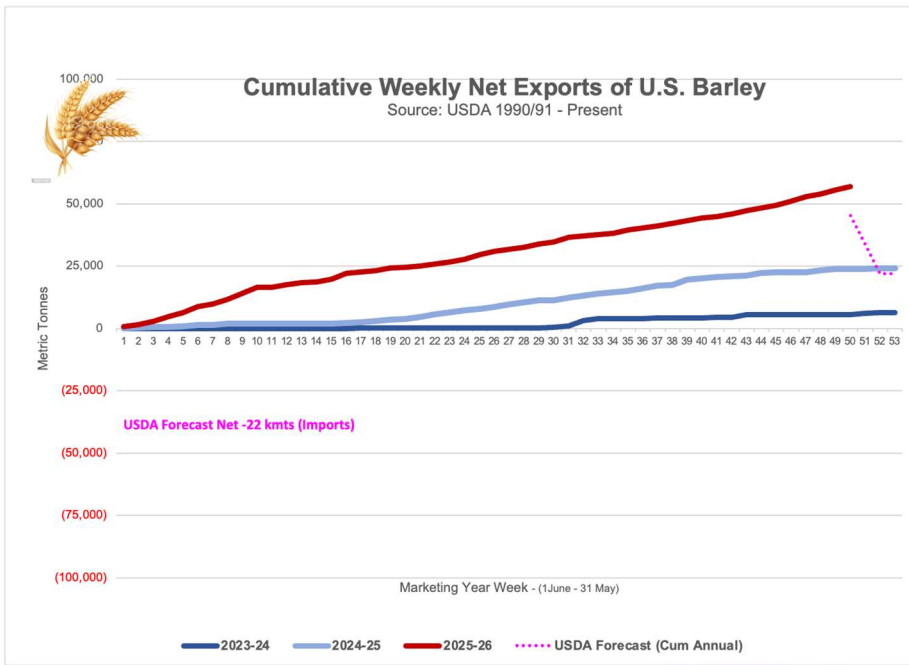
Barley: No net sales for 2025/2026 were reported for the week. Total net sales of 100 mts for 2026/2027 were for South Korea. Exports of 1,300 mts were to Canada (800 mts) and Japan (500 mts).

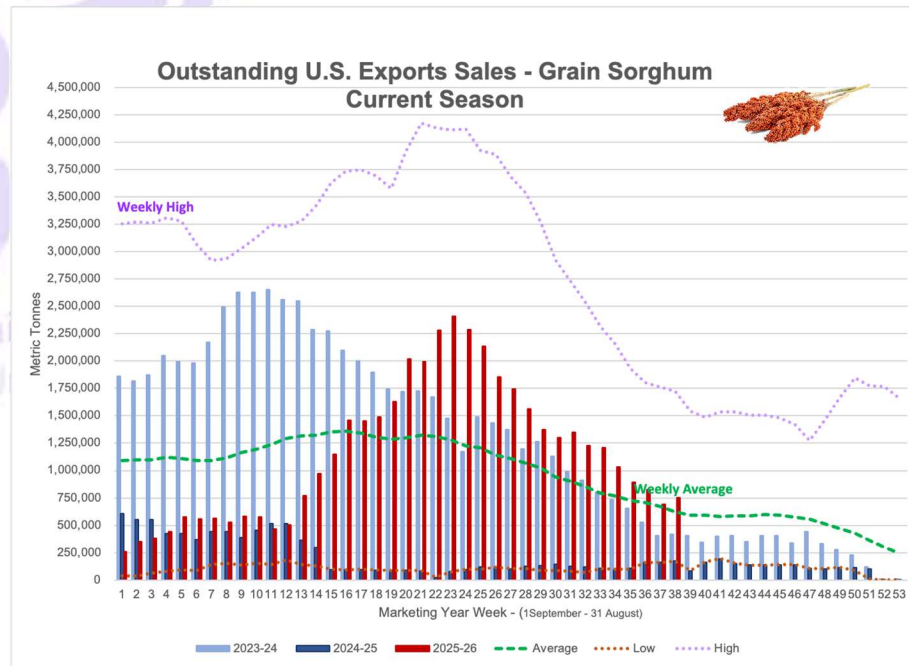
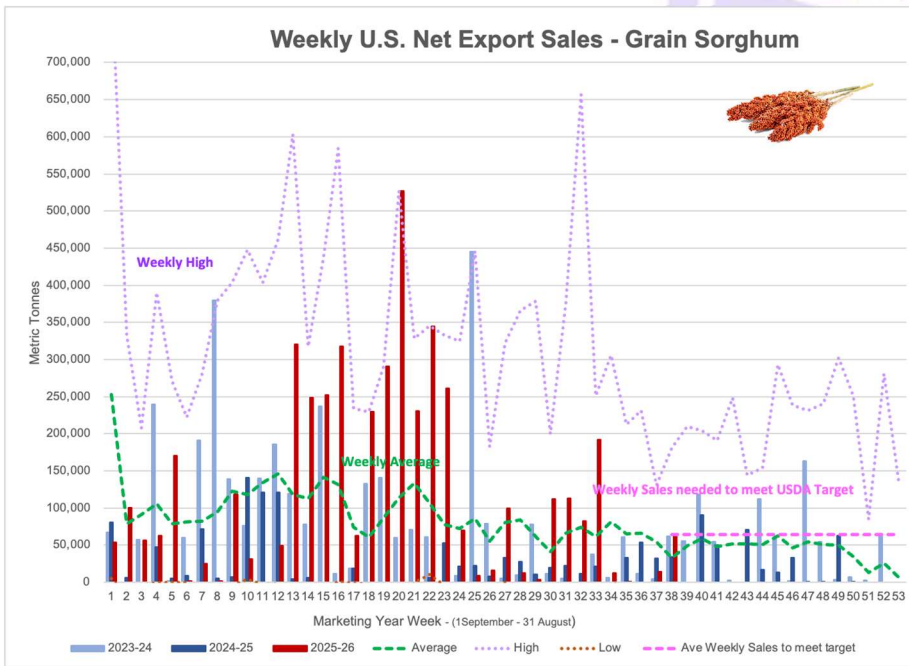
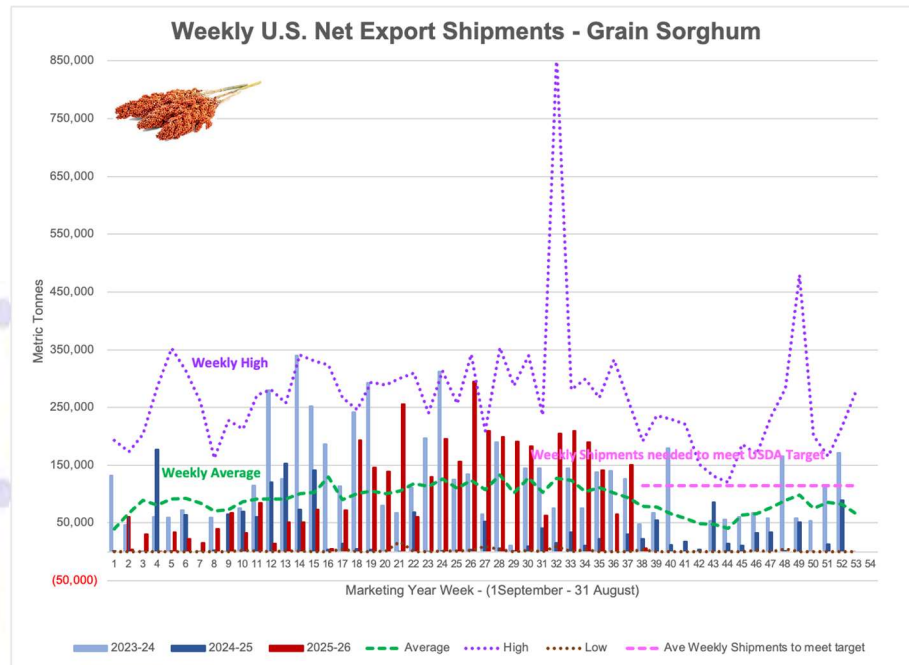
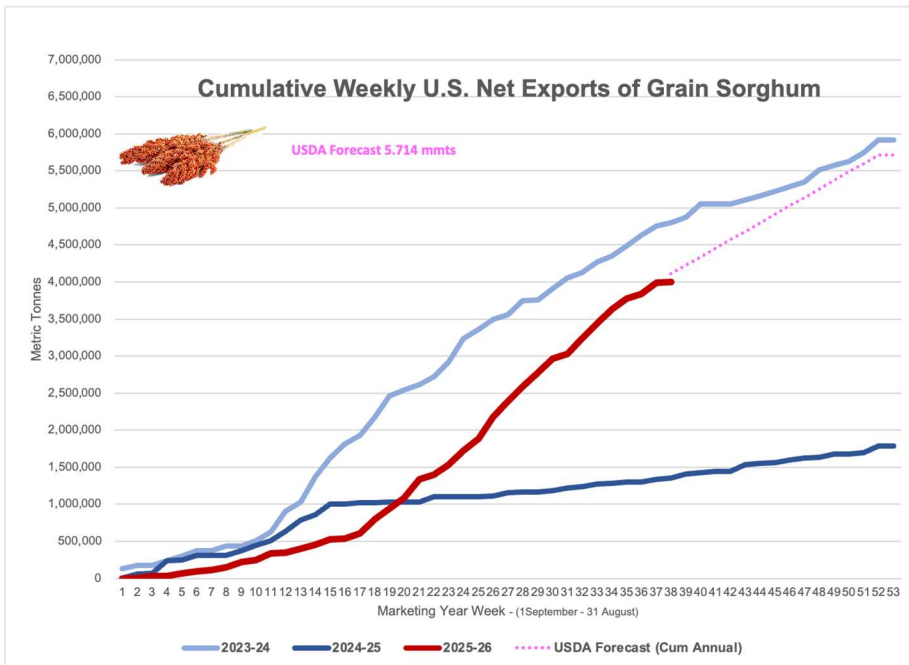
Sorghum: Net sales of 66,000 mts for 2025/2026 were reported for unknown destinations (63,000 mts) and China (3,000 mts).

Exports of 6,800 mts were down 96% from the previous week and 95% from the prior 4-week average. The destinations were to China (6,100 mts) and Japan (700 mts).

Source: USDA FAS - <https://apps.fas.usda.gov/esrqs/#/reports/weeklyexportsalesreportdetail>







OILSEED COMPLEX

➤ Soybean Export Shipments and Sales

Soybeans: Net sales of 299,900 mts for 2025/2026 were down 15% from the previous week, but up 41% from the prior 4-week average. Increases primarily for Mexico (86,800 mts, including decreases of 12,000 mts), unknown destinations (64,000 mts), Egypt (54,100 mts, including 52,000 mts switched from unknown destinations and decreases of 1,000 mts), Colombia (29,500 mts, including decreases of 800 mts), and Indonesia (21,300 mts, including decreases of 1,100 mts), were offset by reductions for Algeria (4,000 mts) and Cambodia (200 mts). Net sales of 137,700 mts for 2026/2027 were primarily for Mexico (60,400 mts), Taiwan (27,000 mts), Japan (20,000 mts), Thailand (17,300 mts), and Indonesia (7,600 mts).

Exports of 571,200 mts were up 8% from the previous week, but down 2% from the prior 4-week average. The destinations were primarily to China (137,300 mts), Egypt (110,100 mts), Mexico (85,700 mts), Colombia (51,300 mts), and Bangladesh (48,400 mts).

Exports for Own Account: For 2025/2026, the current exports for own account outstanding balance of 1,800 mts were to Taiwan.

Soybean Meal Export Shipments and Sales

Soybean Cake and Meal: Net sales of 304,000 mts for 2025/2026 were down 36% from the previous week and 14% from the prior 4-week average. Increases primarily for unknown destinations (204,400 mts), Mexico (40,200 mts, including decreases of 600 mts), Colombia (28,400 mts, including 10,000 mts switched from unknown destinations, 6,000 mts switched from Ecuador, and decreases of 3,700 mts), Poland (27,000 mts switched from Italy), and the Netherlands (21,200 mts switched from Italy), were offset by reductions primarily for Italy (48,900 mts), Taiwan (7,100 mts), Guatemala (5,400 mts), Ecuador (4,900 mts), and Vietnam (2,700 mts). Net sales of 137,300 mts for 2026/2027 were reported for unknown destinations (135,000 mts), Canada (1,200 mts), and Mexico (1,100 mts).

Exports of 396,700 mts were up 16% from the previous week and 21% from the prior 4-week average. The destinations were primarily to Colombia (67,800 mts), the

Table 16. Top 5 importers of U.S. soybeans

| For the week ending 5/14/2026 | Total commitments (1,000 mt) | | | % change current MY from last MY | Exports 3-year average 2022-24 (1,000 mt) |
|---|------------------------------|----------------|----------------|----------------------------------|---|
| | YTD MY 2026/27 | YTD MY 2025/26 | YTD MY 2024/25 | | |
| China | 0 | 11,875 | 22,480 | -47 | 26,078 |
| Mexico | 122 | 4,660 | 4,848 | -4 | 4,762 |
| Japan | 55 | 1,969 | 1,827 | 8 | 2,107 |
| Egypt | 0 | 4,593 | 2,944 | 56 | 2,098 |
| Indonesia | 6 | 2,114 | 1,668 | 27 | 1,997 |
| Top 5 importers | 182 | 25,211 | 33,768 | -25 | 37,042 |
| Total U.S. soybean export sales | 510 | 39,371 | 48,188 | -18 | 48,941 |
| % of YTD current month's export projection | 19% | 95% | 94% | - | - |
| Change from prior week | 173 | 351 | 308 | - | - |
| Top 5 importers' share of U.S. soybean export sales | 36% | 64% | 70% | - | 76% |
| USDA forecast, May 2026 | 44,361 | 41,640 | 51,220 | -19 | - |

Note: The top 5 importers are based on USDA, Foreign Agricultural Service (FAS) marketing year ranking reports for marketing year (MY) 2024/25 (September 1 – August 31). "Total commitments" = cumulative exports (shipped) + outstanding sales (unshipped), from FAS weekly export sales report, or export sales query. Total commitments' change (net sales) from prior week could include revisions from previous week's outstanding sales or accumulated sales. In rightmost column, "Exports" = accumulated exports (as defined in FAS marketing year ranking reports). mt = metric ton; yr. = year; avg. = average; YTD = year to date; "-" = not applicable. Source: USDA, Foreign Agricultural Service.

Philippines (53,900 mts), Australia (32,400 mts), Saudi Arabia (31,000 mts), and Mexico (27,600 mts).

Optional Origin Sales: For 2025/2026, the current outstanding balance of 42,100 mts, all Ecuador. For 2026/2027, the current outstanding balance of 2,000 mts, all Ecuador.

Export Adjustments: Accumulated exports of soybean cake and meal to Venezuela were adjusted down 11,000 mts for week ending May 7. The correct destination for this shipment is Colombia.

➤ Soybean Oil Export Shipments and Sales

Soybean Oil: Net sales of 3,400 mts for 2025/2026 were up noticeably from the previous week and from the prior 4-week average. Increases were primarily for Mexico (2,100 mts) and Canada (1,200 mts, including decreases of 400 mts).

Exports of 2,300 mts were up 50% from the previous week and 43% from the prior 4-week average. The destinations were primarily to Mexico (2,000 mts) and Canada (300 mts).

Source: USDA FAS - <https://apps.fas.usda.gov/esrqs/#/reports/weeklyexportsalesreportdetail>

