



IGP Export Pace

Wheat, Corn, Grain Sorghum, and Soybean Complex

5th December 2025

Department of Grain & Food Science,
Kansas State University

KSU Ag Manager Link: <https://www.agmanager.info/grain-marketing/publications/us-grain-exports-and-trade>

KSU Agriculture Today Podcast Link: <https://agtodayksu.libsyn.com/timeliness-of-corn-and-soybean-plantingworld-grain-supply-and-demand>

IGP Market Information: <http://www.dtnigp.com/index.cfm>

USDA Transportation Report: <https://www.ams.usda.gov/services/transportation-analysis/qtr>

USDA FAS Historical Grain Shipments: <https://apps.fas.usda.gov/export-sales/wkHistData.htm>,
<https://apps.fas.usda.gov/export-sales/complete.htm>

Contents

U.S. EXPORT ACTIVITY	1
➤ Export Sales	1
➤ Vessel Loadings	1
➤ Export Inspections	2
➤ BARGE MOVEMENTS	4
CEREAL GRAINS	6
COARSE GRAINS	8
OILSEED COMPLEX	12

- This summary based on reports for the 4th of Dec. 2025
- Outstanding Export Sales (Unshipped Balances) on the 28th of Nov. 2025
- Export Shipments in Current Marketing Year
- Daily Sales Reported for the 4th of Dec. 2025

U.S. EXPORT ACTIVITY

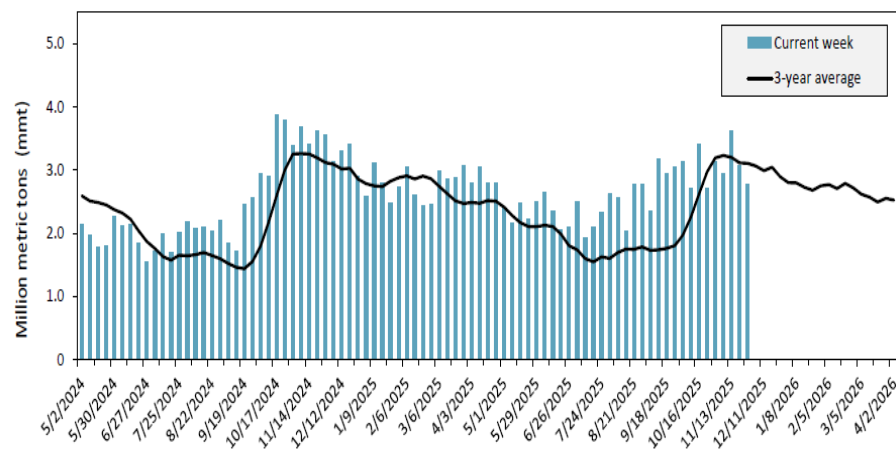
➤ Export Sales

For the week ending the 30th of October, unshipped balances of corn, soybeans, and wheat for marketing year (MY) 2025/26 totaled 39.99 mmts, up 2% from last week and down 2% from the same time last year.

- Net wheat export sales were 0.51 mmts, up 1% from last week.
- Net corn export sales for MY 2025/26 were 2 mmts, up 11% from last week.
- Net soybean export sales were 1.06 mmts, down 27% from last week.

➤ Vessel Loadings

Figure 17. U.S. grain inspected for export (wheat, corn, and soybeans)



Note: 3-year average consists of 4-week running average.

Source: USDA, Federal Grain Inspection Service.

➤ Export Inspections

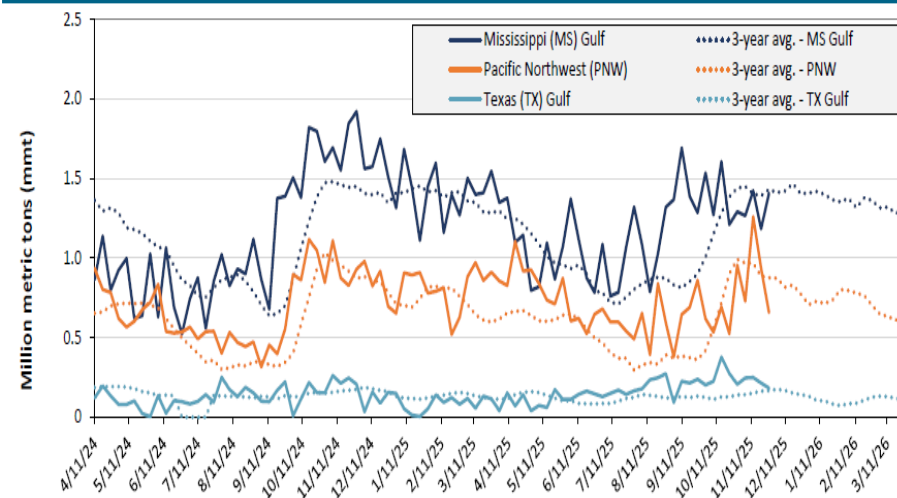
GRAINS INSPECTED AND/OR WEIGHED FOR EXPORT
REPORTED IN WEEK ENDING NOV 27, 2025
-- METRIC TONS --

GRAIN	WEEK ENDING			CURRENT	PREVIOUS
	11/27/2025	11/20/2025	11/28/2024	MARKET YEAR TO DATE	MARKET YEAR TO DATE
BARLEY	131	209	821	5,629	5,912
CORN	1,421,258	1,695,682	948,812	18,968,259	11,112,946
FLAXSEED	0	24	24	312	240
MIXED	0	0	0	0	49
OATS	0	299	0	4,190	148
RYE	0	0	0	0	0
SORGHUM	49,124	74,300	196,388	469,190	1,088,213
SOYBEANS	920,194	808,740	2,110,449	11,867,705	21,817,878
SUNFLOWER	0	0	0	0	0
WHEAT	384,881	480,429	298,623	13,228,425	11,027,844
Total	2,775,588	3,059,683	3,555,117	44,543,710	45,053,230

CROP MARKETING YEARS BEGIN JUNE 1 FOR WHEAT, RYE, OATS, BARLEY AND FLAXSEED; SEPTEMBER 1 FOR CORN, SORGHUM, SOYBEANS AND SUNFLOWER SEEDS. INCLUDES WATERWAY SHIPMENTS TO CANADA.

Source: https://www.ams.usda.gov/mnreports/wa_gr101.txt

Figure 18. U.S. grain inspections for U.S. Gulf and PNW (wheat, corn, and soybeans)



Source: USDA, Federal Grain Inspection Service.

Table 14. U.S. export balances and cumulative exports (1,000 metric tons)

Grain Exports		Wheat						Corn	Soybeans	Total
		Hard red winter (HRW)	Soft red winter (SRW)	Hard red spring (HRS)	Soft white wheat (SWW)	Durum	All wheat			
Current unshipped (outstanding) export sales	For the week ending 10/30/2025	1,801	642	1,216	1,465	104	5,228	25,136	9,629	39,992
	This week year ago	916	706	1,484	1,128	101	4,335	20,915	15,563	40,812
	Last 4 wks. as % of same period 2024/25	191	85	79	126	81	116	116	62	95
Current shipped (cumulative) exports sales	2025/26 YTD	4,639	1,645	2,945	2,158	190	11,577	12,225	7,568	31,369
	2024/25YTD	2,202	1,542	3,038	2,484	129	9,394	7,672	12,333	29,399
	YTD 2025/26 as % of 2024/25	211	107	97	87	147	123	159	61	107
	Total 2024/25	5,377	3,106	6,560	5,730	335	21,107	69,081	50,106	140,295
	Total 2023/24	3,535	4,260	6,314	3,906	526	18,540	54,277	44,510	117,328

Note: The marketing year for wheat is June 1 to May 31 and, for corn and soybeans, September 1 to August 31. YTD = year-to-date; wks. = weeks.

Source: USDA, Foreign Agricultural Service.

Table 18. Grain inspections for export by U.S. port region (1,000 metric tons)

Port regions	Commodity	For the week ending 11/27/2025	Previous week*	Current week as % of previous	2025 YTD*	2024 YTD*	2025 YTD as % of 2024 YTD	Last 4-weeks as % of:		2024 total*
								Last year	Prior 3-yr. avg.	
Pacific Northwest	Corn	483	571	85	21,210	12,662	168	457	753	13,987
	Soybeans	0	102	0	2,630	8,875	30	8	8	10,445
	Wheat	175	264	66	11,049	10,559	105	108	118	11,453
	All grain	658	937	70	35,092	33,248	106	92	102	37,186
Mississippi Gulf	Corn	608	666	91	33,996	24,781	137	126	177	27,407
	Soybeans	729	430	170	20,472	24,946	82	53	61	29,741
	Wheat	70	89	78	3,751	4,352	86	146	229	4,523
	All grain	1,407	1,185	119	58,260	54,197	107	75	92	61,789
Texas Gulf	Corn	0	35	0	567	542	105	66	83	570
	Soybeans	68	53	127	1,214	550	221	184	309	741
	Wheat	78	65	121	4,469	1,700	263	131	137	1,940
	All grain	183	215	85	7,071	6,379	111	96	133	6,965
Interior	Corn	274	375	73	13,969	12,472	112	134	143	13,463
	Soybeans	114	166	69	6,875	7,136	96	73	84	8,059
	Wheat	41	36	115	2,810	2,720	103	93	97	2,989
	All grain	442	603	73	24,140	22,579	107	107	117	24,791
Great Lakes	Corn	0	44	0	293	193	152	99	250	271
	Soybeans	0	0	n/a	62	108	58	n/a	n/a	127
	Wheat	21	27	79	334	531	63	162	138	653
	All grain	21	70	30	690	832	83	117	111	1,060
Atlantic	Corn	56	5	n/a	557	381	146	472	643	410
	Soybeans	9	58	15	834	940	89	47	40	1,272
	Wheat	0	0	n/a	81	72	113	103	310	73
	All grain	65	63	102	1,472	1,394	106	72	63	1,754
All Regions	Corn	1,421	1,696	84	70,592	51,033	138	179	239	56,109
	Soybeans	920	809	114	32,287	42,974	75	45	50	50,865
	Wheat	385	480	80	22,493	19,934	113	115	128	21,631
	All grain	2,776	3,074	90	126,924	119,050	107	86	100	134,016

*Note: Data include revisions from prior weeks; "All grain" includes corn, soybeans, wheat, sorghum, oats, barley, rye, sunflower, flaxseed, and mixed grains; "All regions" includes listed regions and other minor regions not listed; YTD = year-to-date; n/a = not available or no change. A "-" in the table indicates a percentage change with a near-zero denominator for the period.
Source: USDA, Federal Grain Inspection Service.

Ocean

For the week ending the 27th of November, 26 oceangoing grain vessels were loaded in the Gulf—32% fewer than the same period last year. Within the next 10 days (starting the 28th of November), 49 vessels were expected to be loaded—4% more than the same period last year.

Barge

For the week ending the 29th of November, barged grain movements totaled 604,900 tons. This was 31% less than the previous week and down 24% from the same period last year.

For the week ending the 29th of November, 370 grain barges moved down river—233 fewer than last week. There were 964 grain barges unloaded in the New Orleans region, 46% more than last week.

Rail

U.S. Class I railroads originated 31,058 grain carloads during the week ending the 22nd of November. This was a 2% decrease from the previous week, 8% more than last year, and 16% more than the 3-year average.

Average December shuttle secondary railcar bids/offers (per car) were \$563 above tariff for the week ending the 27th of November. This was \$138 more than last week and \$588 more than this week last year. Average non-shuttle secondary railcar bids/offers per car were \$171 above tariff. This was \$4 more than last week and \$179 more than this week last year.

Week ending 11/27/25 inspections (mmt):				
MS Gulf: 1.41				
PNW: 0.66				
TX Gulf: 0.18				
Percent change from:	MS Gulf	TX Gulf	U.S. Gulf	PNW
Last week	up 19	down 15	up 14	down 30
Last year (same 7 days)	down 34	down 25	down 33	down 38
3-year average (4-week moving average)	down 2	up 9	un changed	down 25

Table 19. Weekly port region grain ocean vessel activity (number of vessels)

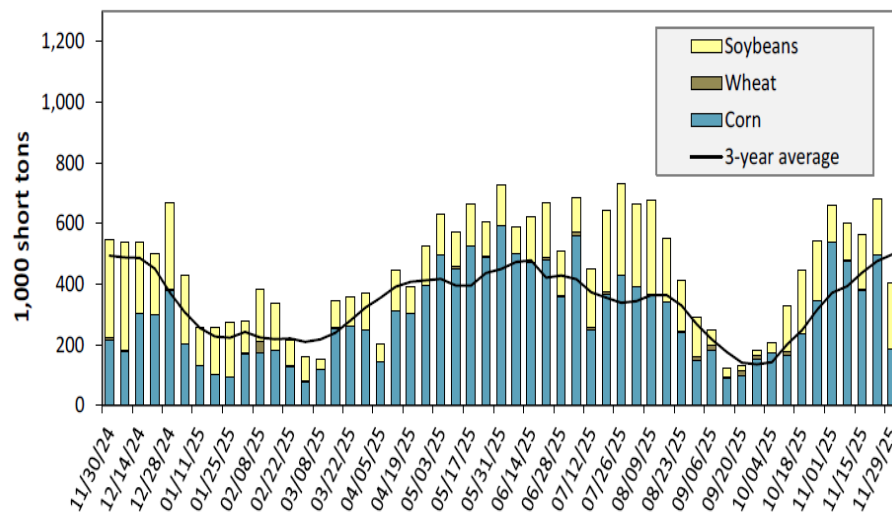
Date	Gulf			Pacific Northwest
	In port	Loaded 7-days	Due next 10-days	In port
11/27/2025	26	26	49	n/a
11/20/2025	17	25	42	16
2024 range	(11...45)	(18...38)	(29...61)	(3...25)
2024 average	28	28	45	13

Note: The data are voluntarily submitted and may not be complete.

Source: USDA, Agricultural Marketing Service.

➤ **BARGE MOVEMENTS**

Figure 12. Barge movements on the Mississippi River (Locks 27-Granite City, IL)



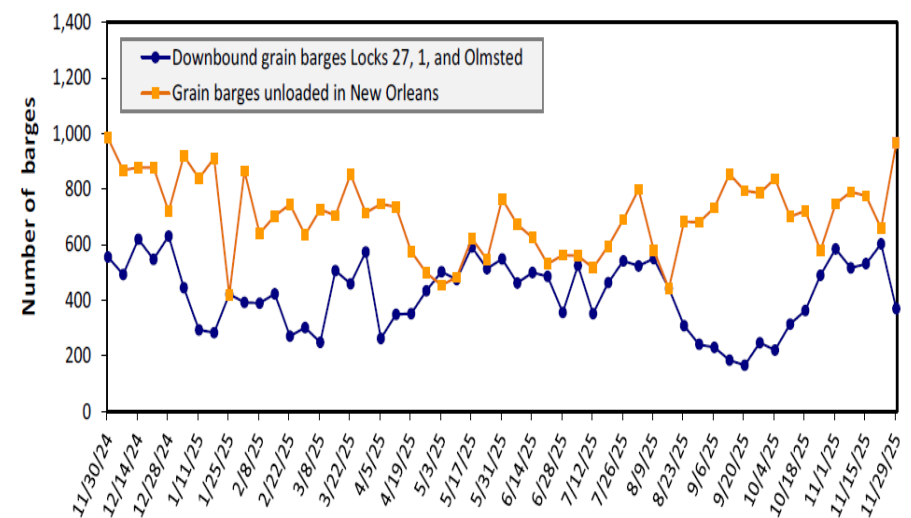
Note: The 3-year average is a 4-week moving average.

Source: U.S. Army Corps of Engineers.

- For the week ending the 29th of November, barged grain movements totaled 604,900 tons. This was 31% less than the previous week and down 24% from the same period last year.

- For the week ending the 29th of November, 370 grain barges moved down river—233 fewer than last week.
- There were 964 grain barges unloaded in the New Orleans region, 46% more than last week.

Figure 14. Grain barges for export in New Orleans region



Note: Olmsted = Olmsted Locks and Dam.

Source: U.S. Army Corps of Engineers and USDA, Agricultural Marketing Service.

Table 10. Barged grain movements (1,000 tons)

For the week ending 11/29/2025	Corn	Wheat	Soybeans	Other	Total
Mississippi River (Rock Island, IL (L15))	72	6	80	0	159
Mississippi River (Winfield, MO (L25))	125	2	96	0	222
Mississippi River (Alton, IL (L26))	137	0	158	0	296
Mississippi River (Granite City, IL (L27))	187	0	216	3	406
Illinois River (La Grange)	42	0	64	0	105
Ohio River (Olmsted)	66	14	115	4	199
Arkansas River (L1)	0	0	0	0	0
Weekly total - 2025	253	14	331	7	605
Weekly total - 2024	303	19	471	0	793
2025 YTD	18,238	1,184	10,081	155	29,658
2024 YTD	13,633	1,484	10,953	185	26,255
2025 as % of 2024 YTD	134	80	92	84	113
Last 4 weeks as % of 2024	127	107	67	167	95
Total 2024	15,251	1,564	12,598	214	29,626

Note: "Other" refers to oats, barley, sorghum, and rye. Total may not add up due to rounding. YTD = year to date. Weekly total, YTD, and calendar year total include Mississippi River lock 27, Ohio River Olmsted lock, and Arkansas Lock 1. "L" (as in "L15") refers to a lock, locks, or lock and dam facility.

Source: U.S. Army Corps of Engineers.

CEREAL GRAINS

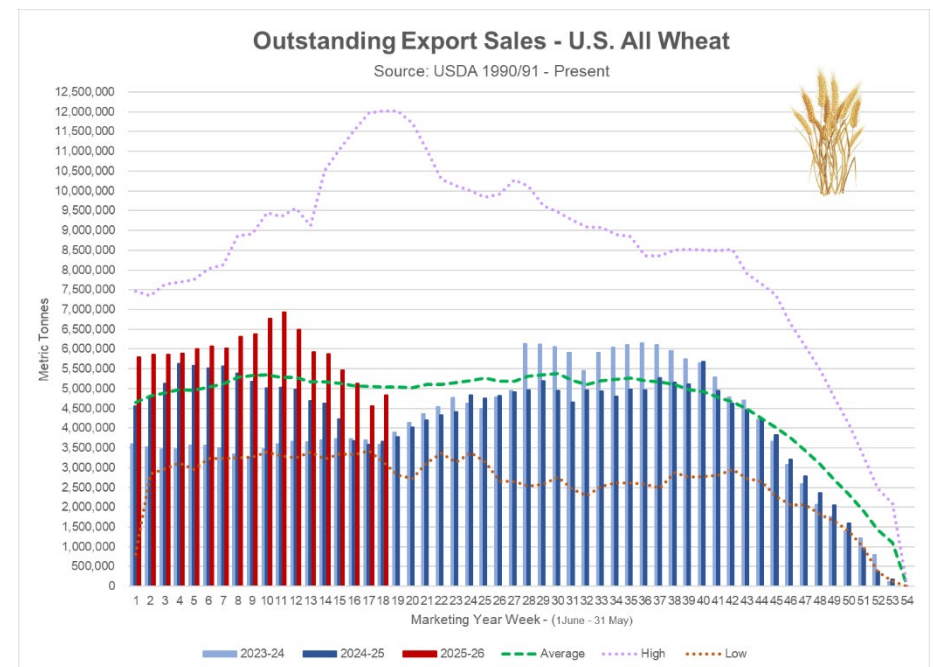
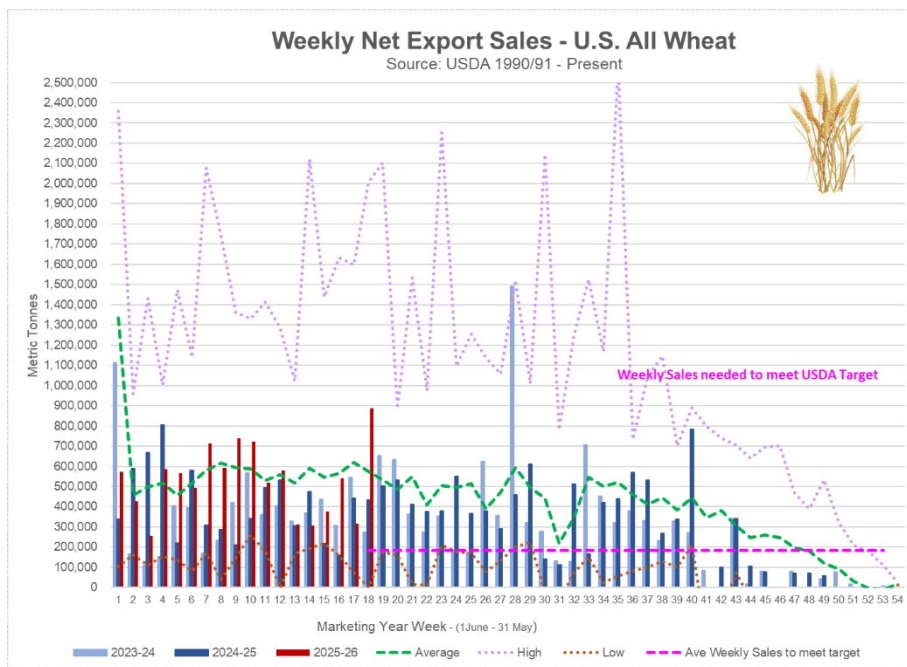
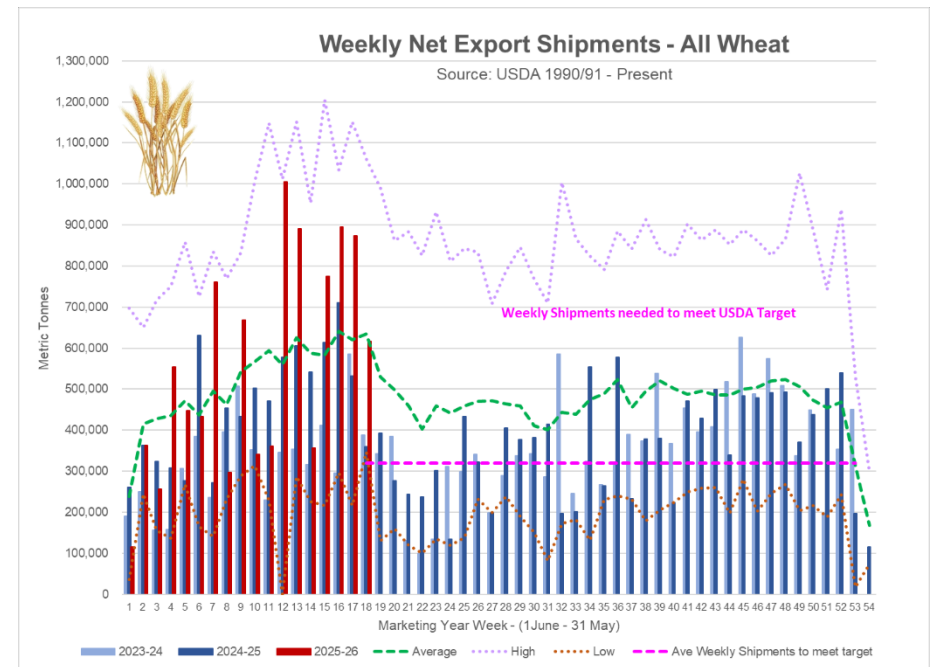
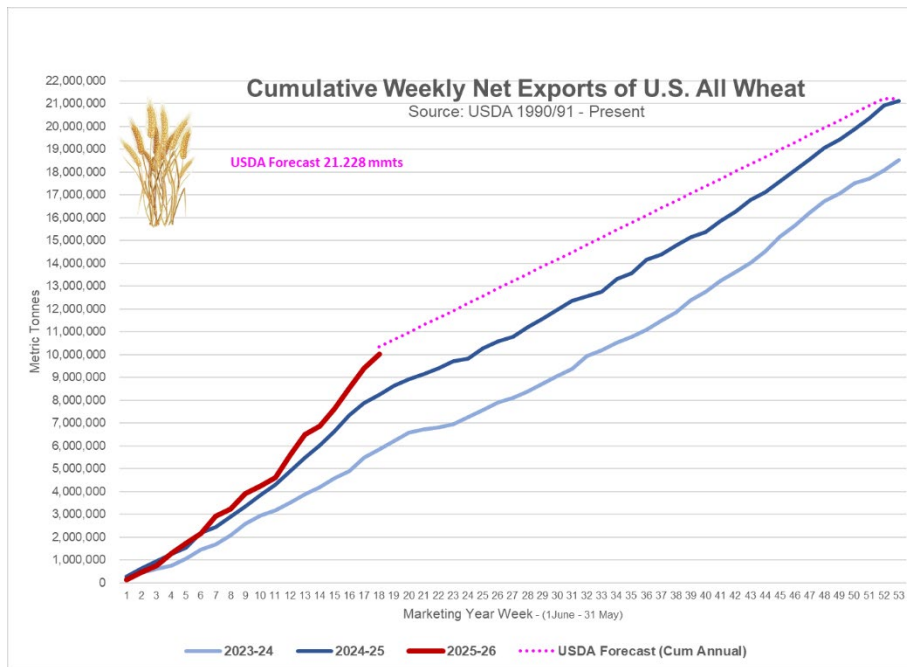
Table 17. Top 10 importers of all U.S. wheat

For the week ending 10/30/2025	Total commitments (1,000 mt)		% change current MY from last MY	Exports 3-year average 2022-24 (1,000 mt)
	YTD MY 2025/26	YTD MY 2024/25		
Mexico	2,812	2,577	9	3,358
Philippines	1,934	1,808	7	2,473
Japan	1,270	1,272	-0	2,045
China	0	139	-100	1,137
Korea	1,213	1,220	-1	1,674
Taiwan	578	642	-10	935
Thailand	515	538	-4	667
Nigeria	1,117	314	255	629
Indonesia	929	537	73	518
Colombia	510	282	81	489
Top 10 importers	10,876	9,329	17	13,926
Total U.S. wheat export sales	16,805	13,729	22	19,135
% of YTD current month's export projection	69%	61%	-	-
Change from prior week	505	375	-	-
Top 10 importers' share of U.S. wheat export sales	65%	68%	-	73%
USDA forecast, November 2025	24,494	22,480	9	-

Note: The top 10 importers are based on USDA, Foreign Agricultural Service (FAS) marketing year ranking reports for marketing year (MY) 2024/25 (June 1 – May 31). "Total commitments" = cumulative exports (shipped) + outstanding sales (unshipped), from FAS weekly export sales report, or export sales query. Total commitments' change (net sales) from prior week could include revisions from previous week's outstanding sales or accumulated sales. In rightmost column, "Exports" = accumulated exports (as defined in FAS marketing year ranking reports). mt = metric ton; yr. = year; avg. = average; YTD = year to date; "-" = not applicable.

Source: USDA, Foreign Agricultural Service.

GTR 12-4-25



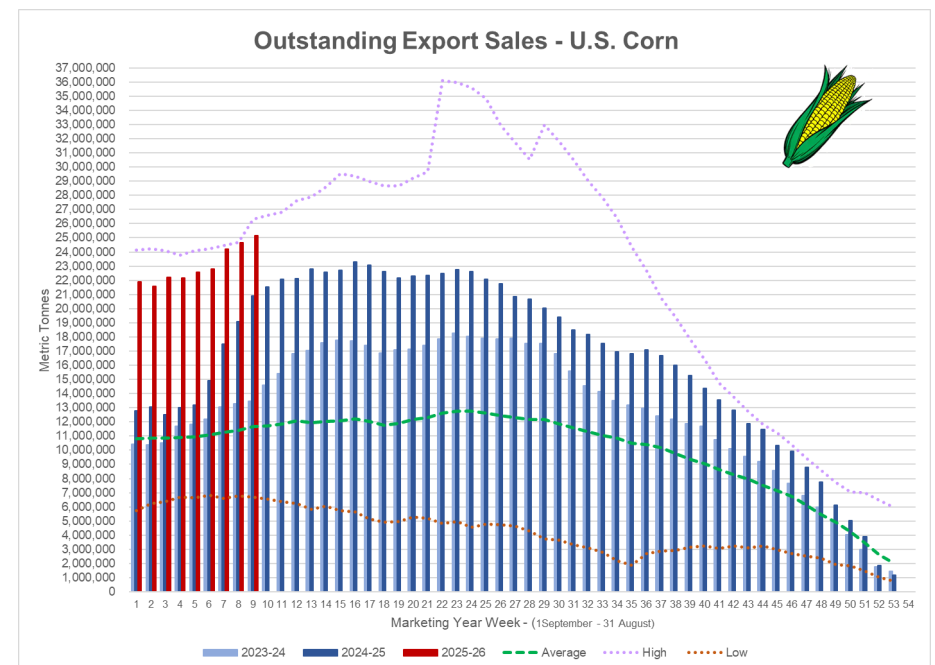
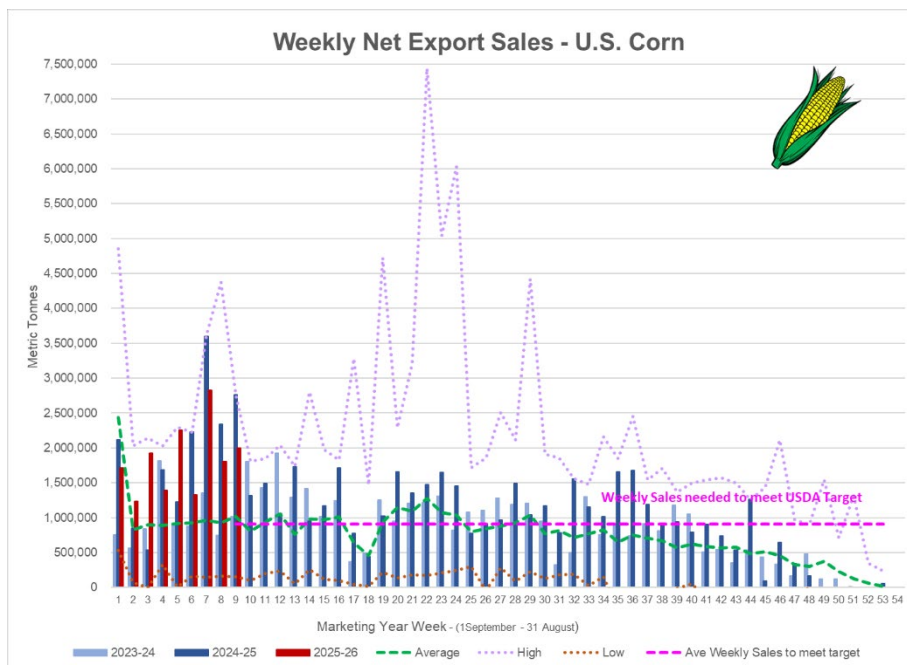
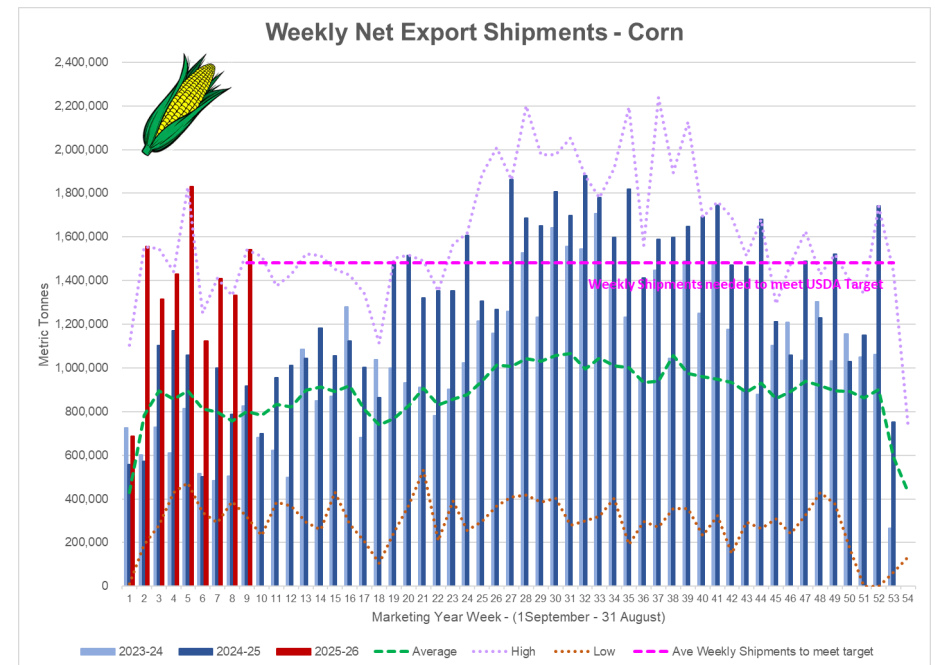
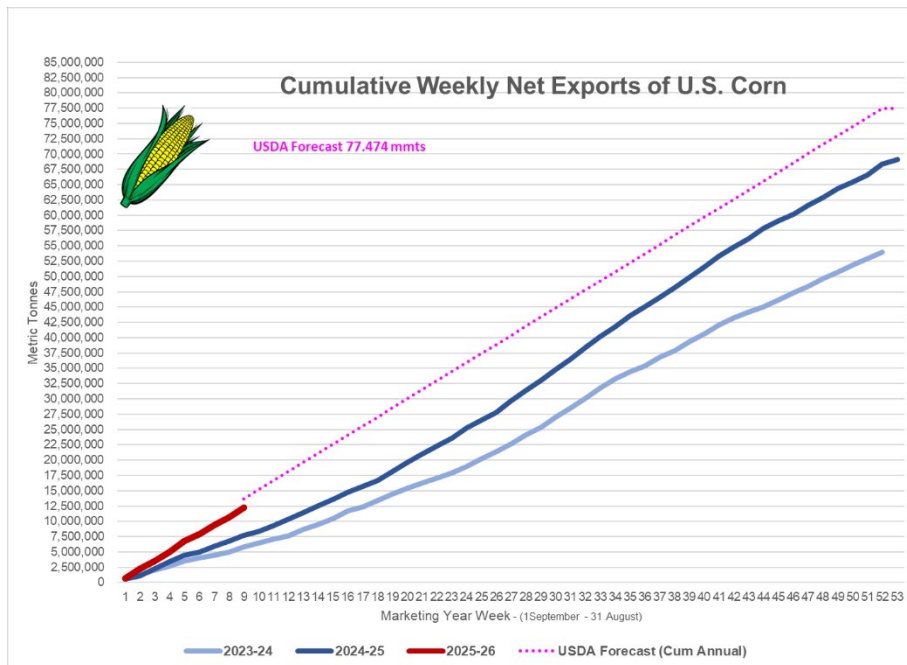
COARSE GRAINS

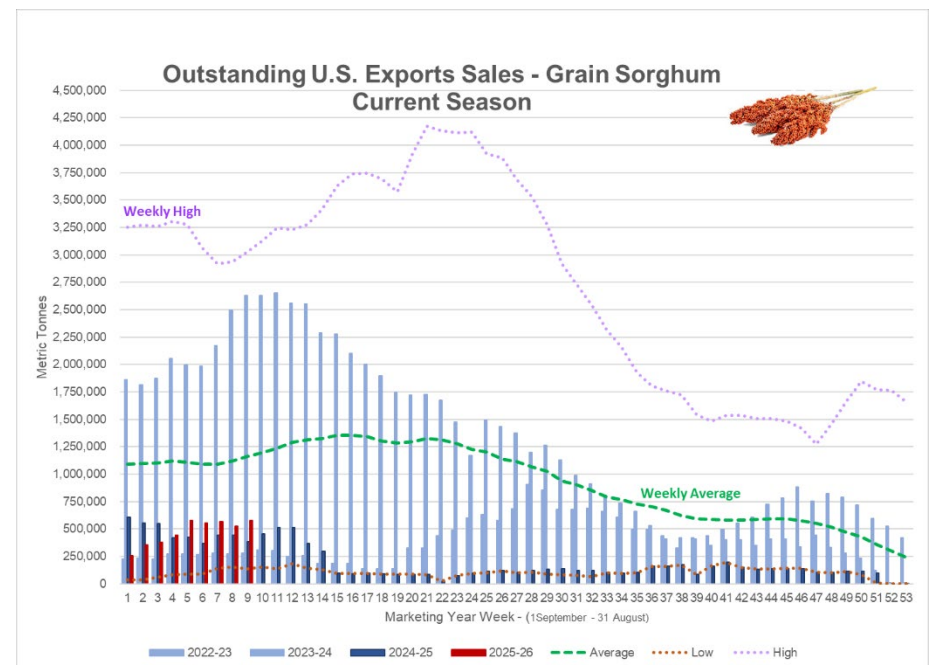
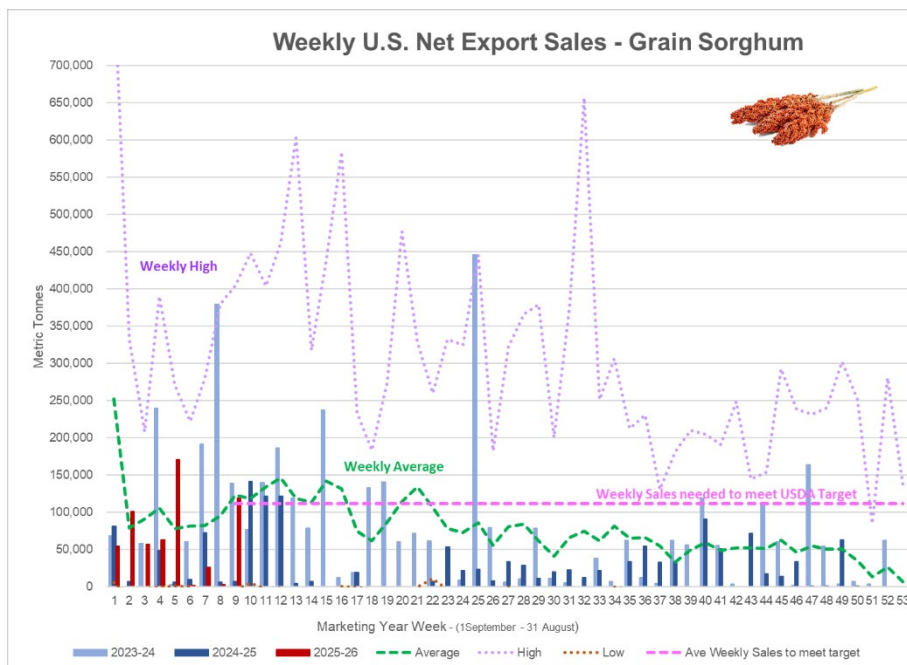
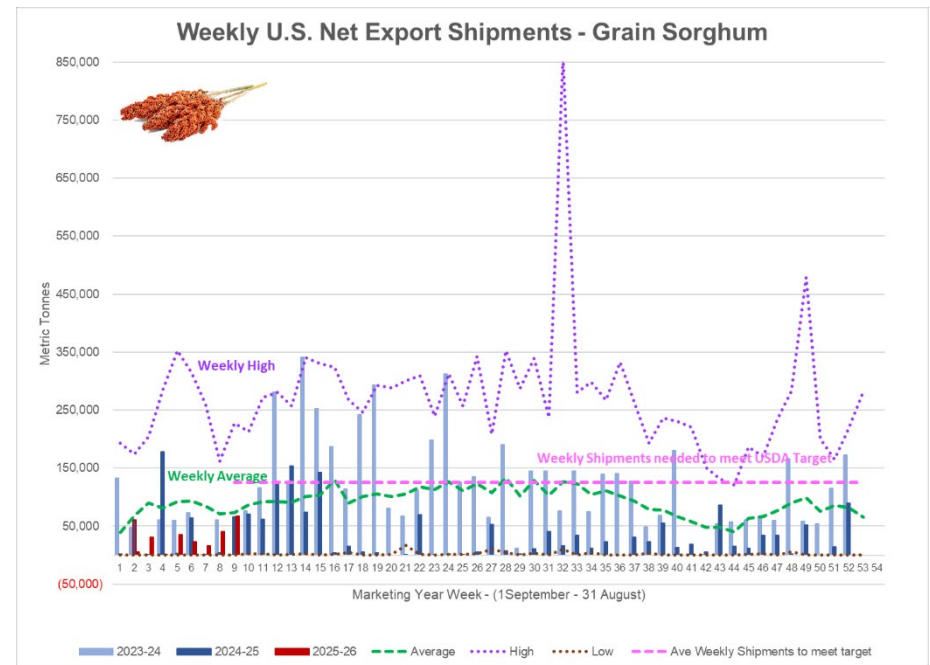
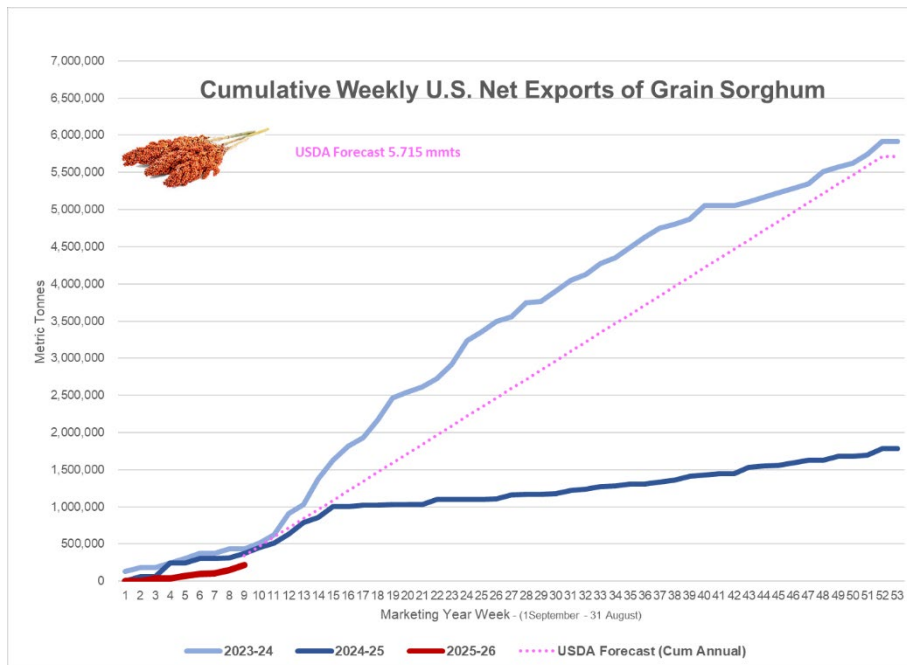
Table 15. Top 5 importers of U.S. corn

For the week ending 10/30/2025	Total commitments (1,000 mt)		% change current MY from last MY	Exports 3-year average 2022-24 (1,000 mt)
	YTD MY 2025/26	YTD MY 2024/25		
Mexico	13,646	11,949	14	19,839
Japan	4,553	3,628	26	10,478
Colombia	2,655	2,319	14	5,493
China	0	25	-100	3,461
Korea	2,693	339	694	3,127
Top 5 importers	20,854	17,921	16	39,272
Total U.S. corn export sales	37,361	28,586	31	54,276
% of YTD current month's export projection	48%	40%	-	-
Change from prior week	1,995	2,767	-	-
Top 5 importers' share of U.S. corn export sales	56%	63%	-	72%
USDA forecast November 2025	78,109	71,886	9	-
Corn use for ethanol USDA forecast, November 2025	142,240	138,075	3	-

Note: The top 5 importers are based on USDA, Foreign Agricultural Service (FAS) marketing year ranking reports for marketing year (MY) 2024/25 (September 1 – August 31). "Total commitments" = cumulative exports (shipped) + outstanding sales (unshipped), from FAS weekly export sales report, or export sales query. Total commitments' change (net sales) from prior week could include revisions from previous week's outstanding sales or accumulated sales. In rightmost column, "Exports" = accumulated exports (as defined in FAS marketing year ranking reports). mt = metric ton; yr. = year; avg. = average; YTD = year to date; "-" = not applicable.

Source: USDA, Foreign Agricultural Service.





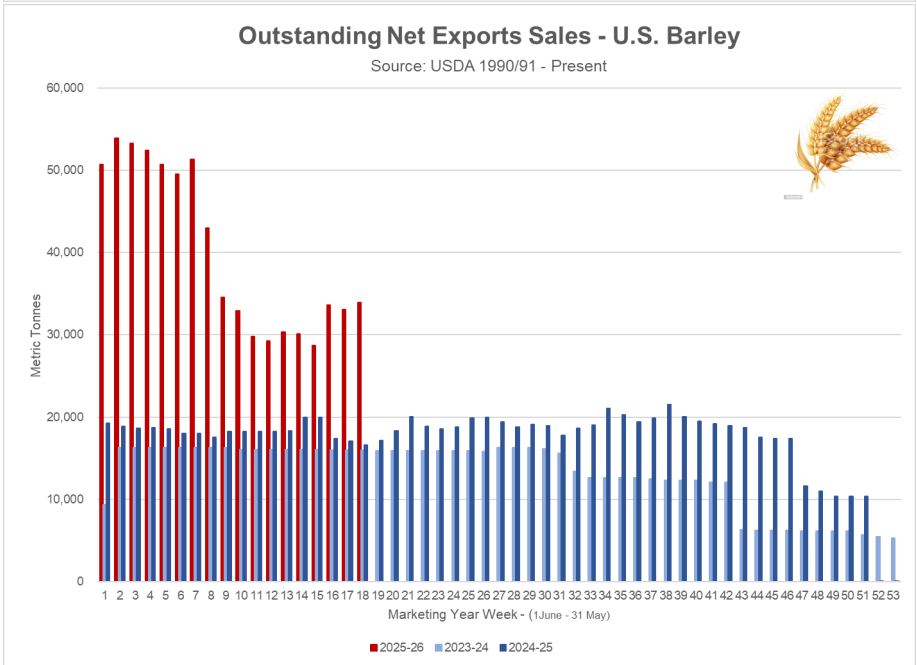
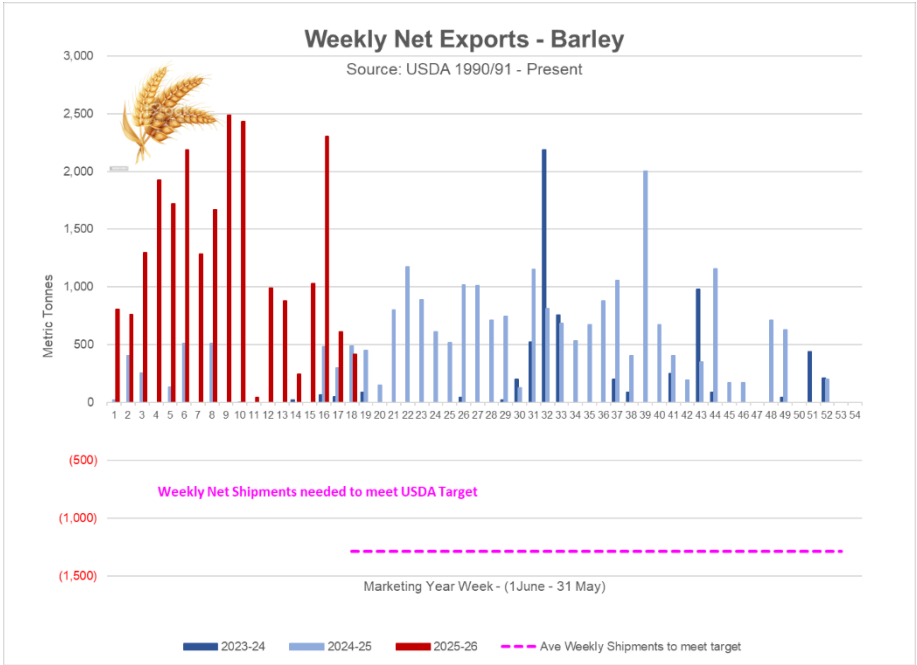
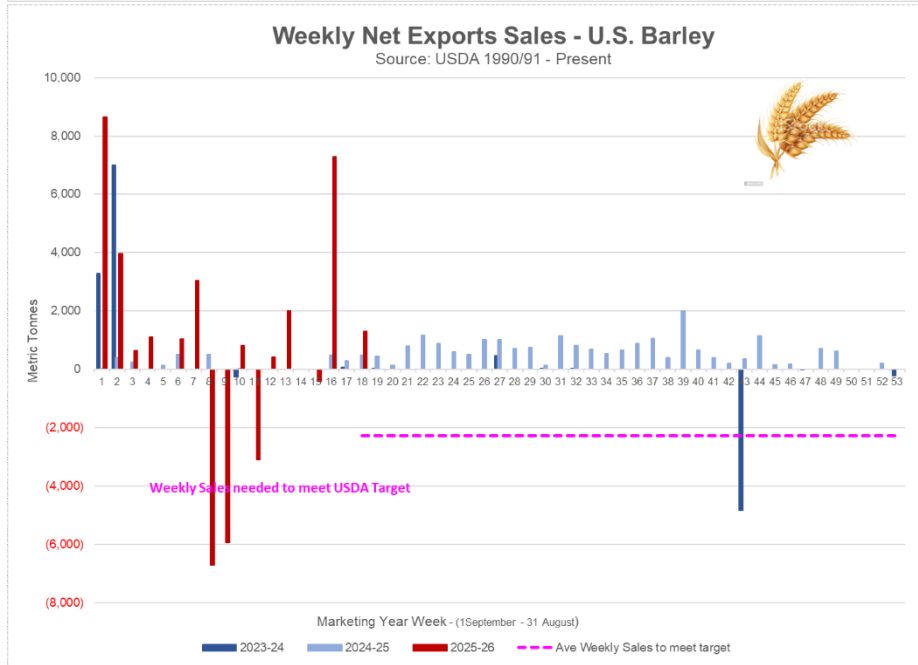
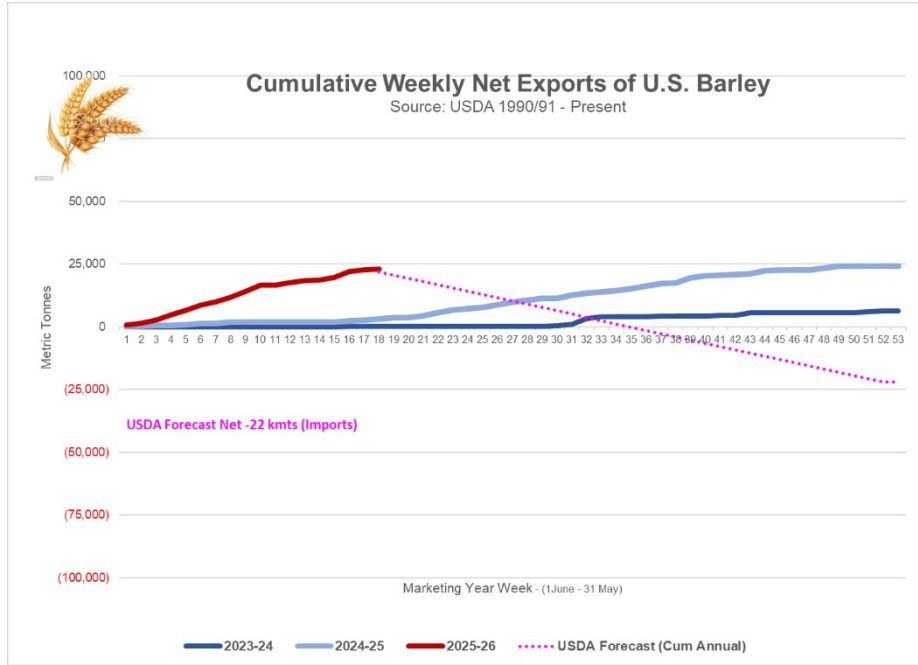


Table 16. Top 5 importers of U.S. soybeans

For the week ending 10/30/2025	Total commitments (1,000 mt)		% change current MY from last MY	Exports 3-year average 2022-24 (1,000 mt)
	YTD MY 2025/26	YTD MY 2024/25		
China	232	12,348	-98	26,078
Mexico	3,073	2,129	44	4,762
Japan	849	861	-1	2,107
Egypt	1,487	955	56	2,098
Indonesia	614	579	6	1,997
Top 5 importers	6,254	16,871	-63	37,042
Total U.S. soybean export sales	17,196	27,896	-38	48,941
% of YTD current month's export projection	39%	55%	-	-
Change from prior week	1,062	2,037	-	-
Top 5 importers' share of U.S. soybean export sales	36%	60%	-	76%
USDA forecast, November 2025	44,497	51,029	-13	-

Note: The top 5 importers are based on USDA, Foreign Agricultural Service (FAS) marketing year ranking reports for marketing year (MY) 2024/25 (September 1 – August 31). "Total commitments" = cumulative exports (shipped) + outstanding sales (unshipped), from FAS weekly export sales report, or export sales query. Total commitments' change (net sales) from prior week could include revisions from previous week's outstanding sales or accumulated sales. In rightmost column, "Exports" = accumulated exports (as defined in FAS marketing year ranking reports). mt = metric ton; yr. = year; avg. = average; YTD = year to date; "-" = not applicable.

Source: USDA, Foreign Agricultural Service.

