

U.S. Ethanol & Biodiesel Trends in Prices & Profitability

WILL Radio (Illinois) & KSU www.AgManager.info

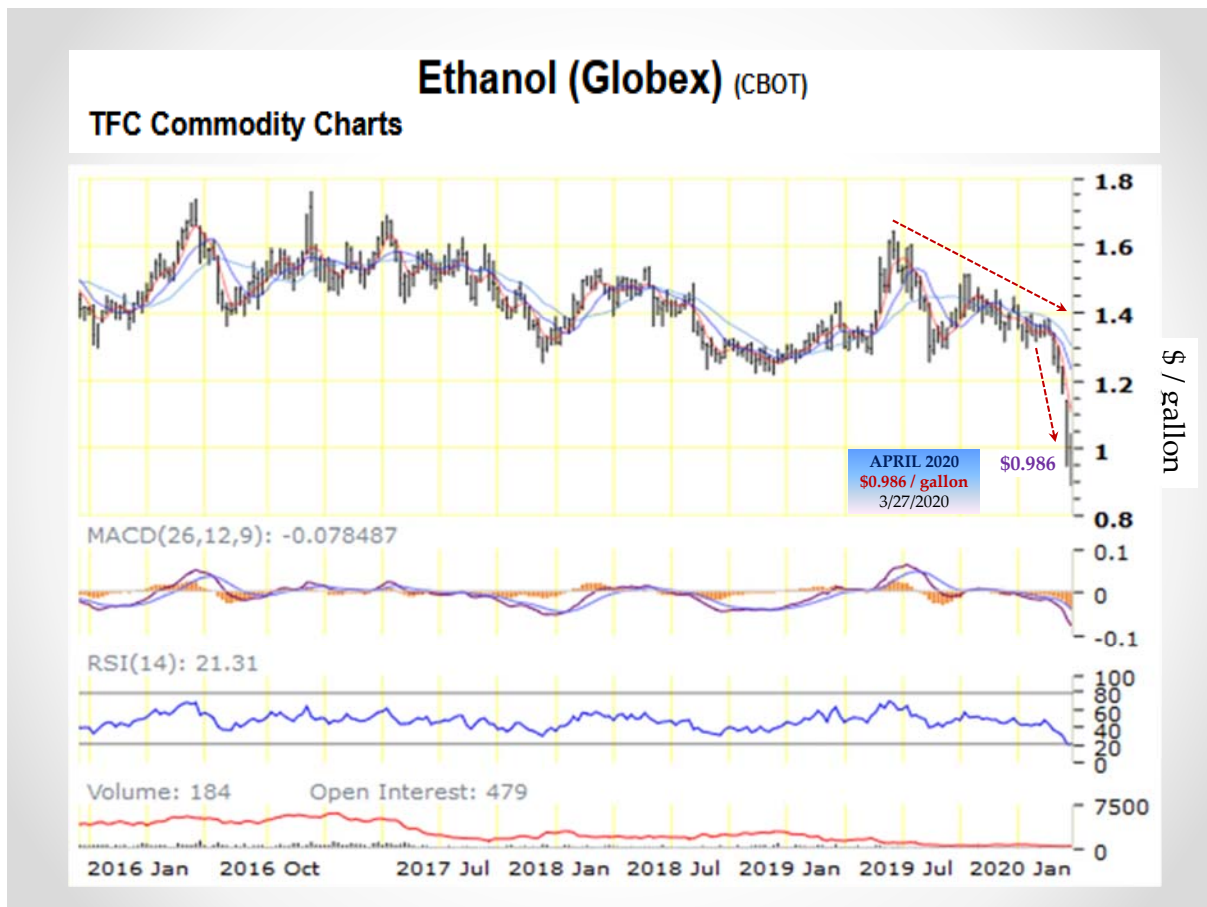
March 30, 2020



Daniel O'Brien, Ph.D.
Extension Agricultural Economist
Kansas State University

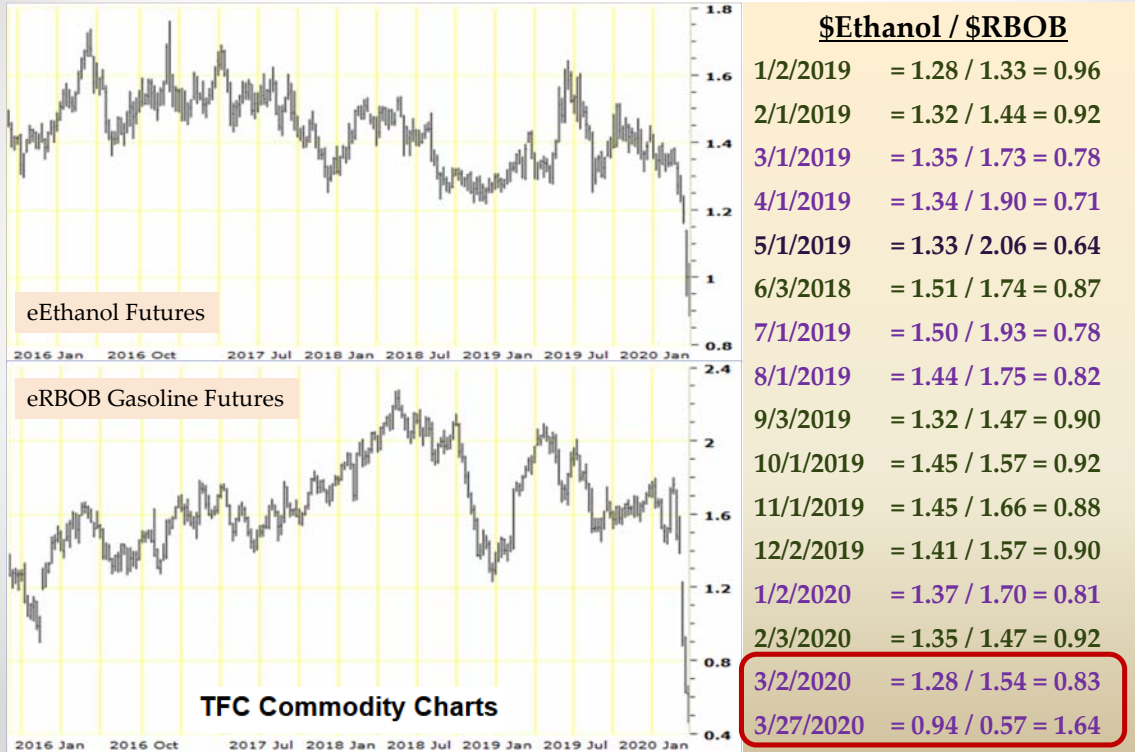
•

•



Ethanol & RBOB Futures

Weekly Charts: January 2016 – March 27, 2020



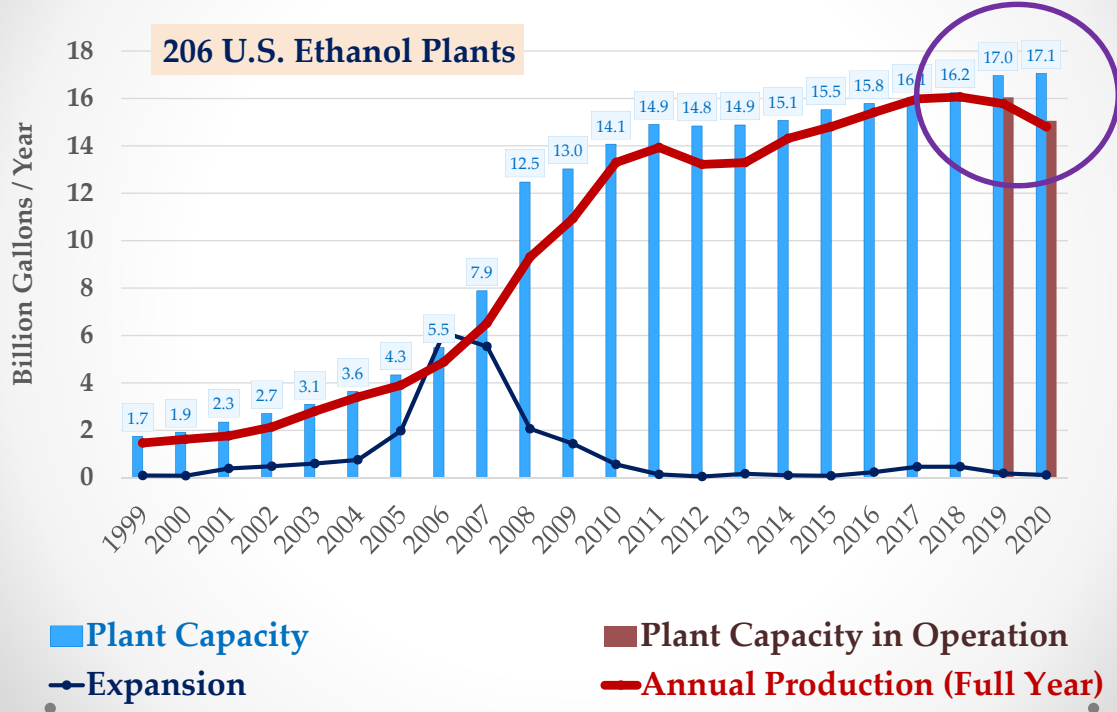
Retail Diesel & Gasoline Prices

Weekly Continuous Chart: April 5, 1993 through March 23, 2020



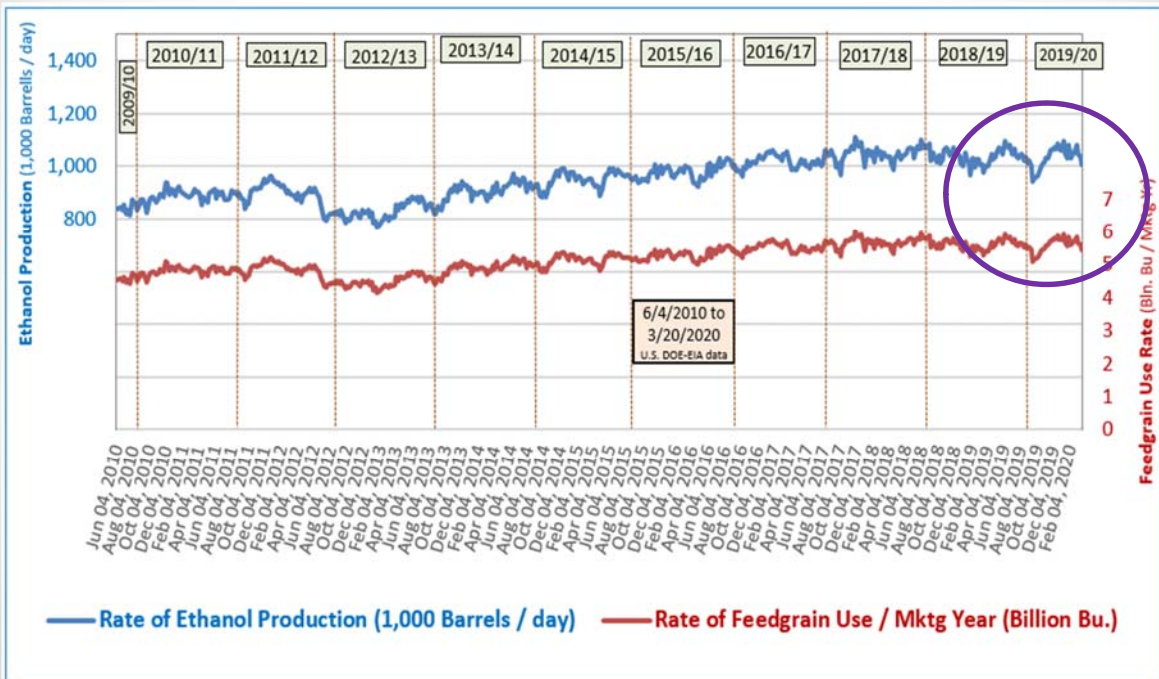
U.S. Ethanol Capacity & Production

Source: Renewable Fuels Association – As of March 27, 2020

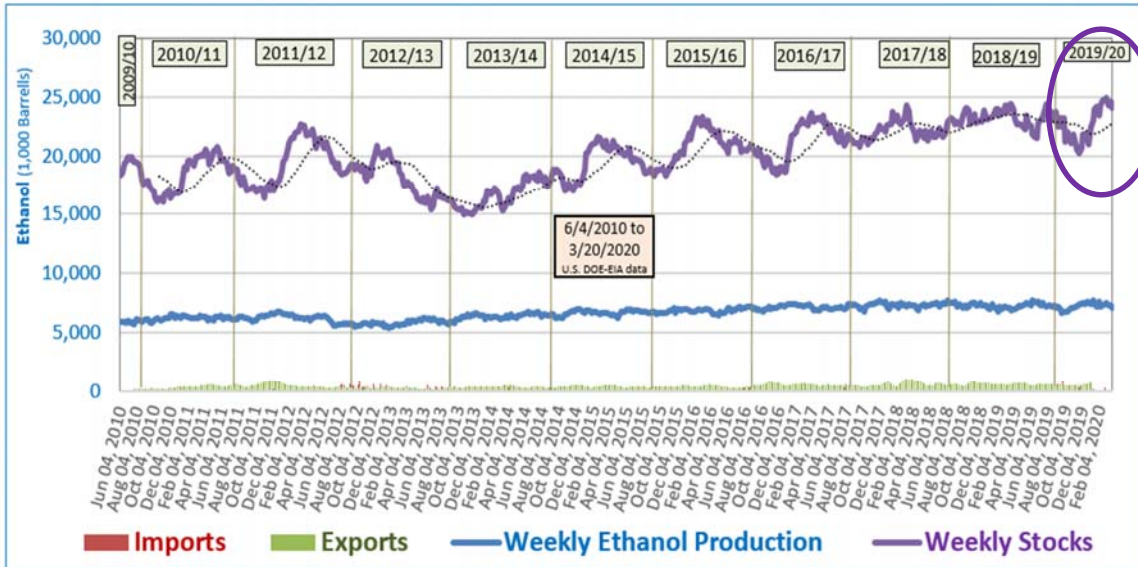


U.S. Ethanol Production & Corn Use

Weekly EIA ethanol data & KSU corn use est's. (6/4/2010 thru 3/20/2020)



Weekly U.S. Ethanol Production, Imports, Exports & Stocks (thru 3/20/2020)

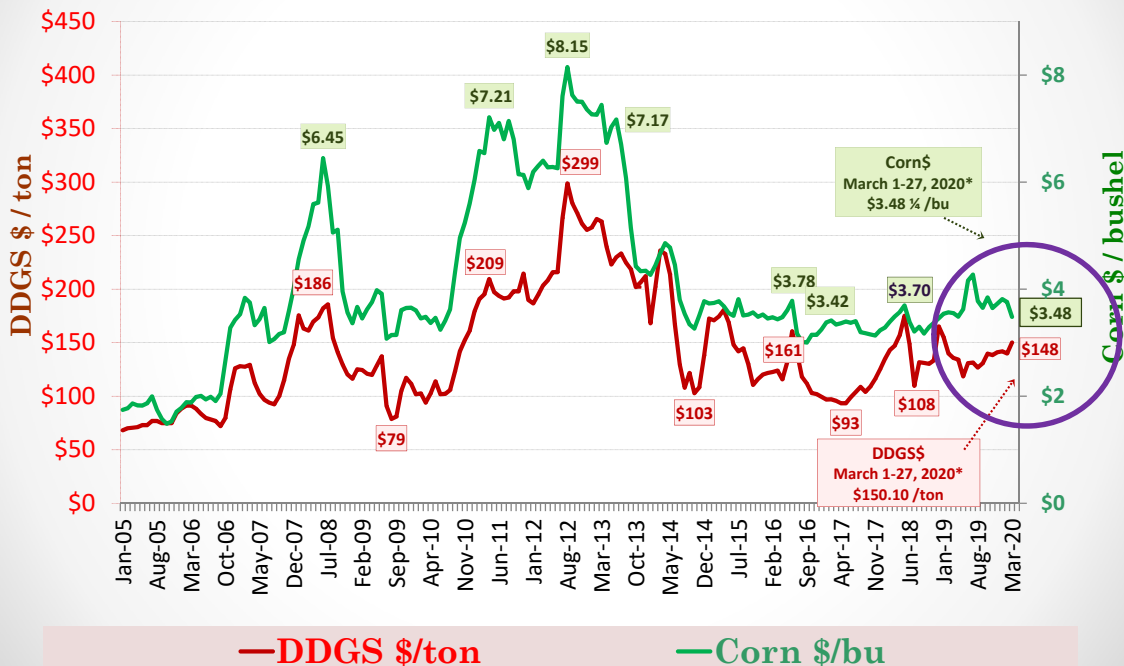


•

•

Ethanol DDGS & Corn Input Prices

ISU Ethanol Plant Model (January 2005 – February 21, 2020)

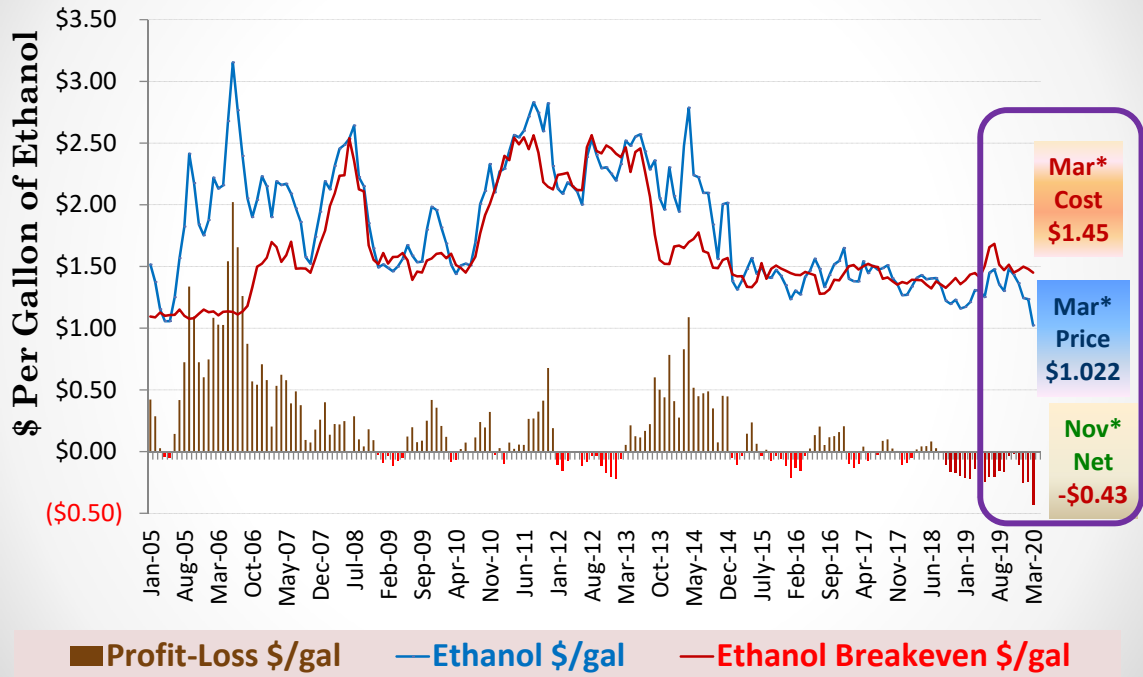


•

•

Ethanol Price, Cost & Profits

ISU Ethanol Plant Model (January 2005 – March 27, 2020)

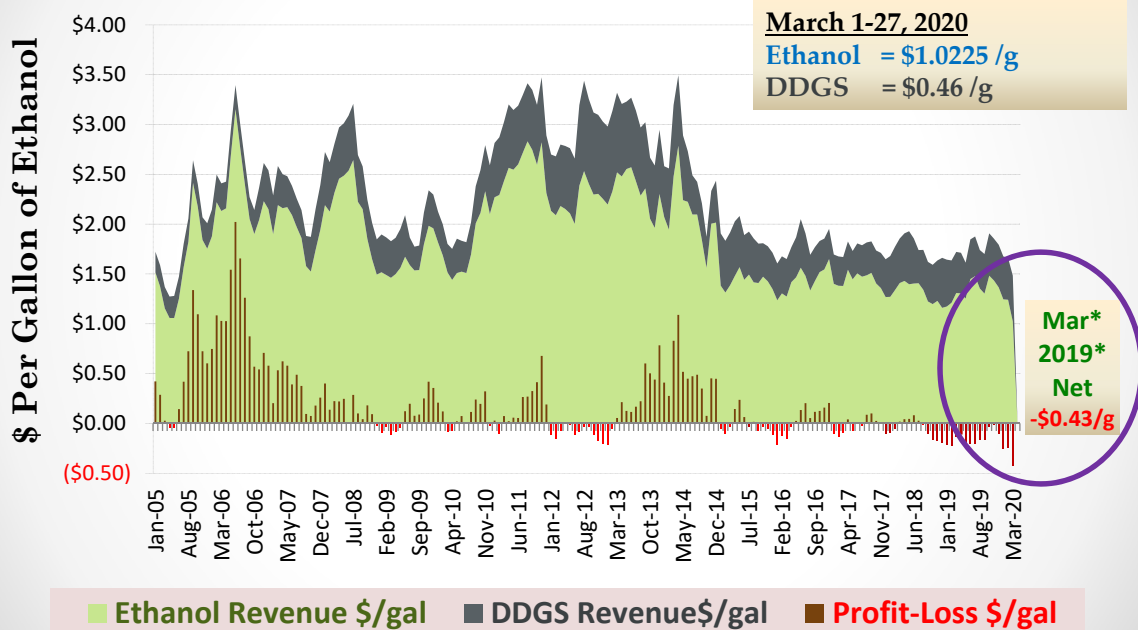


■ Profit-Loss \$/gal — Ethanol \$/gal — Ethanol Breakeven \$/gal



Ethanol Revenues & Net Returns

ISU Ethanol Plant Model (January 2005 – March 27, 2020)



March 1-27, 2020
Ethanol = \$1.0225 /g
DDGS = \$0.46 /g

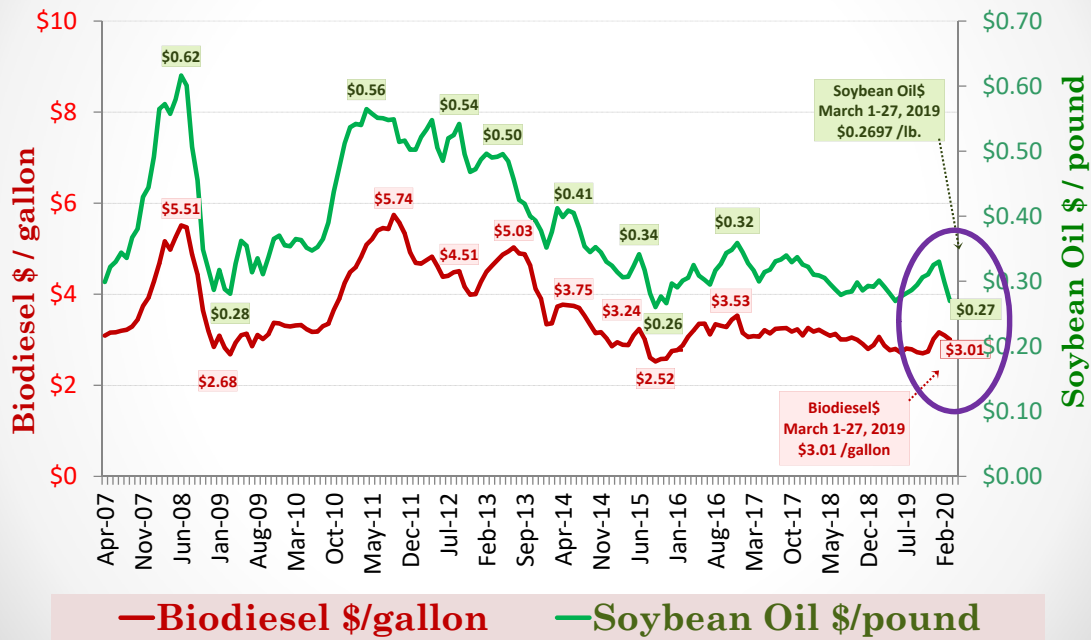
Mar* 2019*
Net
-\$0.43/g

■ Ethanol Revenue \$/gal ■ DDGS Revenue \$/gal ■ Profit-Loss \$/gal



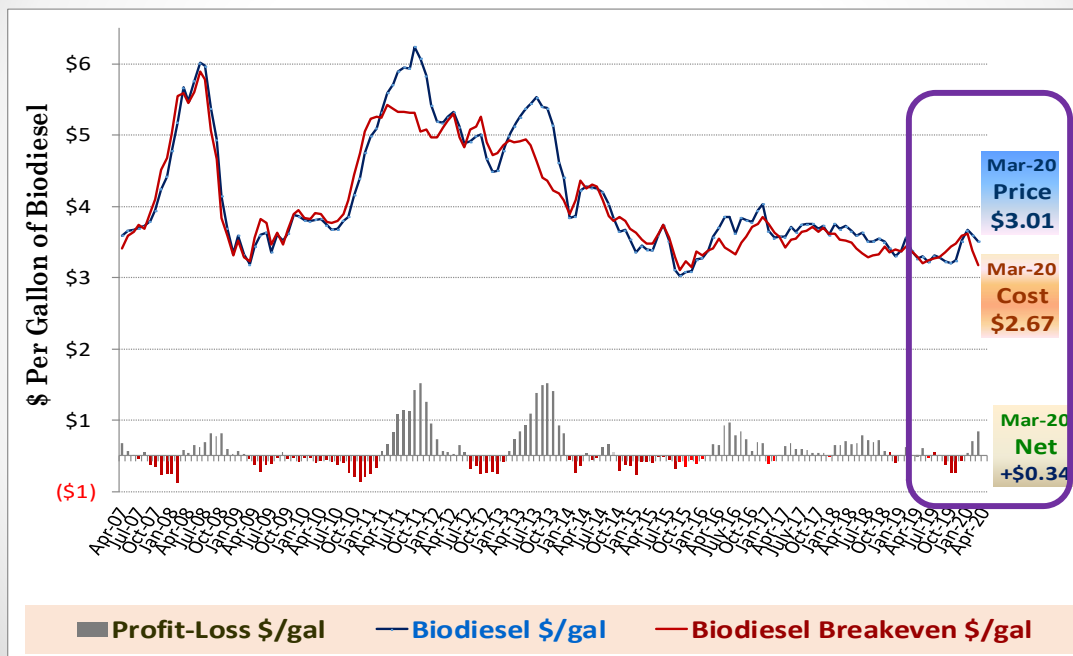
Biodiesel & Soybean Oil Prices

ISU Biodiesel Plant Model (April 2007 – March 27, 2020)



Biodiesel Price, Cost & Profits

ISU Biodiesel Plant Model (April 2007 – March 27, 2020)





Questions?



Daniel O'Brien – Extension Agricultural Economist

Kansas State University

dobrien@ksu.edu

KSUGrains on Twitter & Facebook

www.AgManager.info



KANSAS STATE
UNIVERSITY

Department of Agricultural Economics