

MANAGING THE RISK – CAPTURING THE OPPORTUNITY IN CROP FARMING

by

Michael Boehlje and Brent Gloy
Center for Commercial Agriculture
Purdue University

Farming has always been a risky business with the returns to reward that risk available for only brief periods of time. The risk in agriculture today, particularly in crop production, is greater than it has been in the past, but there is opportunity to be rewarded for taking that risk. This brief article focuses on several management strategies farmers can implement in these increasingly turbulent times.

The Risk – The Rewards

The risk for a farming operation generally comes from two sources – operations and financing. Operational risk results from price, cost and yield fluctuations, whereas financial risk is created by the fixed nature of interest obligations on debt funds used to finance the business. Each of these sources of risk will be discussed in turn.

As to operating risk, output price volatility has increased dramatically in recent years. When measured by daily price movements in the futures markets, the range in monthly cash bid prices, or any other metric one would choose, output prices have become quite variable in agriculture. Some would argue that price fluctuations are more than double what they were 5-10 years ago. Yield variability depends largely on weather conditions – erratic and intense rain-fall patterns in the Spring and Fall of the last two years have resulted in significant variability and yields across counties, and even within the same field for many farmers compared to the past.

In addition to output price variability, input prices have also been quite variable. The fluctuations in fertilizer, chemical and energy costs have been the most dramatic. To date, seed, equipment and land costs have not fluctuated as much, but have been in a general upward trend. The resulting volatility in operating margins (price minus cost) has been even more dramatic than that of prices, costs or yields. In general, volatility in operating margins has more than doubled, and some have argued that they have increased by as much as 3 to 4 times compared to the past. There is no doubt that the operating risk in grain farming has increased dramatically in recent times.

The variability in operating margins can be clearly seen in Figure 1 which shows the budgeted or expected earnings for a corn-soybean rotation on high-quality Indiana farmland over the last 20 years. The variability in earnings shown in Figure 1 is largely a function of changes in input and output prices. Recently, the expected earnings from farming have been at all-time highs. Some would argue that these years of strong profitability provide a substantial cushion for row-crop producers. However, one must be careful to assume that these levels of profitability will be sustained over the long-term.

While four of the largest budgeted returns have occurred in the last 5 years, the magnitude of the changes in budgeted earnings is striking. For instance the expected earnings swung from a

budgeted loss in excess of \$50 per acre in 2006 to a budgeted profit in excess of \$150 per acre in 2007. They then climbed to over \$250 per acre in 2008 and fell dramatically to a budgeted loss in 2009. Swings in the profitability of farming of this magnitude are unprecedented in the last 20 years. This makes developing sound risk management strategies a critical job of the farm manager.

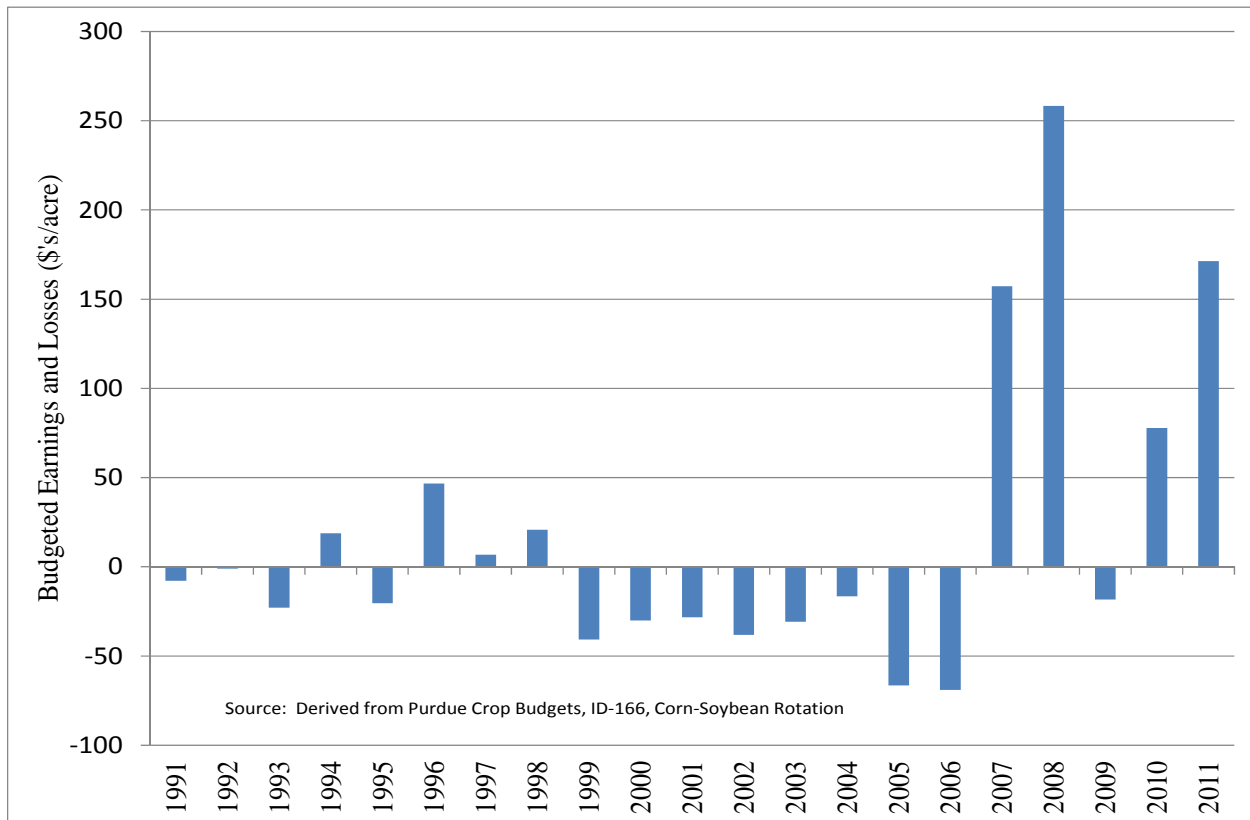


Figure 1. Budgeted Profit and Loss for a Corn-Soybean Rotation on High Quality Indiana Farmland, 1991-2011 (\$'s/acre).

What about the financial risk? Financial risk arises when farm businesses use debt to fund their operations. Because debt must be repaid, this creates a risk that operating receipts will not be sufficient to fund the costs of debt (interest costs) and meet principal repayment obligations. There are two key factors that influence financial risk, the overall level of debt that the farm utilizes and the price/cost of the debt (the interest rate). A combination of reduced debt utilization for many farm businesses and historically low interest rates has resulted in much lower financial risk for farming operations than in the past.

So even though operating risk has increased, the total risk from operations and financing faced by farm businesses has not been magnified or compounded by high debt loads and interest rates, as for example occurred during the 1980s. But one should again be cautious. Interest rates currently are seductively low, and some farmers have a significant proportion of their debt on variable rate terms. Thus when interest rates increase, the cost of funds and financial risk will increase as well. Some farmers have been aggressive in expanding their businesses in the past decade using historically low cost debt funds, so industry average debt loads may understate the leverage position of those who have rapidly grown their farming business in recent years. This is

particularly the case for younger farmers and farms with sales over \$1 million as documented in a recent study by the Kansas City Federal Reserve Bank.¹

The “bottom line” is clear however – even for those farmers who have not used leverage and debt capital extensively, the total operating and financial risk has increased in recent years. But what about the returns – have farmers been rewarded for these increased risks by the potential of higher returns in grain farming? The evidence favors the answer of “yes” to this question. At the aggregate level, net farm income is more volatile than in the past as illustrated in Figure 2, but the average for the past 8-10 years appears to be higher than in the previous decade. Margins per acre in recent times appear to also exhibit more volatility but higher levels in general as reflected in Figure 1. So there is at least some evidence that rewards in the form of higher potential returns are available to compensate for the additional risk in the grain farming sector. But the volatility in these returns or margins as illustrated in Figures 1 and 2 present an important implication – these higher returns are clearly not guaranteed and it is critical to implement strategies to capture higher returns when they are available, because history has shown that higher returns can be fleeting.

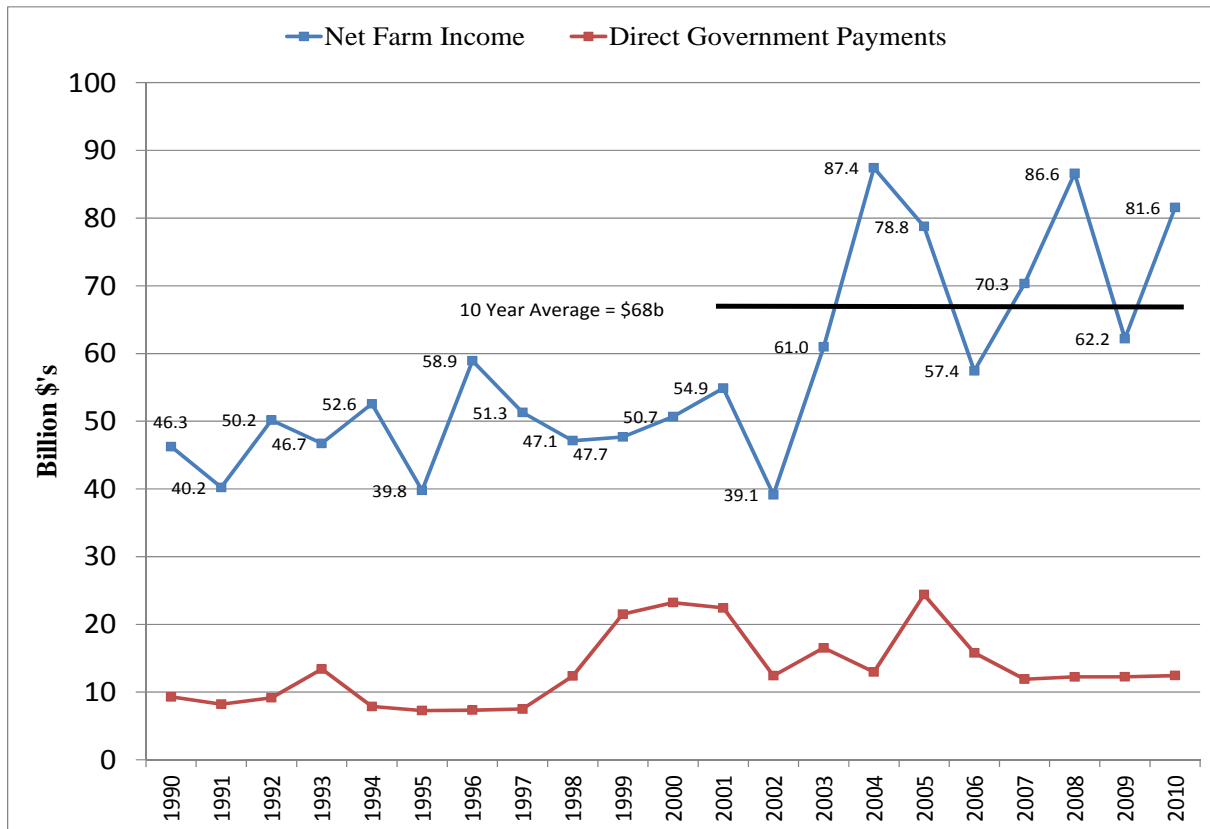


Figure 2. Aggregate Net Farm Income and Direct Government Payments, United States, 1990-2010.

¹ Briggeman, B.C. “Debt, Income and Farm Financial Stress.” The Main Street Economist, Federal Reserve Bank of Kansas City, Issue VI, 2010. Available at: http://www.kansascityfed.org/publicat/mse/mse_0610.pdf

Strategic Implications

So what are the implications for a farmer's strategy today? We propose eight practical strategies that can be used to protect current margins and successfully position your business against the extreme uncertainty present in today's agricultural marketplace.

1. Lock in margins – Figure 1 clearly indicates that the expected margins for corn/soybean production are positive and near all-time highs. In fact, it shows that expected margins have only been this large once in the last 20 years. These margins can be protected by using futures markets or contracting to lock in selling prices and contracting input prices for fertilizer, seed and chemicals.
2. Buy crop insurance – Locking in product and input prices manages two of the important determinants of operating risk in crop production, but what about the third critical source of risk – yield? Using recommended fertilizer, seed and pest control strategies can help reduce yield variability and should be standard practice, but the best strategy is likely to purchase crop insurance that will indemnify against reduced yield and even low prices if gross revenue insurance is purchased. Two brief comments concerning crop insurance – first the increased cost of purchased inputs suggests that higher levels of crop insurance coverage (80 to 85%) may be required just to cover the cost of variable inputs. This higher coverage comes at a cost, but one way to reduce this cost is to choose “enterprise” coverage which can substantially reduce insurance rates. Second, buying crop insurance is also beneficial in support of the strategy of locking in margins. One reason farmers frequently give for not forward pricing their crop sales is because they do not know what weather conditions will be and thus don't know their crop yields. Purchasing crop insurance provides some “yield protection”, so they can have a higher comfort level in locking in prices and margins for that level of “protected yield”.
3. Fix interest rates on some long-term debt – Interest rates have been in a long downward trend during the past 20 years as suggested in Figure 3, and they are at uniquely low rates at the current time.

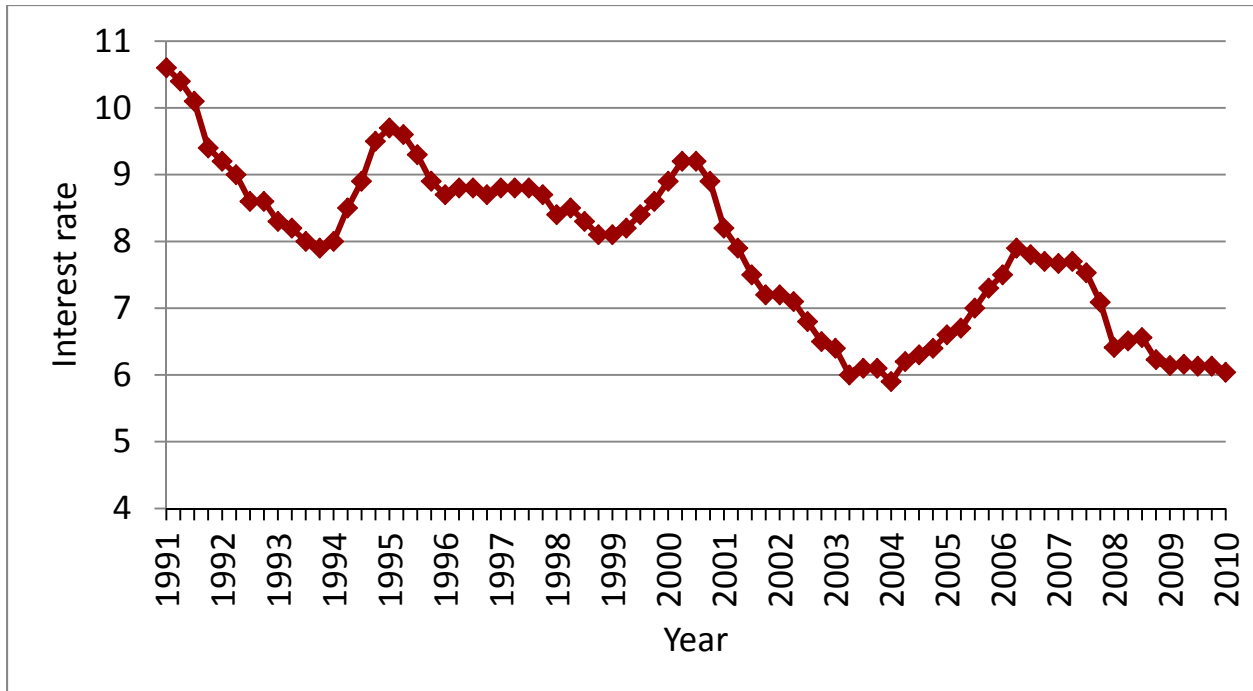


Figure 3. Interest Rates on Real Estate Loans, Chicago Federal Reserve Bank, 1991-2010.

While longer term interest rates are low, short-term rates are also very low, so fixing interest rates will involve cost. The shape of the yield curve is an indicator of the cost of moving from variable to fixed rates. Figure 4 shows the yield curve for U.S. Treasury securities on January 1 for the last 5 years. This curve clearly shows the low short-term interest rates of recent times. It also illustrates that rates currently rise as the maturity of the securities increases.

When compared to many previous time periods, the cost of moving from short-term to longer-term rates is high. For instance, in 2007 the Treasury would have paid roughly the same rate for borrowing on a 5-year fixed rate as on a 3-month fixed rate. In 2011, fixing rates for 5 years would cost an additional 200 basis points (2 percent) over the 3-month rate. While this may seem like a large premium to fix rates, one must also consider the overall magnitude of the rates. From the Treasury’s perspective the interest rate on 5-year debt is currently quite low (2 percent) relative to many other periods in history. When the cost of shifting to longer term rates was low such as in 2007, the benefit was also low because the 5-year rate was relatively high. That is not the case today. In fact, the forward 3-month LIBOR rate market shown in Figure 5 indicates that market participants expect short-term interest rates to rise in the future. While it is difficult to predict interest rates, one should ask whether having your entire “portfolio” of debt on variable rates is a sound risk management strategy. Instead, it might be prudent to diversify by changing some variable rate debt to fixed rates.

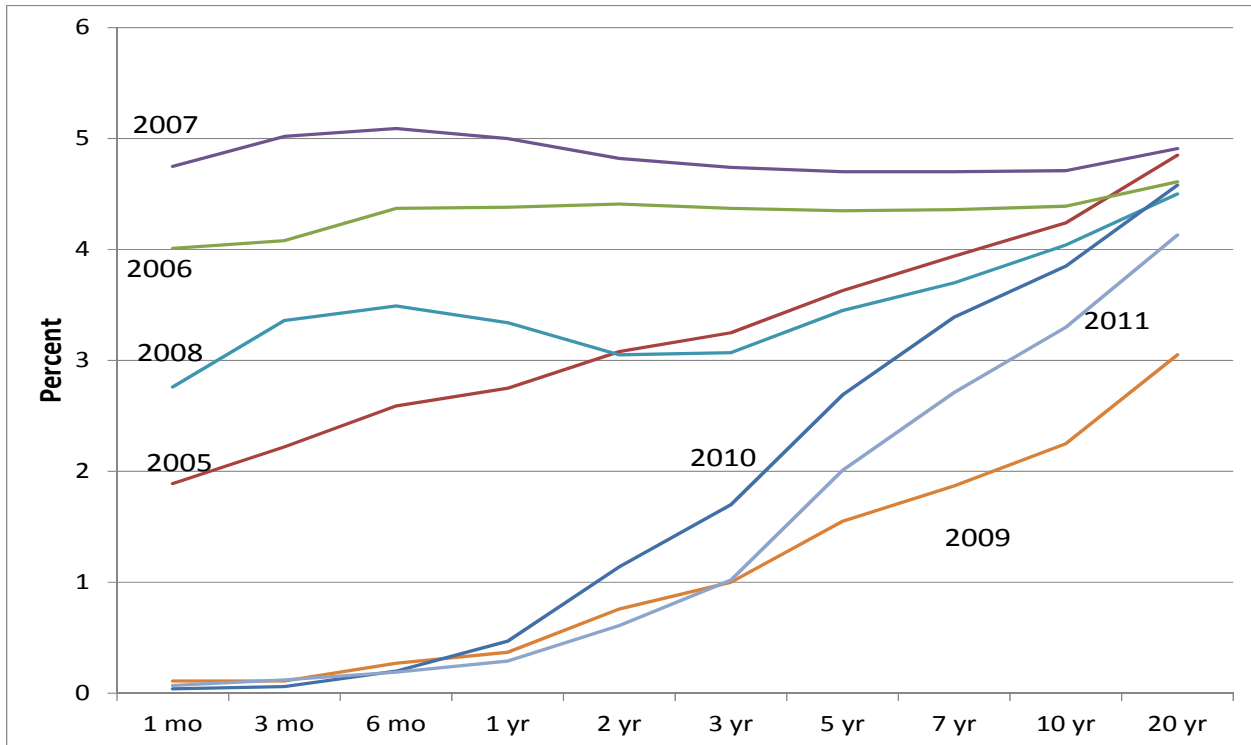


Figure 4. The Yield Curve for U.S. Treasury Securities on January 1st for years 2005 to 2011.

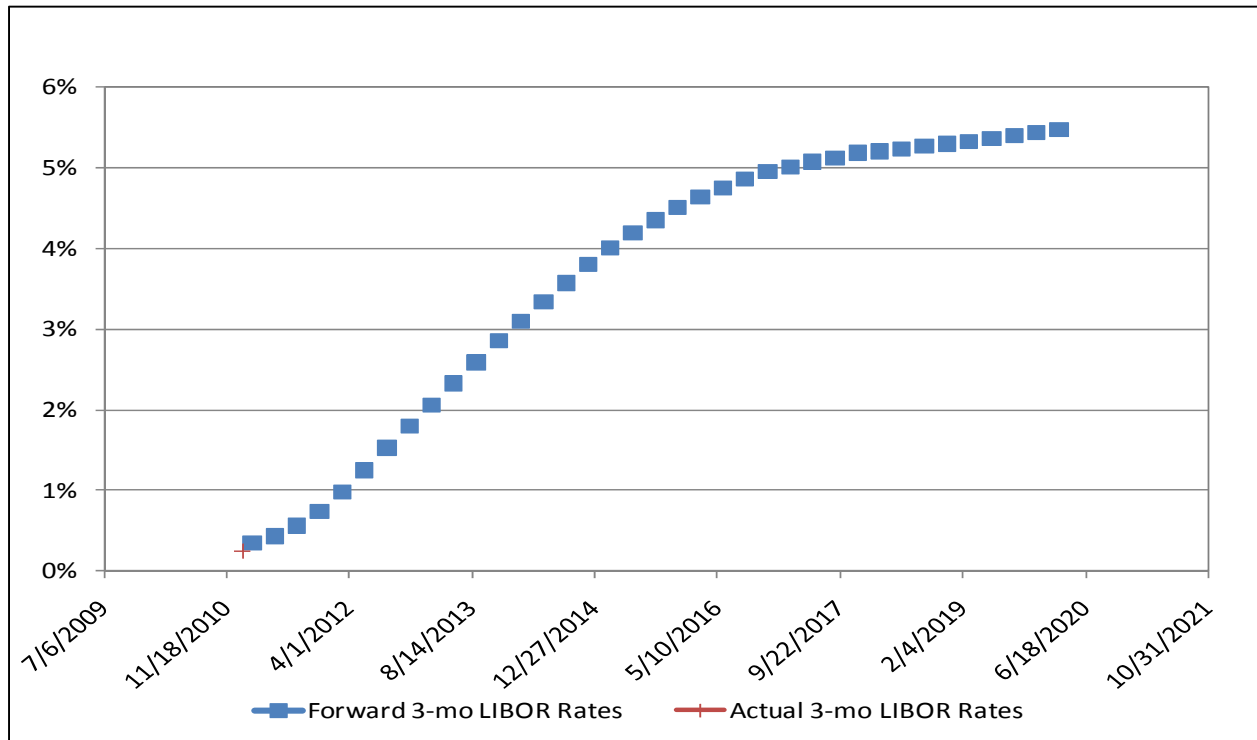


Figure 5. Forward 3-Month LIBOR Rates, January 21, 2011.

4. Deleverage (pay down debt) – Expected crop returns are near recent highs, and using some of these earnings to reduce the level of debt in the operation will reduce financial risk and offset some of the increased operational risk. Paying down debt with excess cash flow can be a very sound risk management strategy. The current yield curve combined with futures markets indications of future interest rates suggests that after 5 years, interest rates will be much higher than they are today. For those firms that have grown aggressively and have used increasingly lower cost debt to finance that aggressive growth, the prospects of higher interest costs suggests that it may be difficult to safely use aggressive amounts of debt capital in the future. Consequently, with strong current cash flows more highly leveraged firms should consider de-leveraging their operation over the next few years.

From the perspective of managing the short and long-term financial risk of the farm business, this is a very unique time. The current yield curve allows farmers to lock in relatively low interest rates for the next five years. Current prices for commodities allow farmers to lock in high margins for at least the next year or two. And these high margins can be used to pay down debt so that if margins are lower and financing cost higher in future years, as is highly likely, the financial risk to the business is reduced substantially.

5. Hold financial reserves – In periods of high margin volatility, the first line of defense against financial stress is financial reserves. More working capital, higher cash or liquidity positions, and reduced current debt obligations provide a greater financial cushion to buffer against the potential for financial reversals resulting from higher cost, lower prices, lower yields, or higher interest rates.
6. Conservative buying/bidding – The current high margins encourage aggressive buying and bidding behavior. Producers should be cautious in their bidding for farmland purchases and cash rents in particular. This is particularly true when offers are made that carry implications several years into the future, such as long term-cash lease obligations or land purchases. As indicated earlier, history suggests that margins in the future are more likely to be lower than higher, and one must be careful to not suffer “bidders remorse” or “the winners curse” from over-bidding in the land purchase or rental market.
7. Slow growth/fund with equity – The increased risk present in the marketplace suggests that capital costs will be higher in the future. This means that growth will be funded by higher cost capital. Consequently, farmers who have been encouraged to grow relatively rapidly because of a low and declining cost of capital may want to alter their growth strategy. Growth in the future with higher capital costs should likely be slower than in the past, be focused on acquiring assets more through rental arrangements and less through ownership, and should be funded with less debt and more equity.
8. Invest in operational excellence and cost control – One of the best strategies that farmers can use to protect against unexpected price swings is to establish a business with a low cost of production. Focusing on driving unnecessary costs from the operation and exercising cost discipline are critical to executing this strategy. At present, returns are high and there is a natural tendency to relax cost control and management strategies when profits are strong. Making prudent capital investment and employment decisions that

increase efficiency and lower costs are good investments. Unnecessary, luxury, convenience, or tax motivated purchases may turn out to be a costly use of financial reserves and can adversely impact your cost structure should margins swing for the worse.